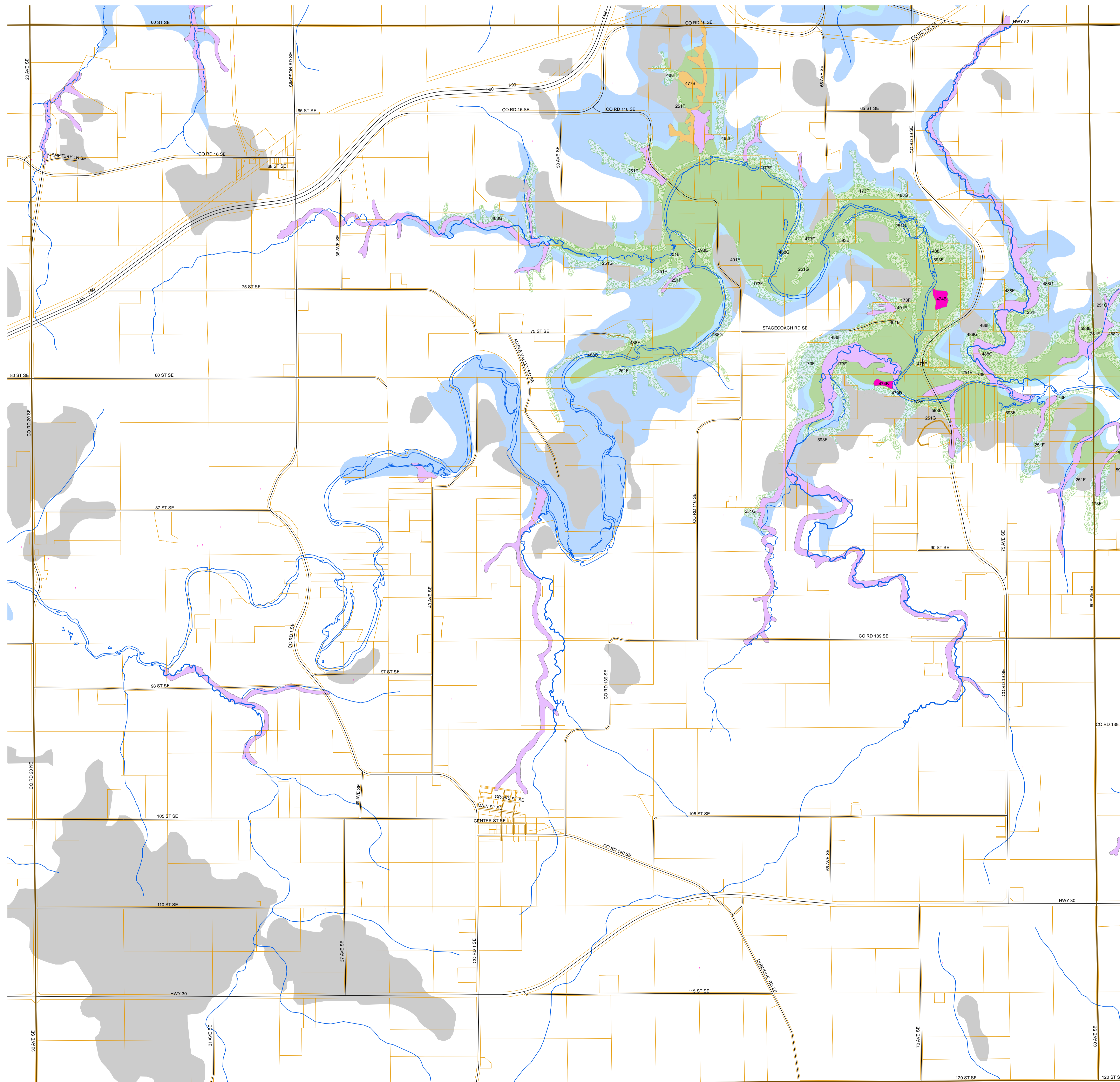


# Decorah Edge Features

The Decorah Edge occurs where the Decorah, Platteville, or Glenwood is the first encountered bedrock, AND depth to bedrock is less than 25 feet, AND where the Decorah abuts the Cummingsville. Areas where the Decorah is isolated from the Cummingsville are not subject to the Decorah Edge regulations.

The map is derived from the "Bedrock Geology: Steele, Dodge, Olmsted and Winona Counties" data plate produced by the Minnesota Geological Survey, University of Minnesota in 2004; and from the Olmsted County Soil Survey published by the US Soil Conservation Service in 1978. Soils listed in the legend may contain groundwater supported wetlands or "edge support areas" and may be subject to requirements for special protection if included in non-farm development.

## Pleasant Grove Township



### Decorah Edge Features

- 471 Root
- 474B abuts Edge
- 477B abuts Edge
- 528B/ODPG <25'
- Shullsburg abuts Edge
- slope > 18 abuts Edge
- Depth to Bedrock > 25
- D-P-G abuts Cummingsville
- Parcel Boundaries
- 165' Area
- Cummingsville
- Known Springs
- Isolated Decorah

