

A wide-angle photograph of the Zumbro River. The river flows from the foreground towards the background, where it is shrouded in a light mist. The banks are lined with dense green trees and vegetation. Patches of green grass and small plants are visible in the shallow water. The sky is overcast and grey.

Zumbro River One Watershed, One Plan

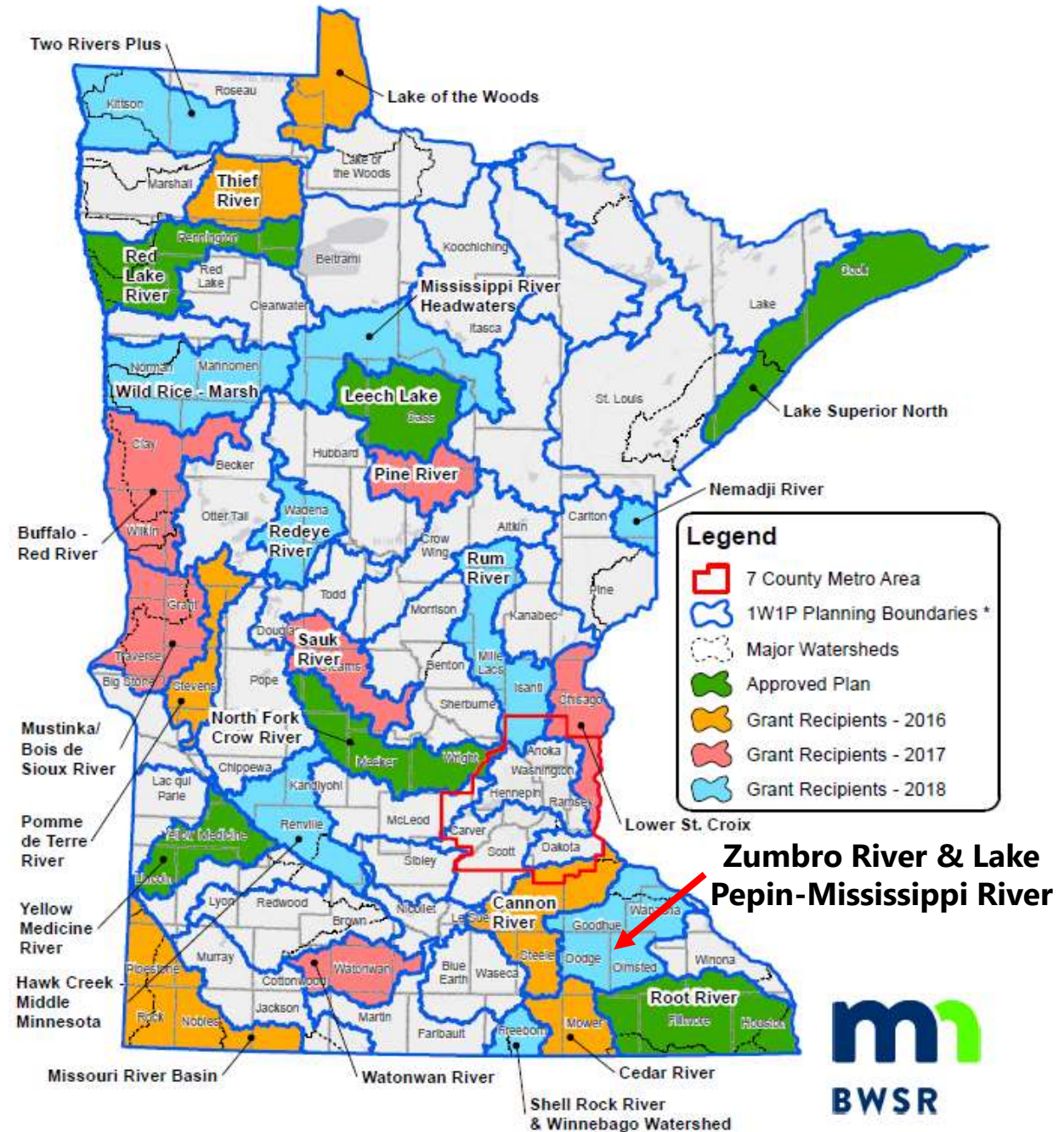
June 13, 2019 Public Kickoff Meeting

Zumbro River One Watershed One Plan Partnership & Barr Engineering Co.

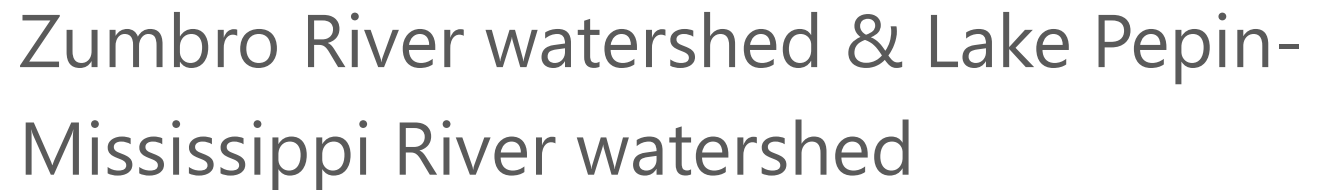
What is one watershed, one plan (1W1P)?

- State initiative to create watershed-wide, science-based approach to resource management
- Resulting Plan document will guide Partner actions over a 10-year period
- Build off local government expertise, services, and capacity
- Solicit input from agencies, local government, citizens, and stakeholder groups
- Focus on implementation of prioritized, targeted, and measurable actions

What is one watershed, one plan (1W1P)?



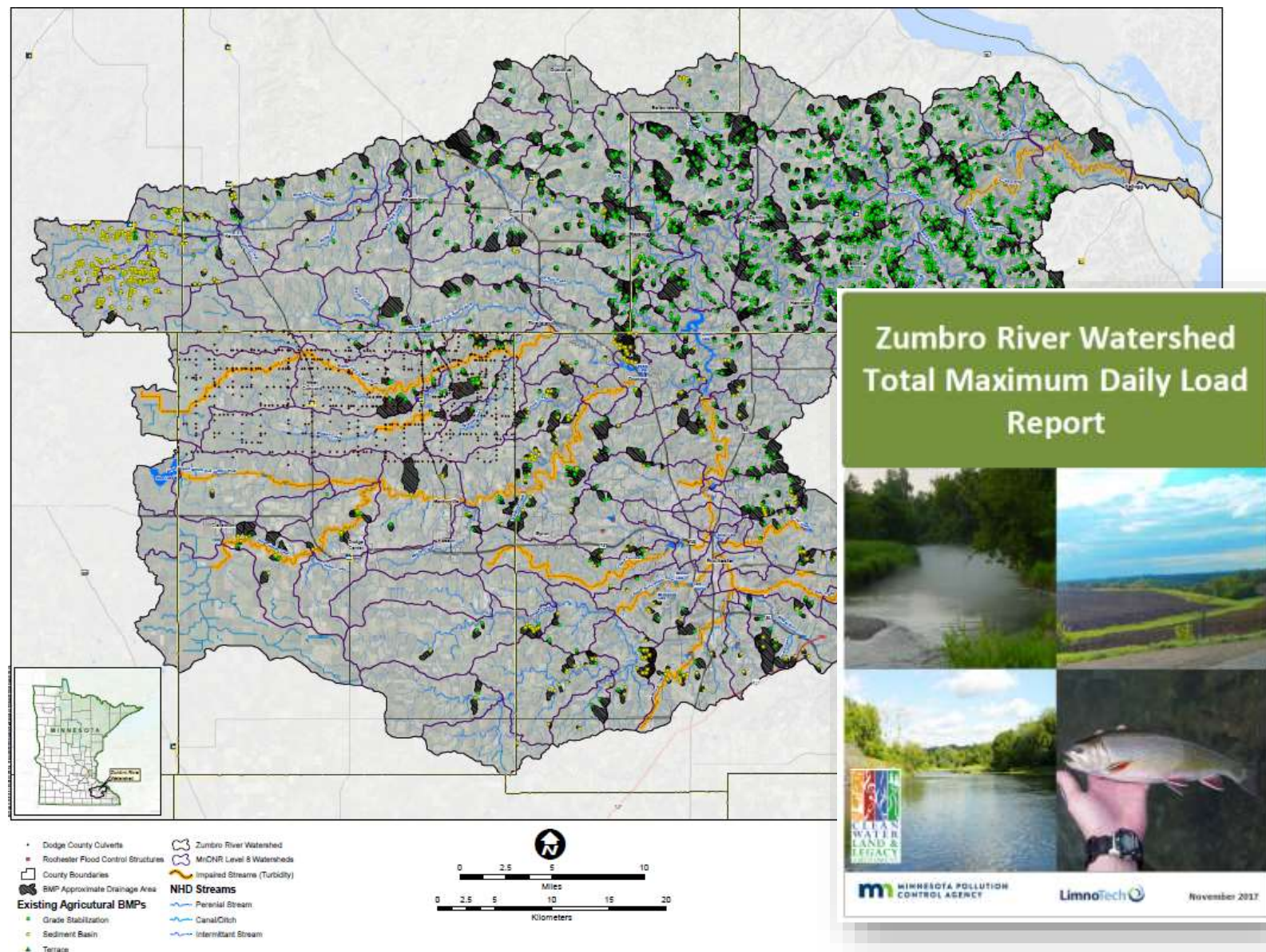
*Not legal boundaries; intended for planning purposes through One Watershed, One Plan only.



Zumbro 1W1P Study Area

- Zumbro River watershed
 - 1,421 square miles (over 1 million acres)
 - 5 major subwatersheds: Zumbro River, North Fork, South Fork, Middle Fork, South Branch Middle Fork
 - Rice Lake, Lake Zumbro
 - City of Rochester, Bear Valley Watershed District
- Lake Pepin-Mississippi River subwatershed
 - 233 square miles
 - 3 major subwatersheds: Hay Creek, Wells Creek, Lake Pepin
 - Lake City, Red Wing

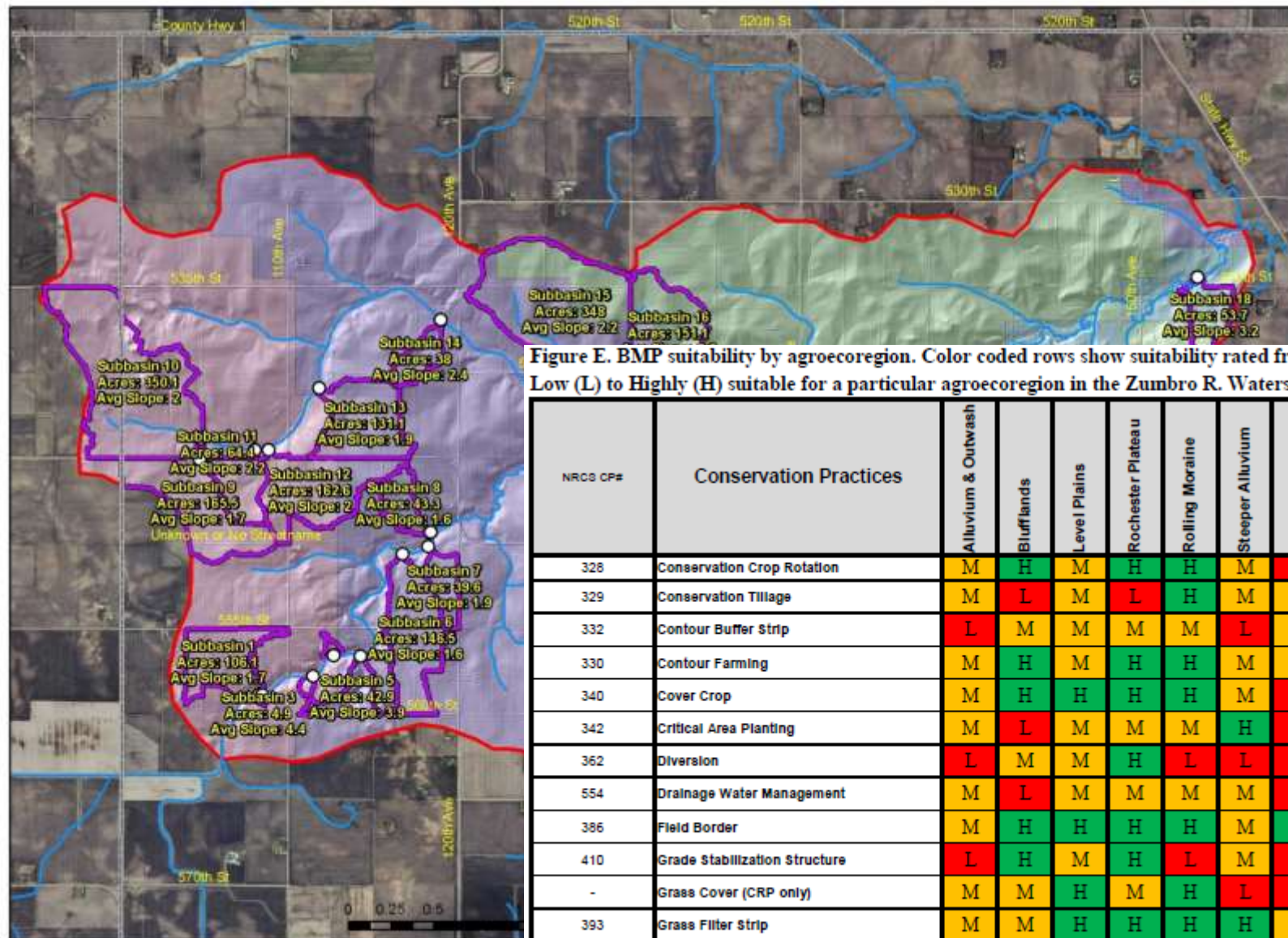
Zumbro 1W1P Study Area



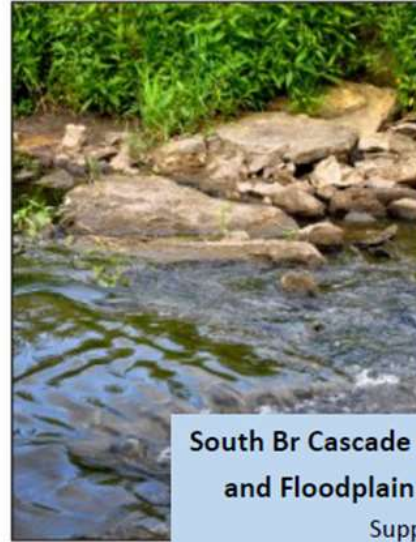
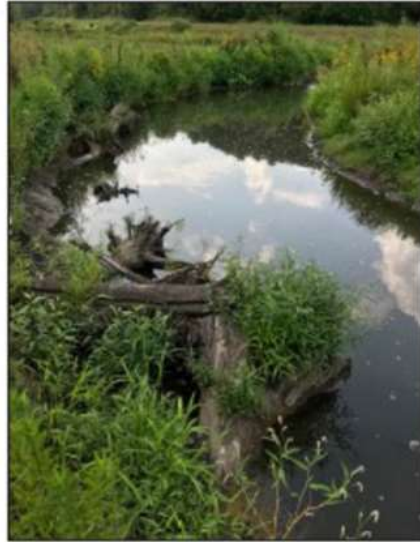
- Previous studies/projects provide good start

Zumbro 1W1P Study Area

Zumbro River Middle Fork headwaters near West Concord, Dodge Co.



Zumbro 1W1P Study Area

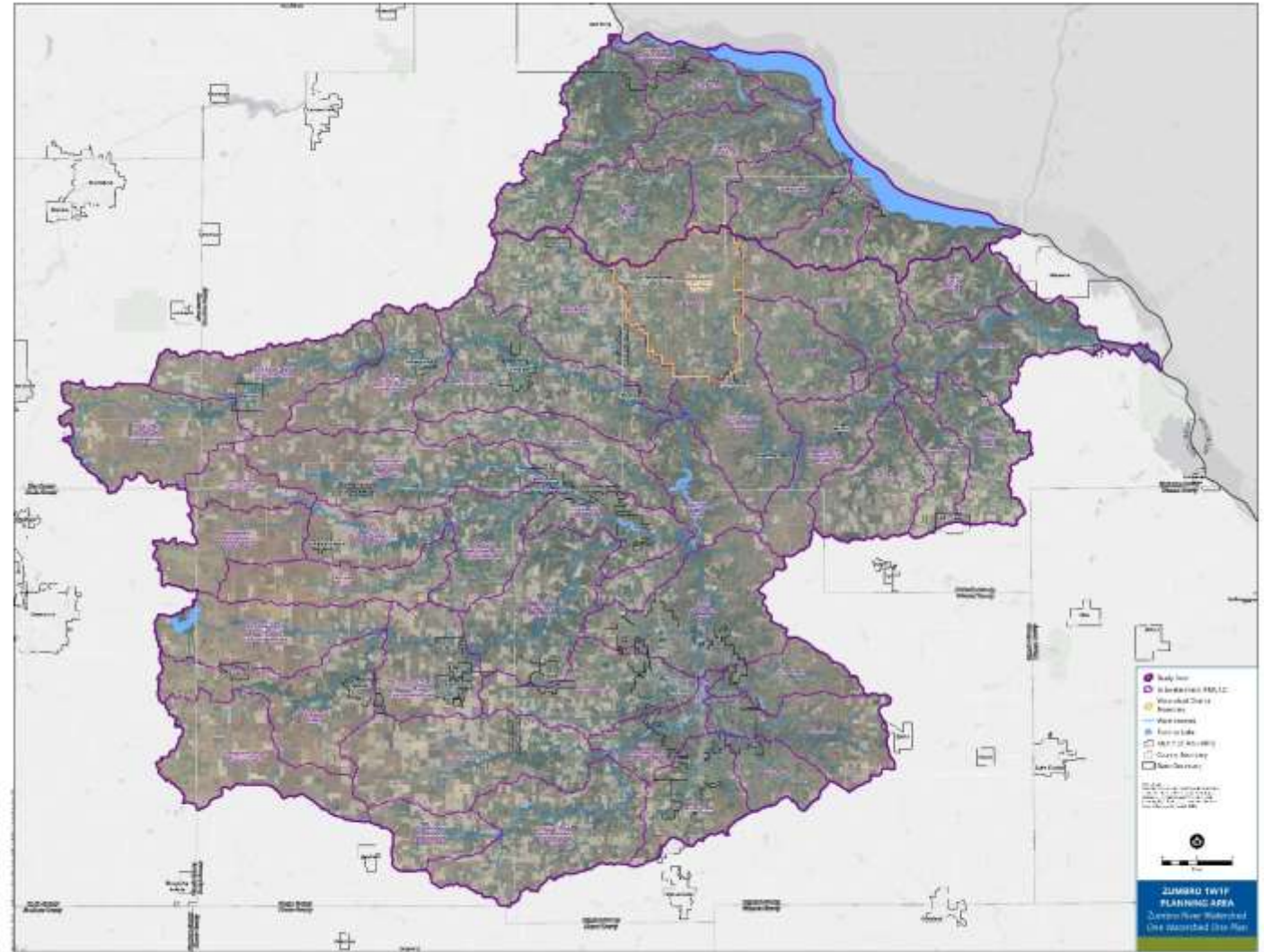


South Br Cascade Creek Stream Channel and Floodplain Restoration Project

Supported by:
Clean Water Funding
Conservation Partners Legacy Funding
Local Matching Funding

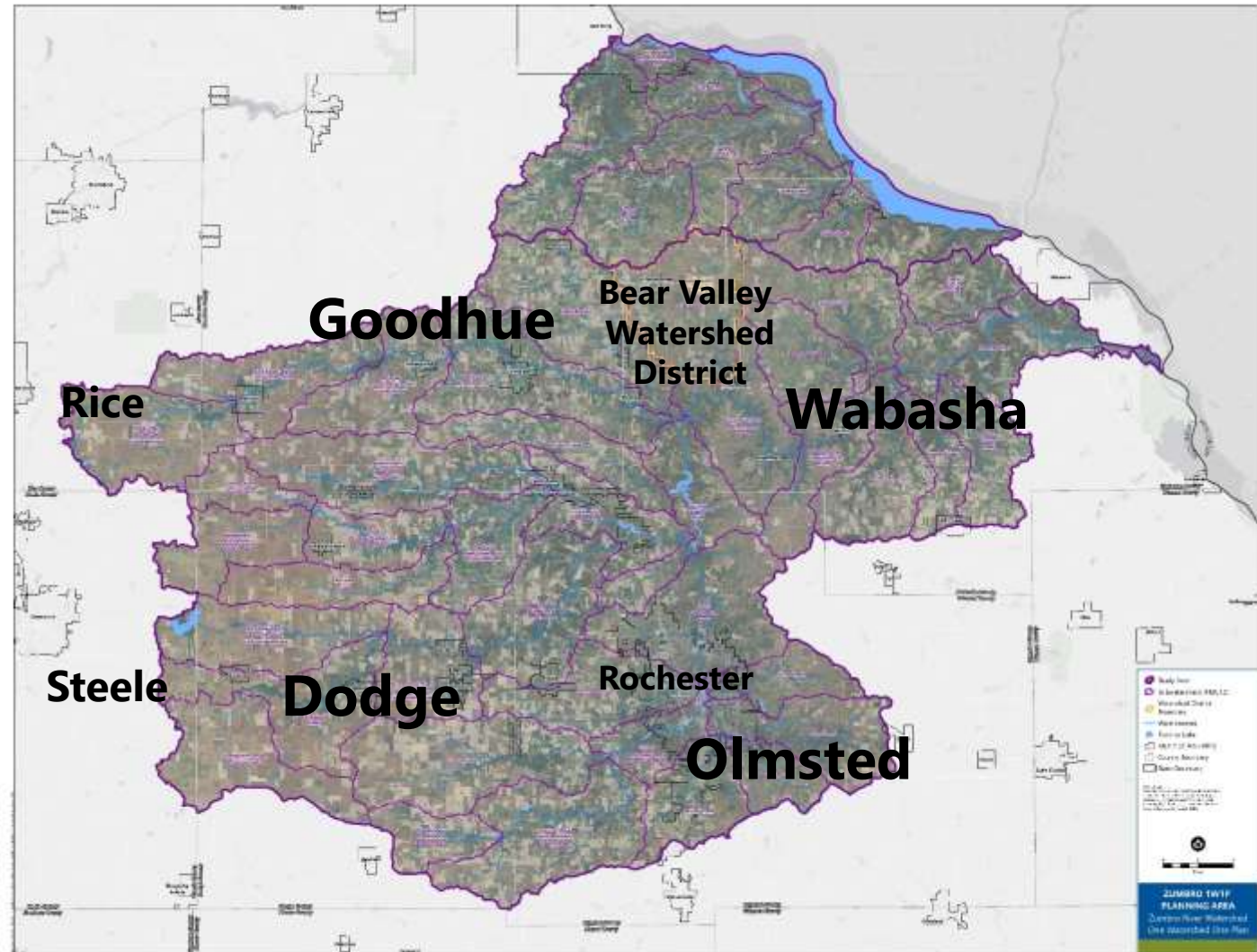


Who are the
Zumbro River
1W1P
Partnership
members?



Counties, Soil and Water Conservation Districts, Bear Valley Watershed District and City of Rochester

Who are the Zumbro River 1W1P Partnership members?



Counties, Soil and Water Conservation Districts,
Bear Valley Watershed District and City of Rochester

How a 1W1P Partnership operates

Planning Work Group

- (SWCD, County, City staff)

Advisory Committee

- Agency staff, stakeholder groups

Policy Committee

- Elected officials of Partners

Process for developing the Plan document



- Initial stakeholder engagement

- Review available watershed data

- Identify and prioritize issues

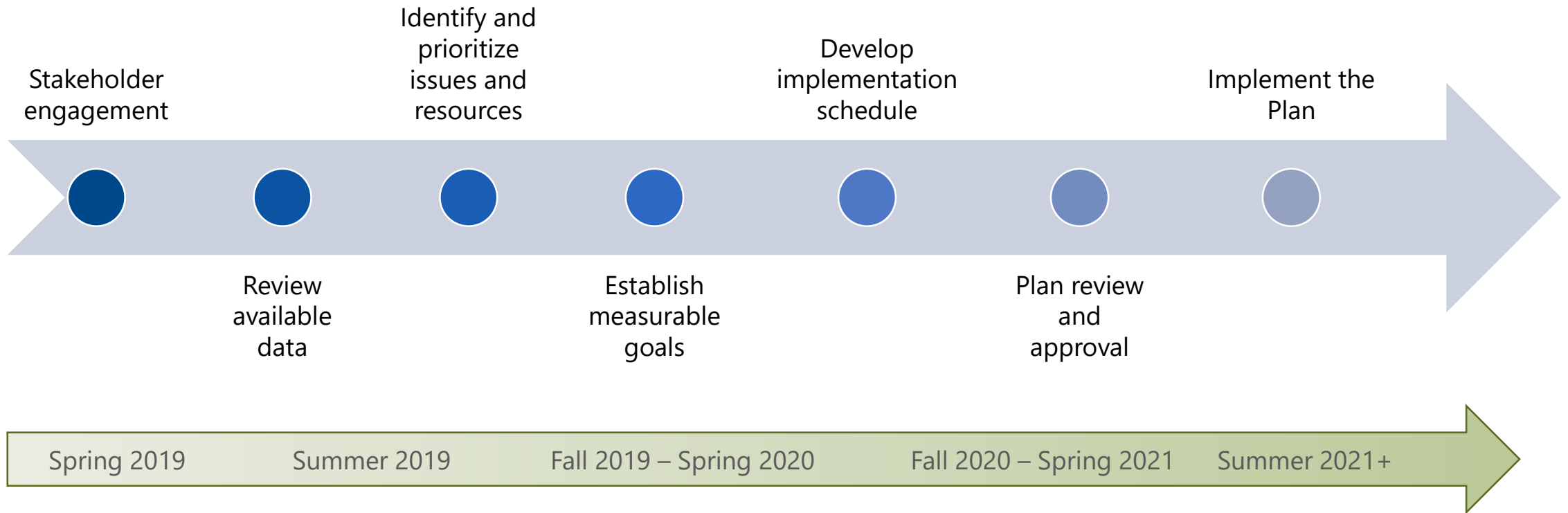
- Establish measurable goals

- Design an implementation program

- Review, revise, and adopt the Plan

- Implement the Plan

Project timeline



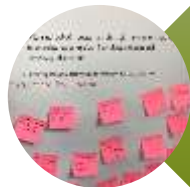
Stakeholder engagement during Plan development



Stakeholder engagement during Plan development



Agency responses to Plan notification letter



Resident survey



Kickoff meeting (You are here)



Waterside Chats

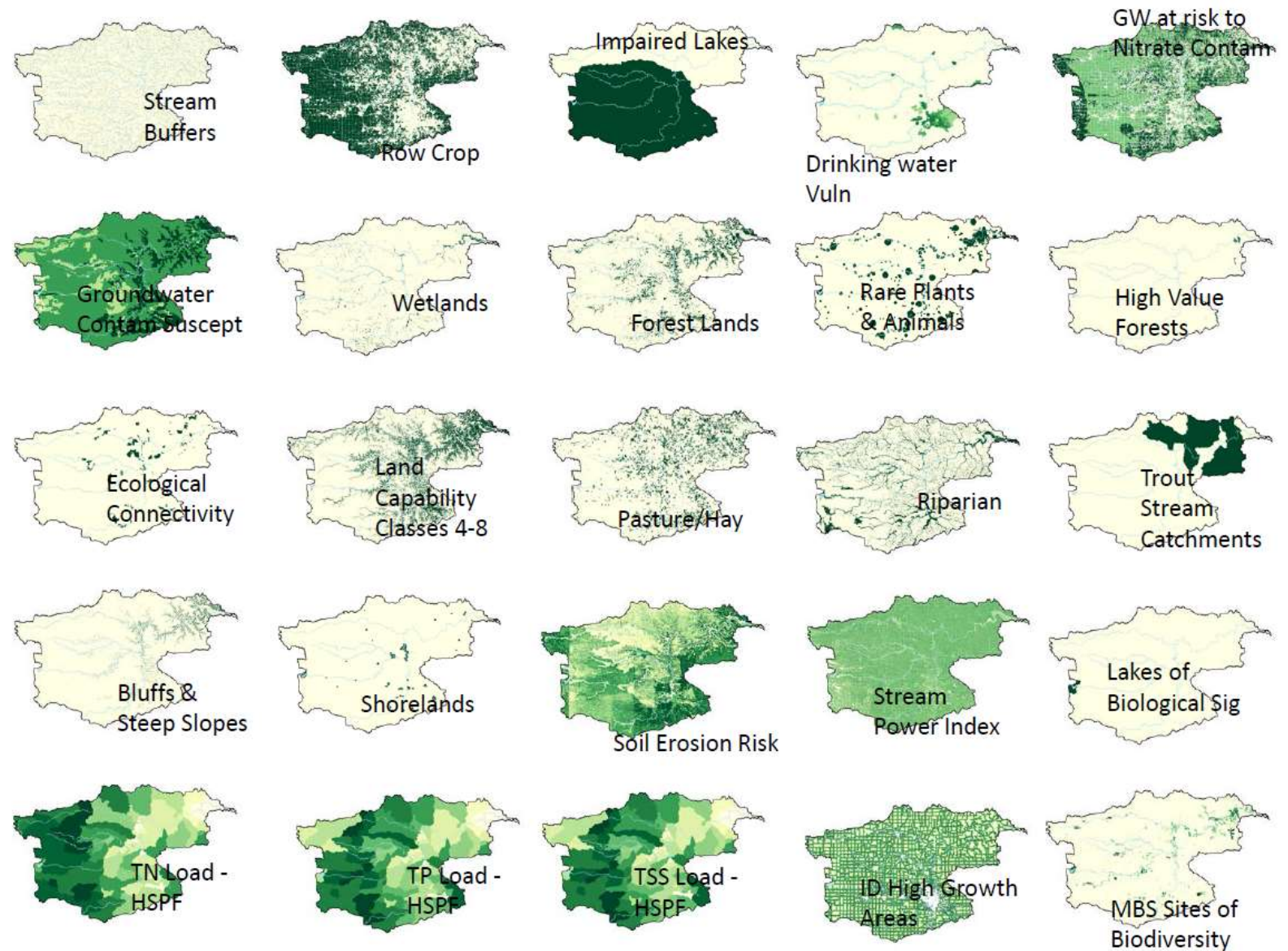


Review of stakeholder documents

Next steps: issue
and resource
identification,
prioritization

- Identify/prioritize issues and resources
- Consider stakeholder input
- Consider available data
 - Monitoring data
 - Water quality/quantity modeling
 - Geospatial data
- Balance concerns of all Partners

Next steps: issue identification and prioritization



example: MDNR Zonation process layers spatial data to identify areas of overlapping concerns

Next steps: issue
and resource
identification,
prioritization

- Examples of issues/concerns:
 - Bacteria impairments in the watershed limit recreational opportunities (MDNR, MPCA)
 - Altered hydrology contributes to increased peak flows and flooding (MDNR)
 - Prioritize drinking water supply management areas impacted by nitrate (MDH)
 - Maintain existing impoundments and identify new opportunities to reduce flooding and sediment loss (BVWD)

How to get involved

- Tonight:
 - Share your thoughts about the data presented
 - Complete the resident survey
 - Talk to us or leave us a note!
 - Add a dot/comment to the watershed map
 - Provide your contact info for future updates
- In the future:
 - Visit the Olmsted County webpage under “Zumbro 1W1P” for Plan updates
 - Visit us on Facebook @ Olmsted SWCD
 - Attend a Waterside Chat
 - Email us at: SWCD@co.olmsted.mn.us

questions?

