



Greater Zumbro One Watershed, One Plan

November 14 2019 – Waterside Chat in Lake City
Greater Zumbro 1W1P Partnership & Barr Engineering Co.

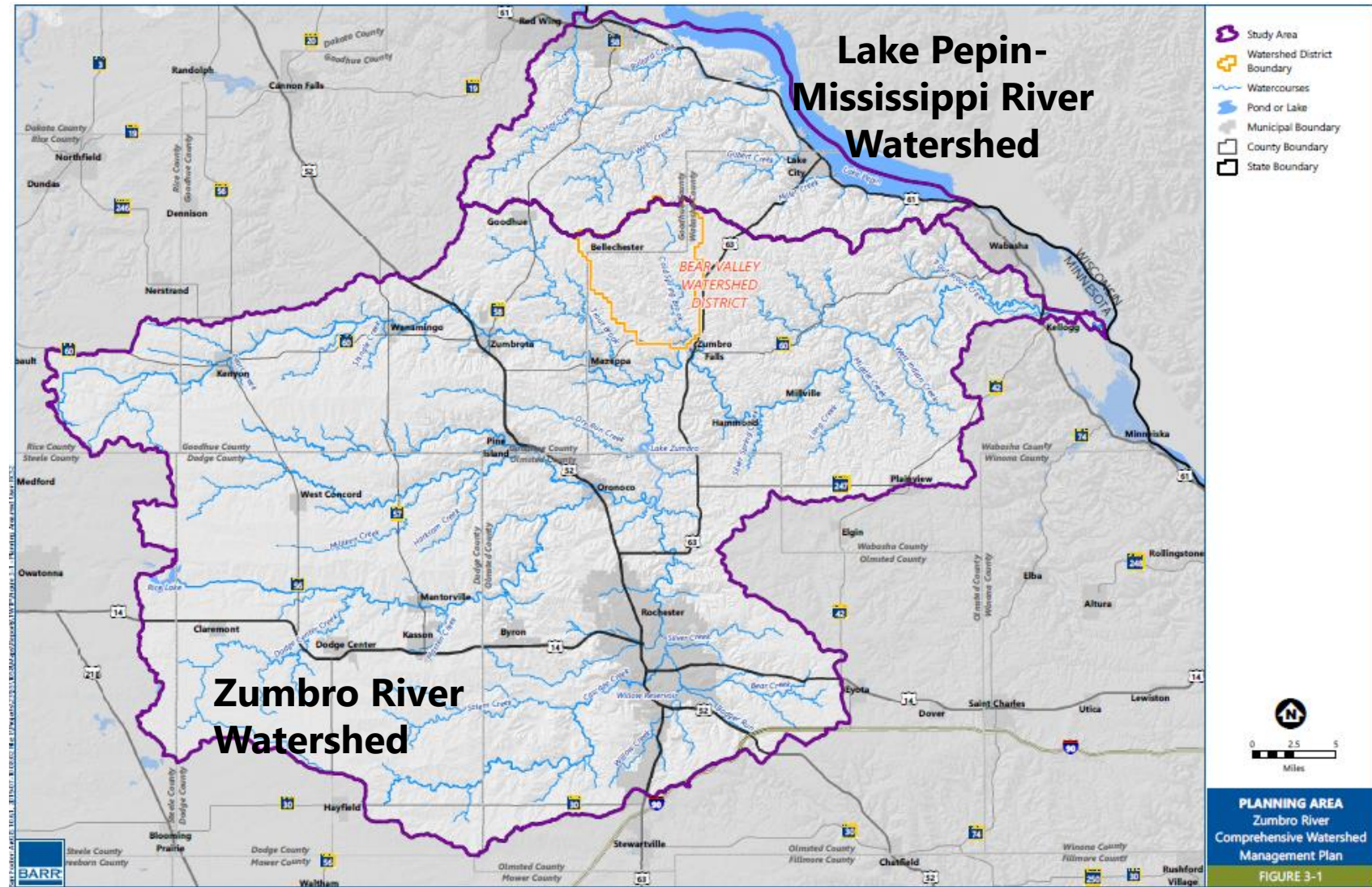
Agenda

- Introduction to One Watershed, One Plan
- Review resident survey results
- Review Partnership issue prioritization
- **Small group discussion of priority issues**
- Large group share-out of priority issues

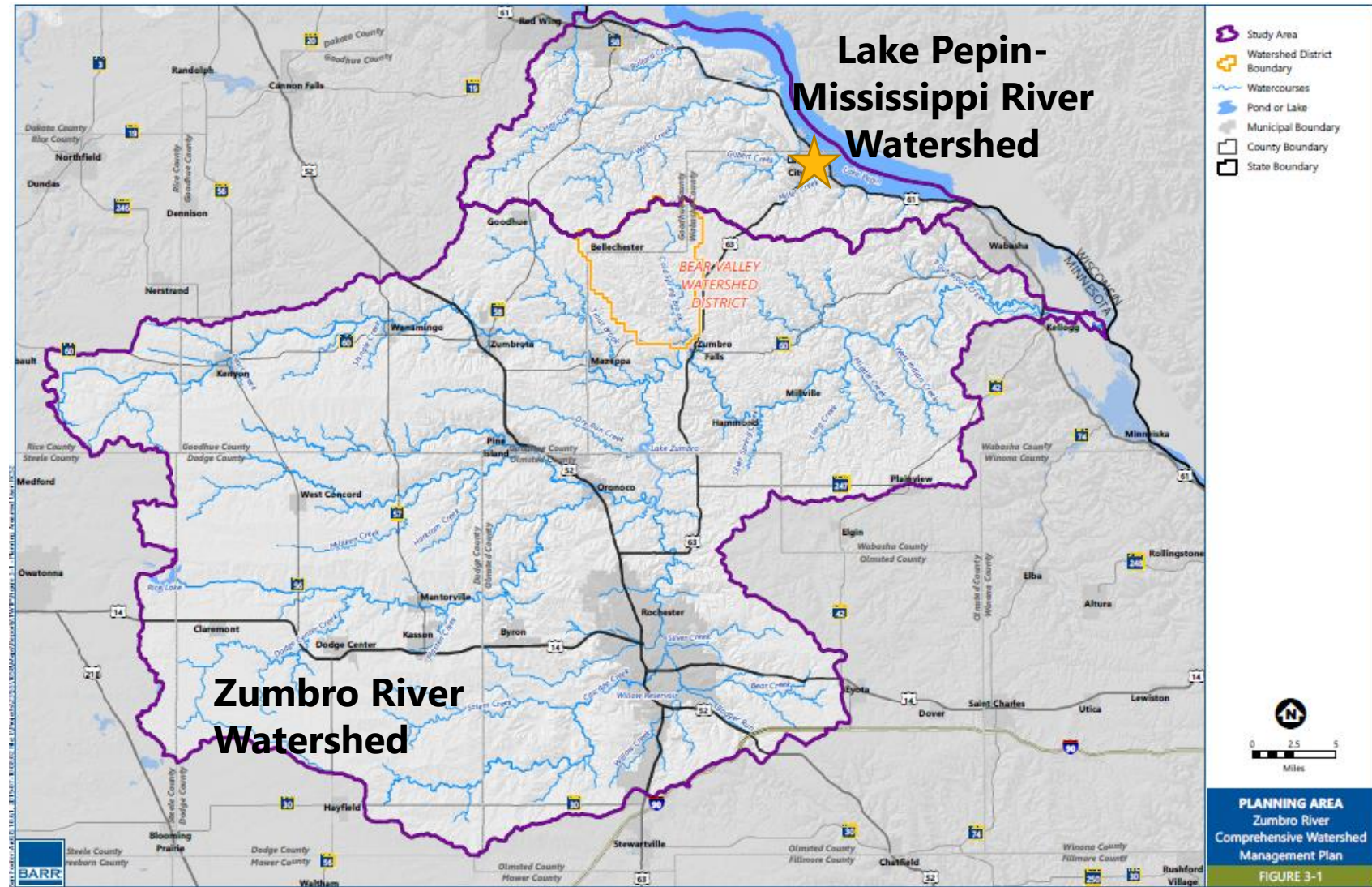
What is one watershed, one plan (1W1P)?

- State initiative to create watershed-wide, science-based approach to resource management
- Resulting Plan document will guide Partner actions over a 10-year period
- Build off local government expertise, services, and capacity
- Solicit input from agencies, local government, citizens, and stakeholder groups
- Focus on implementation of prioritized, targeted, and measurable actions

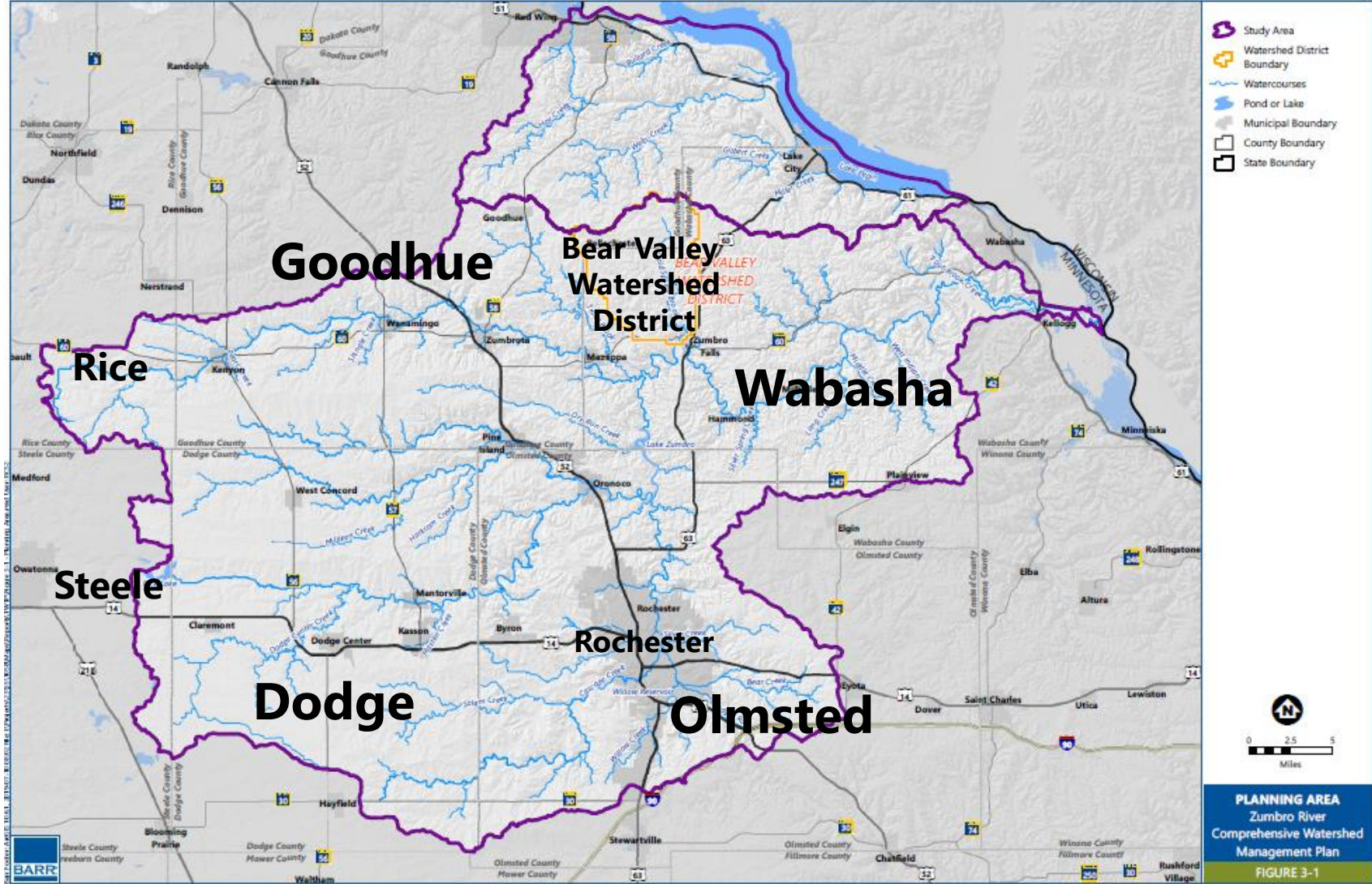
Greater Zumbro 1W1P planning area



Greater Zumbro 1W1P planning area



Greater Zumbro 1W1P Partnership members



How the Greater Zumbro 1W1P Partnership operates

Planning Work Group

- (SWCD, County, City staff)

Technical Advisory Group

- Agency staff

Policy Committee

- Elected/appointed officials of Partners

Process for developing the Plan document



- Public kickoff meeting

- Review available watershed data

- Identify and prioritize issues

- Establish measurable goals

- Design an implementation program

- Review, revise, and adopt the Plan

- Implement the Plan

Process for developing the Plan document



- Public kickoff meeting

- Review available watershed data

- Identify and prioritize issues

- Establish measurable goals

- Design an implementation program

- Review, revise, and adopt the Plan

- Implement the Plan

Stakeholder engagement during Plan development



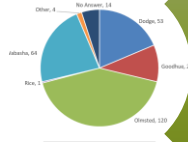
Stakeholder engagement during Plan development



Agency responses to Plan notification



Kickoff meeting



Resident survey



Waterside Chats



Future engagement/review opportunities

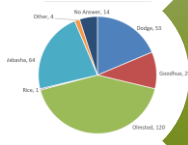
Stakeholder engagement during Plan development



Agency responses to Plan notification



Kickoff meeting



Resident survey



Waterside Chats



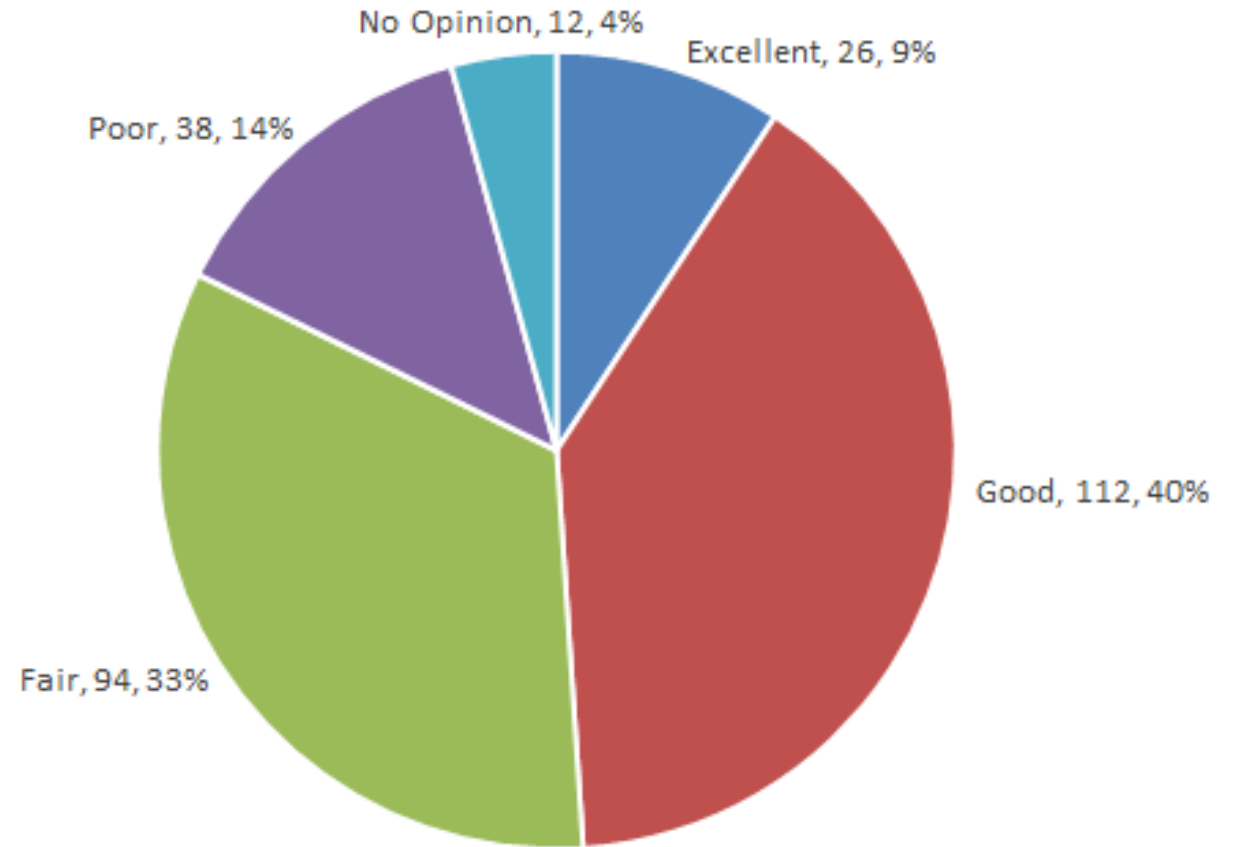
Future engagement/review opportunities

Resident survey results

- Approximately 300 watershed residents completed a brief survey
- Questions focused on:
 - Perceptions of water resource health
 - How residents use water and natural resources
 - The importance of various water and natural resource issues

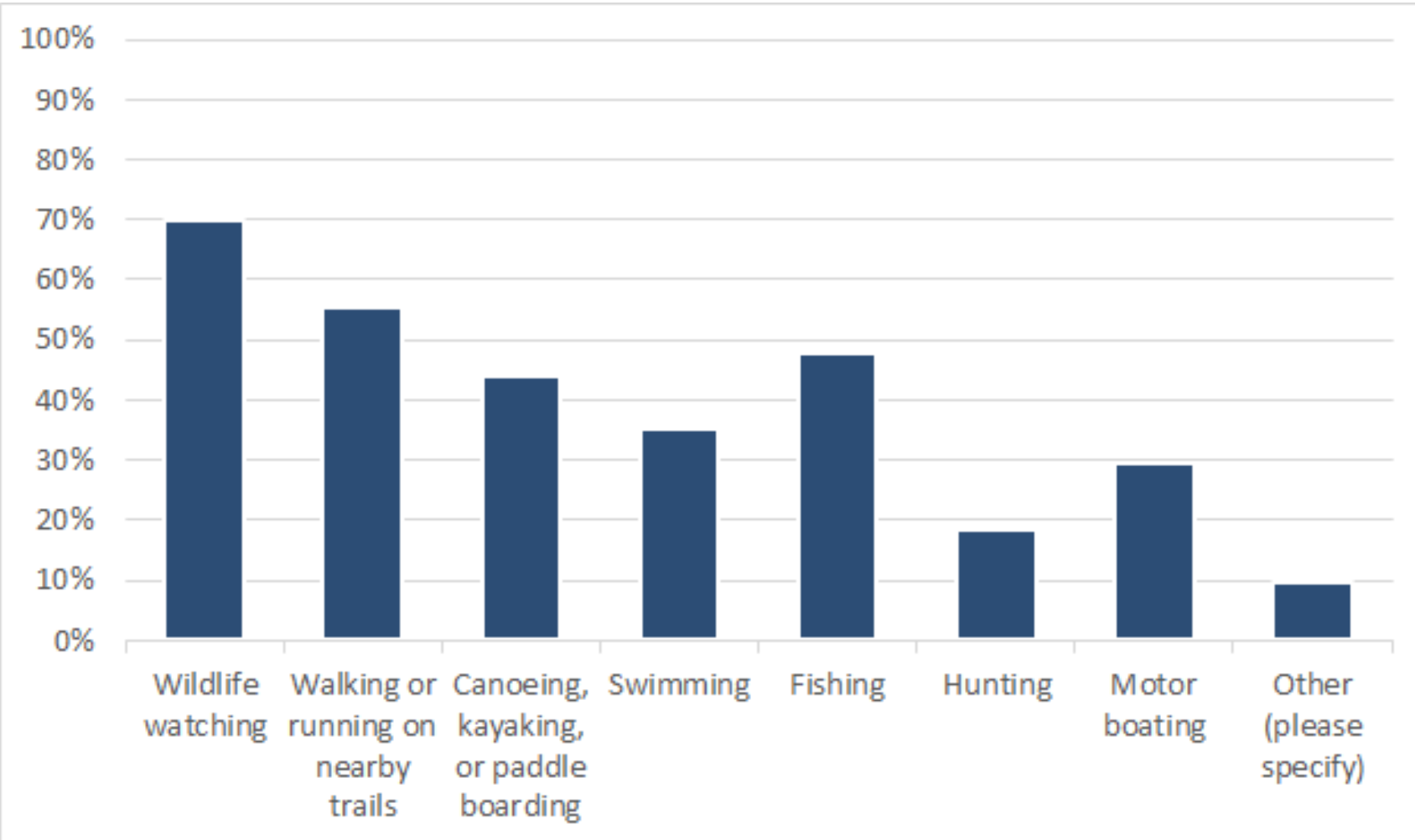
- How would you rate the overall health of water resources in your community?

Resident survey results



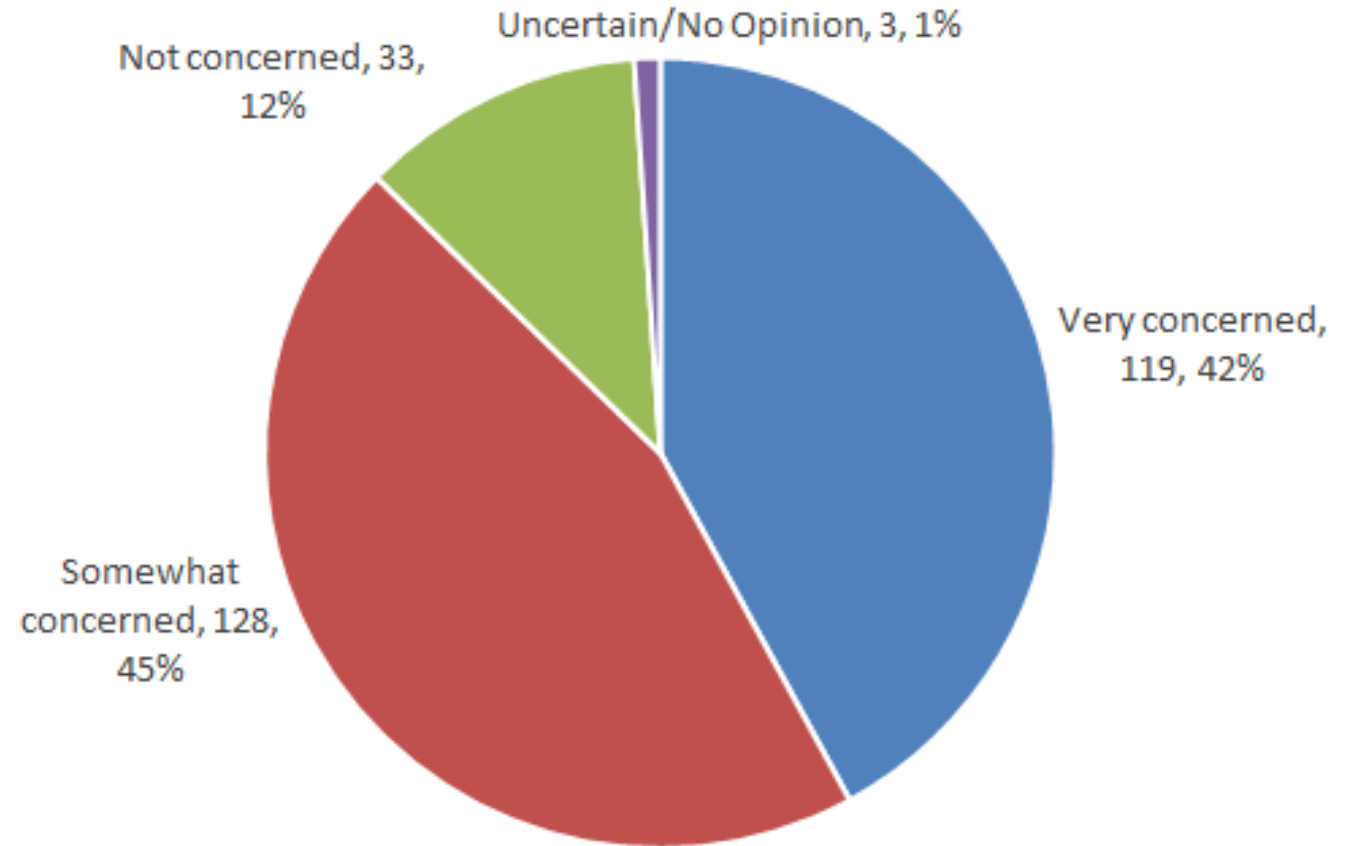
- How do you use the lakes, ponds, wetlands, streams, rivers, and natural areas in your community?

Resident survey results



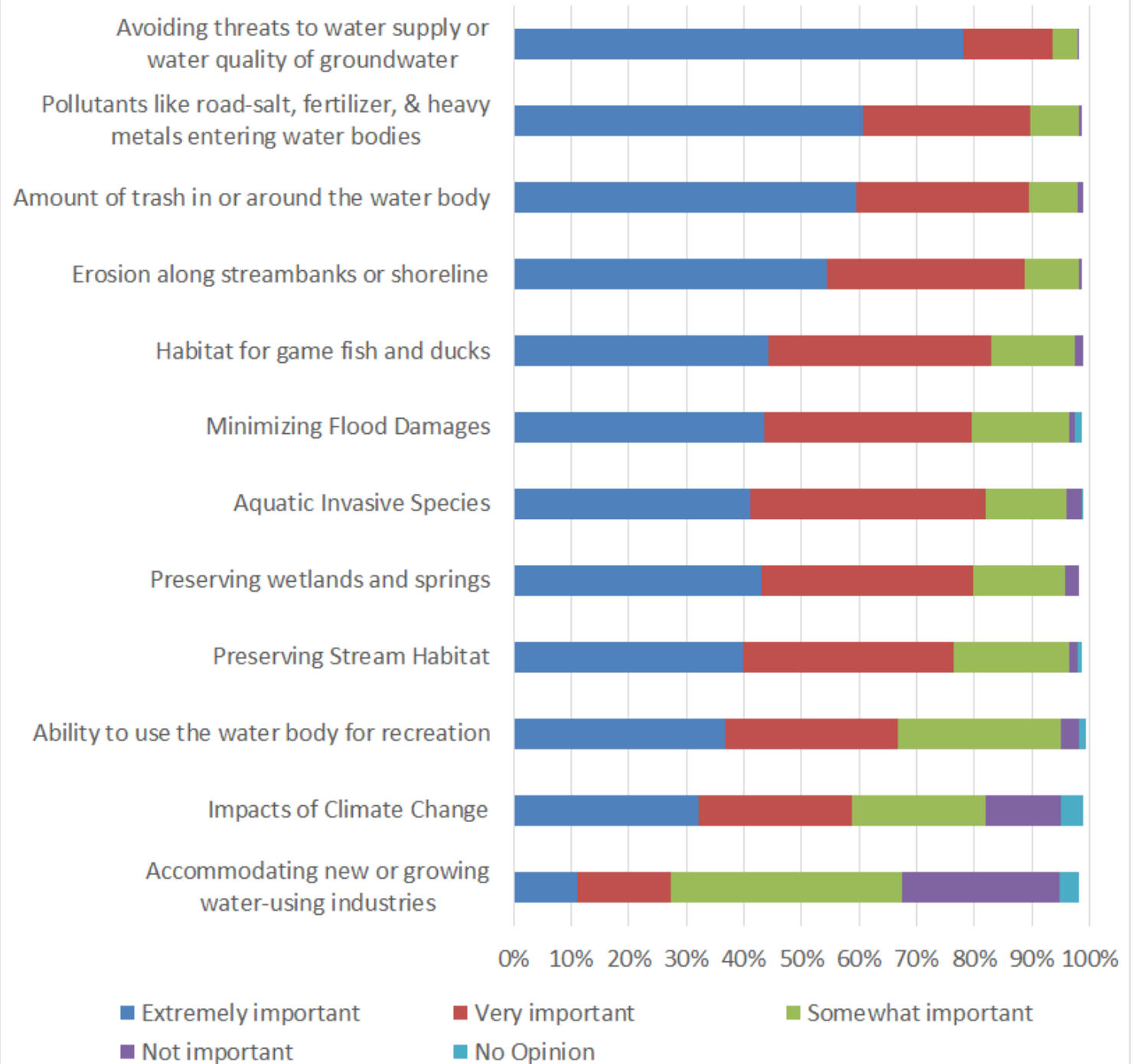
- How concerned are you about the state of local groundwater resources?

Resident survey results



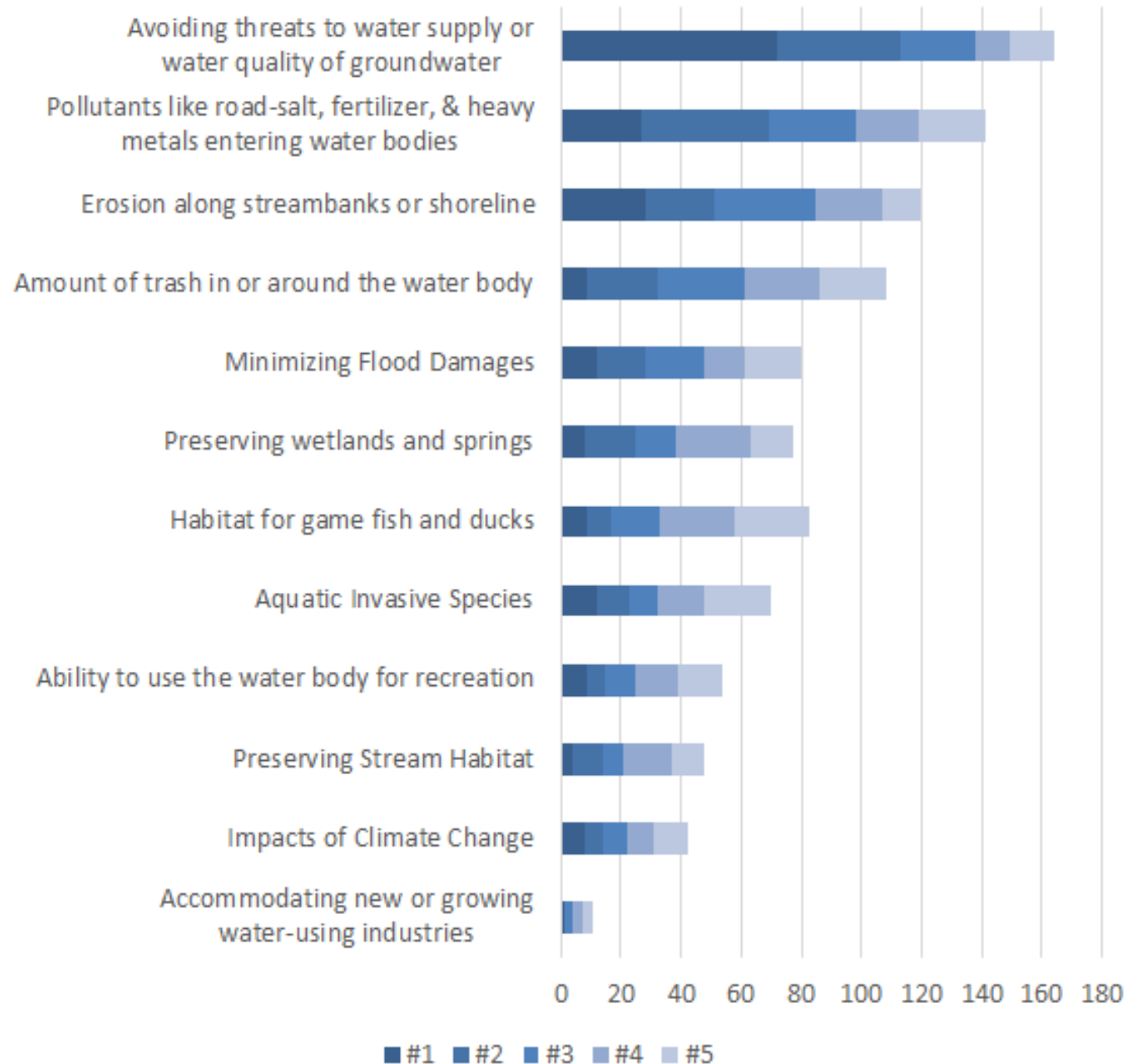
Resident survey results

- How important are each of the following issues?



Resident survey results

- Top five water and natural resource issues



Resident survey results

- Are there specific waterbodies or natural resources you are concerned about?
 - Lake Zumbro
 - Zumbro River (major forks)
 - Mississippi River
 - Lake Pepin
 - Groundwater
 - Smaller tributaries

Responses to Plan notification letter



CITY OF ORONOCO
Home of Downtown Oronoco Gold Rush



Minnesota Pollution Control Agency

Bear Valley
Watershed District

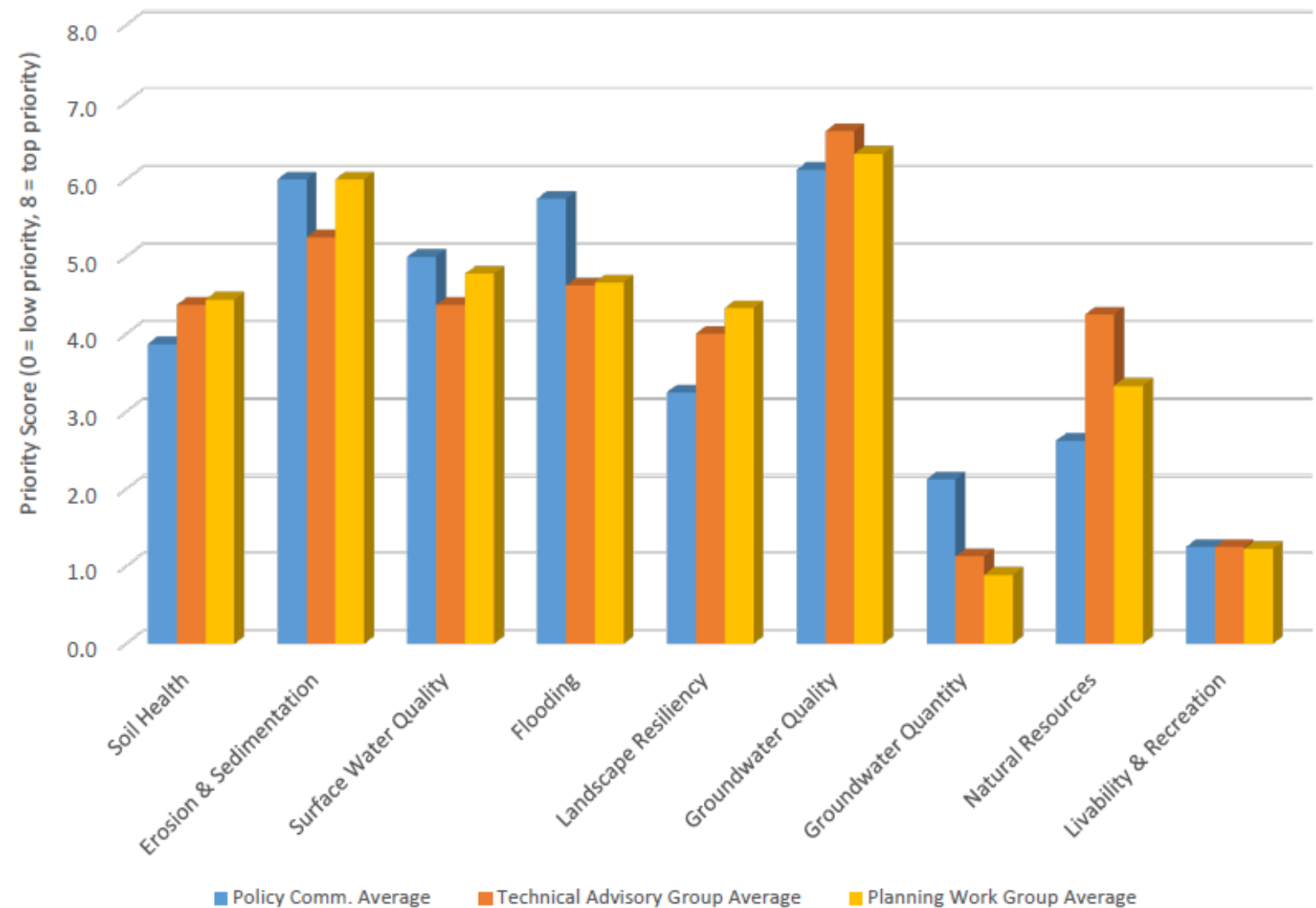


Partnership issue prioritization

- Degraded soil health
- Excessive erosion & sedimentation
- Degraded surface water quality
- Excessive flooding and water quantity
- Reduced landscape resiliency & altered hydrology
- Groundwater contamination
- Threatened groundwater supply
- Threats to fish, wildlife, and habitat
- Reduced livability and recreation

Partnership issue prioritization

Priority Scores for Issue Areas - DRAFT



Small group workshop

- What do you think are the major issues in the watershed?
 - Do you agree with the survey results and Partnership prioritization?
- What specific resources or areas are you concerned about?
- Within the issue categories, what specific problems are most important?
- What solutions do you see to these problems?
- What would you like to see more/less of?

Workshop summary

- What do you think are the major issues in the watershed?
 - Do you agree with the survey results and Partnership prioritization?
- What specific resources or areas are you concerned about?
- Within the issue categories, what specific problems are most important?
- What solutions do you see to these problems?
- What would you like to see more/less of?

Future
involvement

Thank you for your participation!

For more information:

- Visit the Olmsted County webpage under “Zumbro 1W1P” for Plan updates
- Visit us on Facebook @ Olmsted SWCD
- Email us at: SWCD@co.olmsted.mn.us