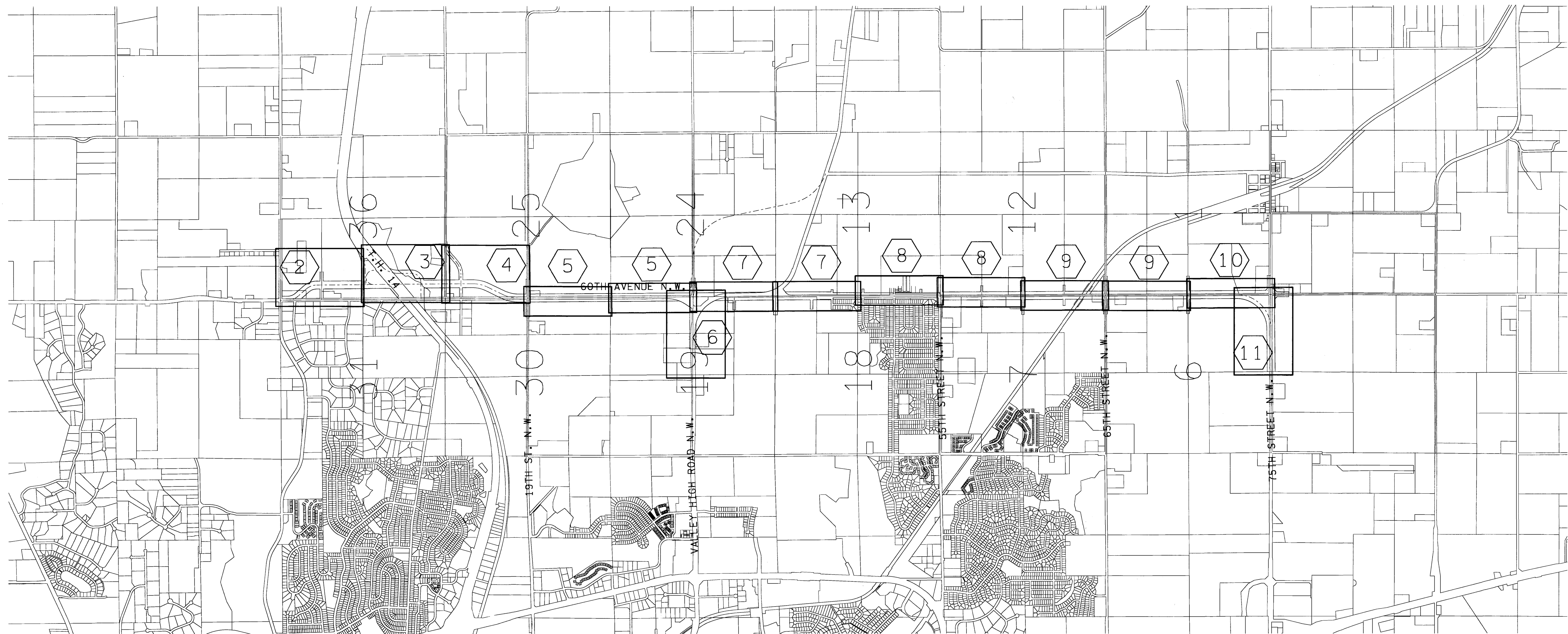


OLMSTED COUNTY OFFICIAL MAP NO. 16

60TH AVENUE N.W.



PROPOSED RIGHT OF WAY LIMITS FOR ROADWAY IMPROVEMENTS ACROSS SECTIONS 6, 7, 18, 19, 30 AND 31, TOWNSHIP 107, RANGE 14 AND SECTIONS 1, 12, 13, 24, 25 AND 36, TOWNSHIP 107, RANGE 15 AND SECTION 31, TOWNSHIP 108, RANGE 14 AND SECTION 36, TOWNSHIP 108, RANGE 15, OLMSTED COUNTY, MINNESOTA.

I, DEAN DUSHECK, PROFESSIONAL LAND SURVEYOR, HEREBY CERTIFY THAT THIS OFFICIAL MAP WAS PREPARED BY ME OR UNDER MY DIRECT SUPERVISION AND THAT I AM A DULY LICENSED PROFESSIONAL LAND SURVEYOR UNDER THE LAWS OF THE STATE OF MINNESOTA. THIS OFFICIAL MAP IS PREPARED IN ACCORDANCE TO AND FOR THE PURPOSES DESCRIBED IN MINNESOTA STATUTE 394.361.



 DEAN DUSHECK
 MN LICENSE NO. 16679
 1/12/10
 DATE

COUNTY SURVEYOR

I HEREBY CERTIFY THAT THE CENTER LINE AND ACQUISITION LINES SHOWN ON THIS OFFICIAL MAP HAVE BEEN CHECKED AND FOUND TO BE ACCURATE IN COMPLIANCE WITH MINNESOTA STATUTE SECTION 394.361, DATED THIS 25 DAY OF FEBRUARY, 2010.

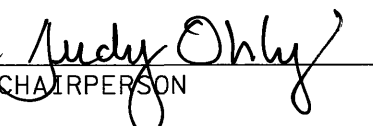

 JOEL THORESON, OLMSTED COUNTY SURVEYOR

RECOMMENDED FOR APPROVAL BY OLMSTED COUNTY PLANNING ADVISORY COMMISSION.

 2-26-2010
 CHAIRPERSON DATE

BOARD OF COUNTY COMMISSIONERS CERTIFICATE:

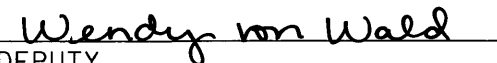
THIS OFFICIAL MAP WAS APPROVED AND ACCEPTED BY THE BOARD OF COUNTY COMMISSIONERS OF THE COUNTY OF OLMSTED, STATE OF MINNESOTA, AT A REGULAR MEETING HELD THIS 19th DAY OF January, 2010, A.D.


 CHAIRPERSON

A-1225341

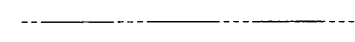
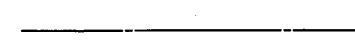







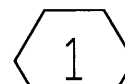
DOCUMENT NUMBER
 I HEREBY CERTIFY THAT THIS INSTRUMENT WAS FILED IN THE OFFICE OF PROPERTY RECORDS AND LICENSING FOR THE RECORD ON THIS 12th DAY OF March, 2010, 3 O'CLOCK P. M. AND WAS DULY RECORDED IN THE OLMSTED COUNTY RECORDS.


 DIRECTOR OF PROPERTY RECORDS & LICENSING


 DEPUTY



LEGEND

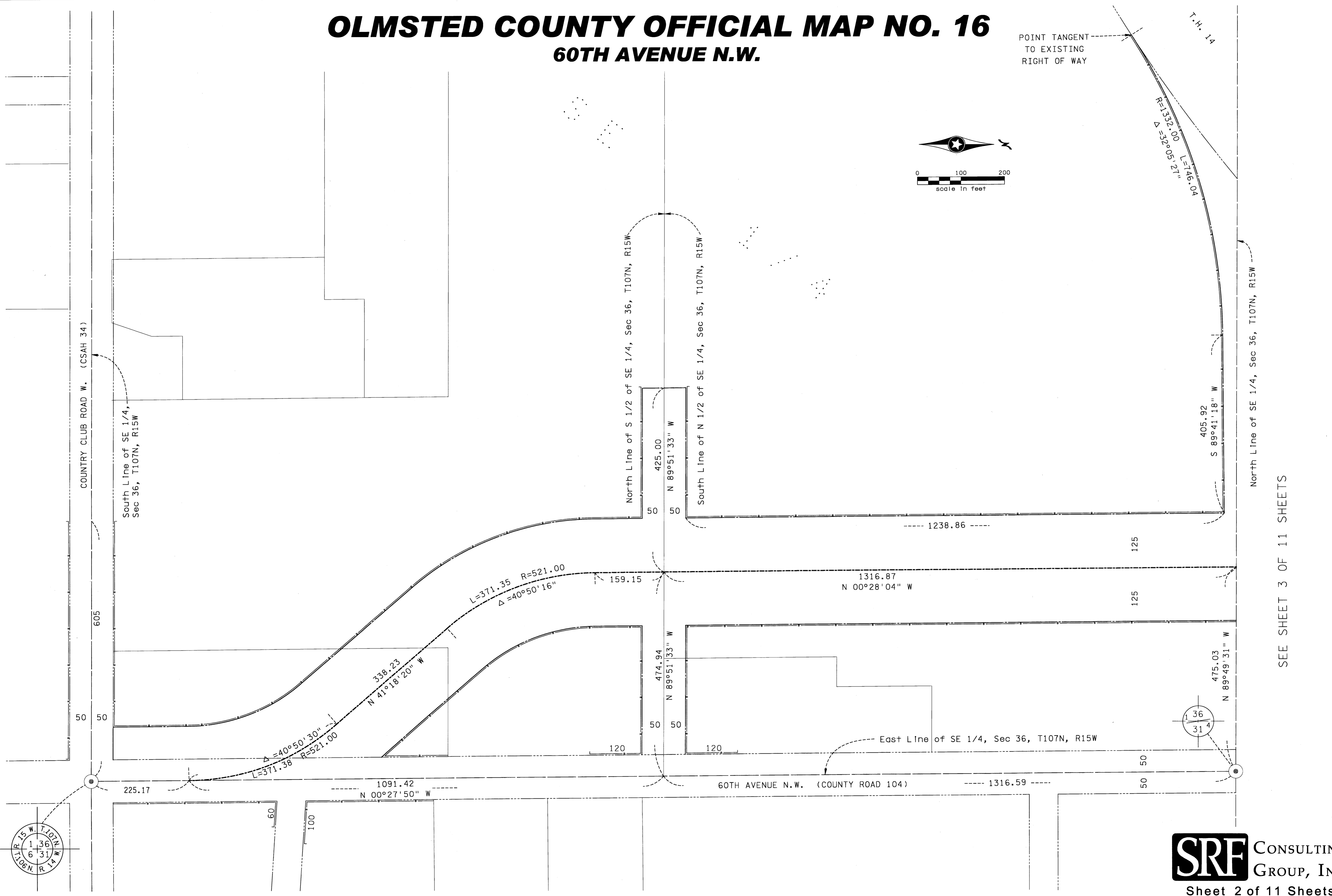
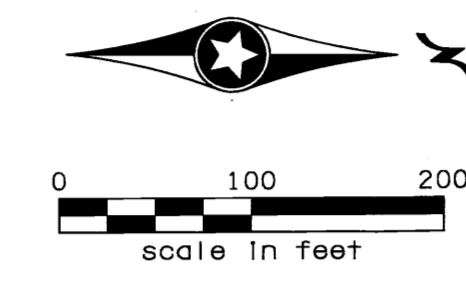
-  INDICATES EXISTING RIGHT OF WAY
-  INDICATES PROPOSED RIGHT OF WAY
-  INDICATES SECTION LINE
-  INDICATES QUARTER LINE
-  INDICATES SIXTEENTH LINE
-  INDICATES PROPERTY LINE
-  INDICATES CENTERLINE
-  INDICATES EXISTING CONTROLLED ACCESS
-  INDICATES PROPOSED CONTROLLED ACCESS
-  INDICATES SHEET NO.

BEARINGS ARE REFERENCED TO THE OLMSTED COUNTY COORDINATE SYSTEM, NAD83/86 ADJ.

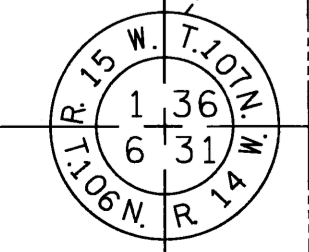
OLMSTED COUNTY OFFICIAL MAP NO. 16

60TH AVENUE N.W.

POINT TANGENT
TO EXISTING
RIGHT OF WAY



SEE SHEET 3 OF 11 SHEETS

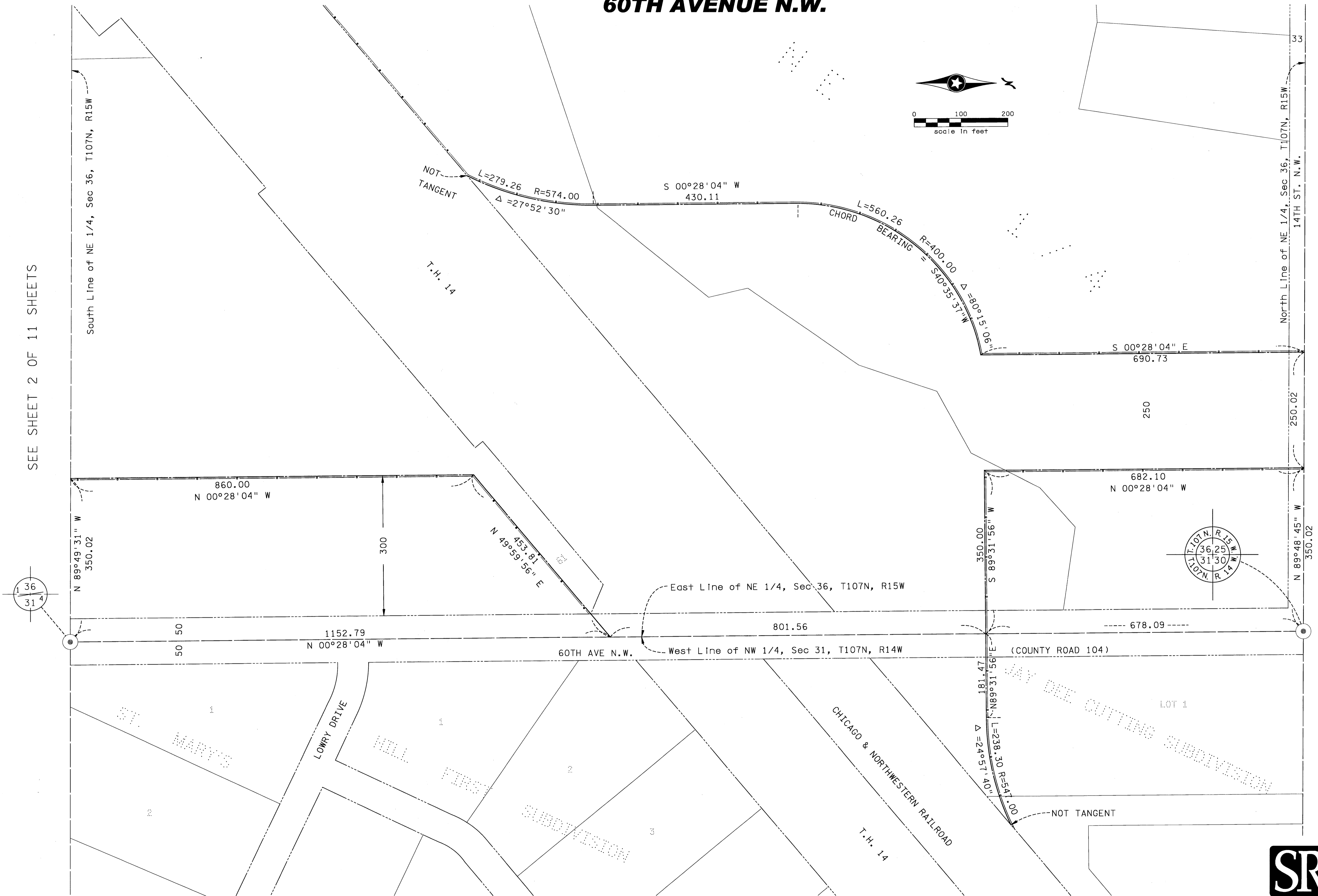


OLMSTED COUNTY OFFICIAL MAP NO. 16

60TH AVENUE N.W.

SEE SHEET 2 OF 11 SHEETS

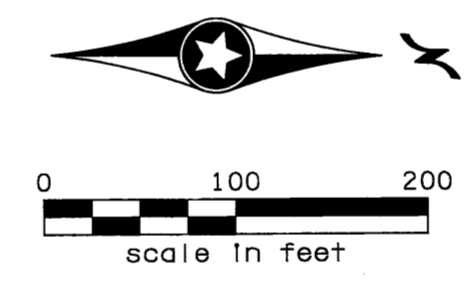
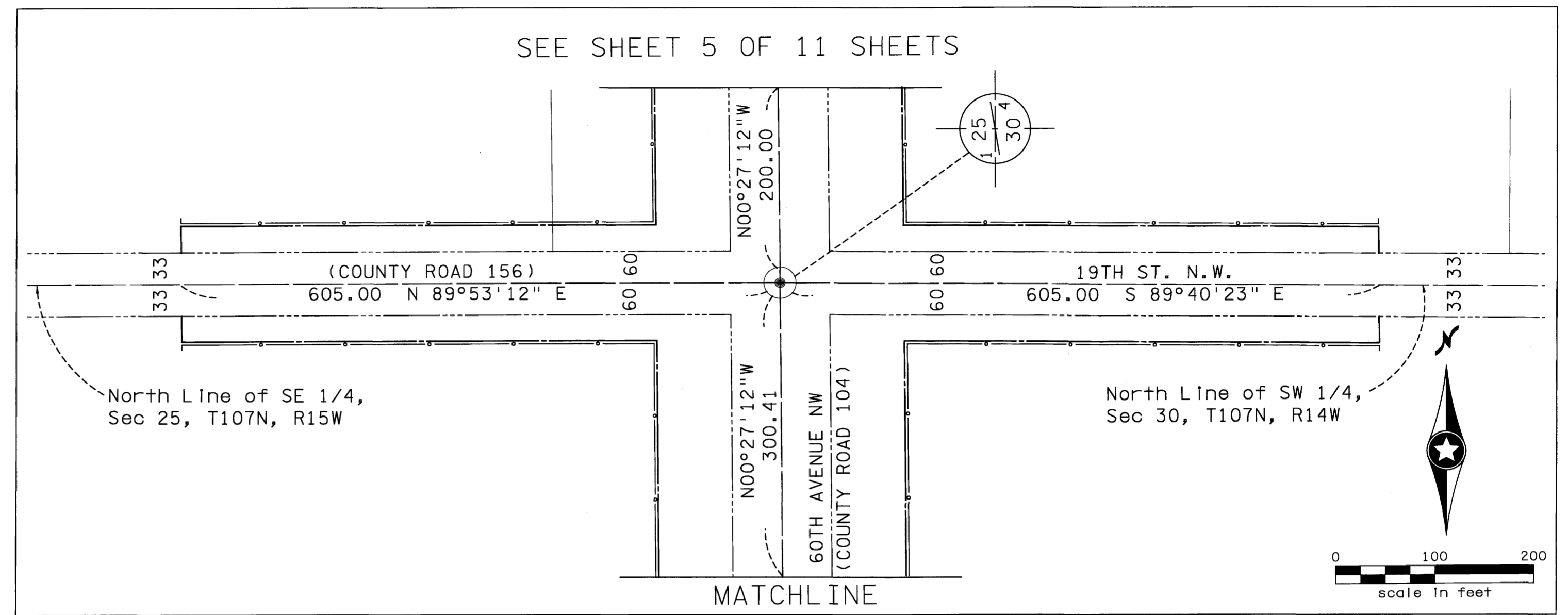
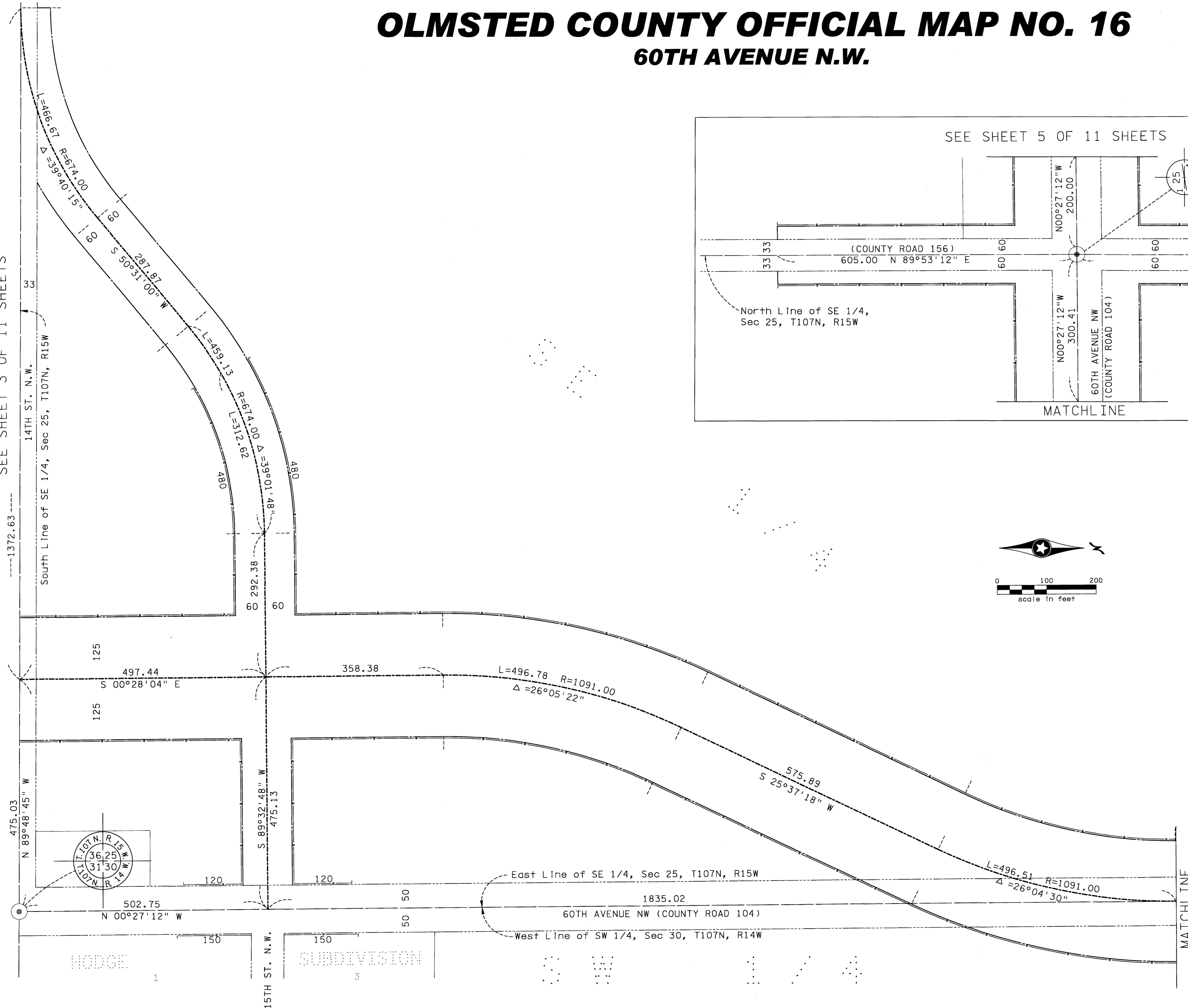
SEE SHEET 4 OF 11 SHEETS



OLMSTED COUNTY OFFICIAL MAP NO. 16

60TH AVENUE N.W.

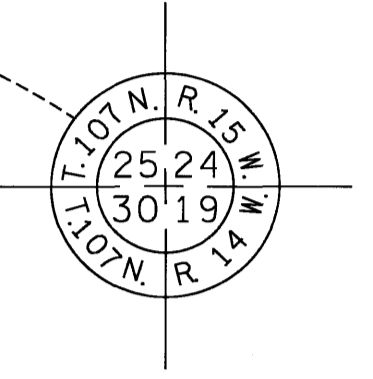
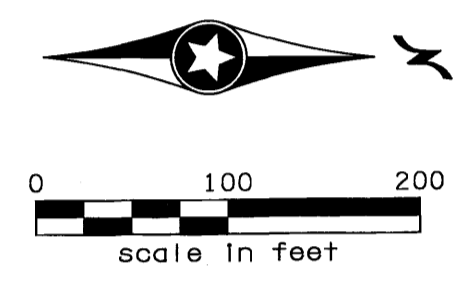
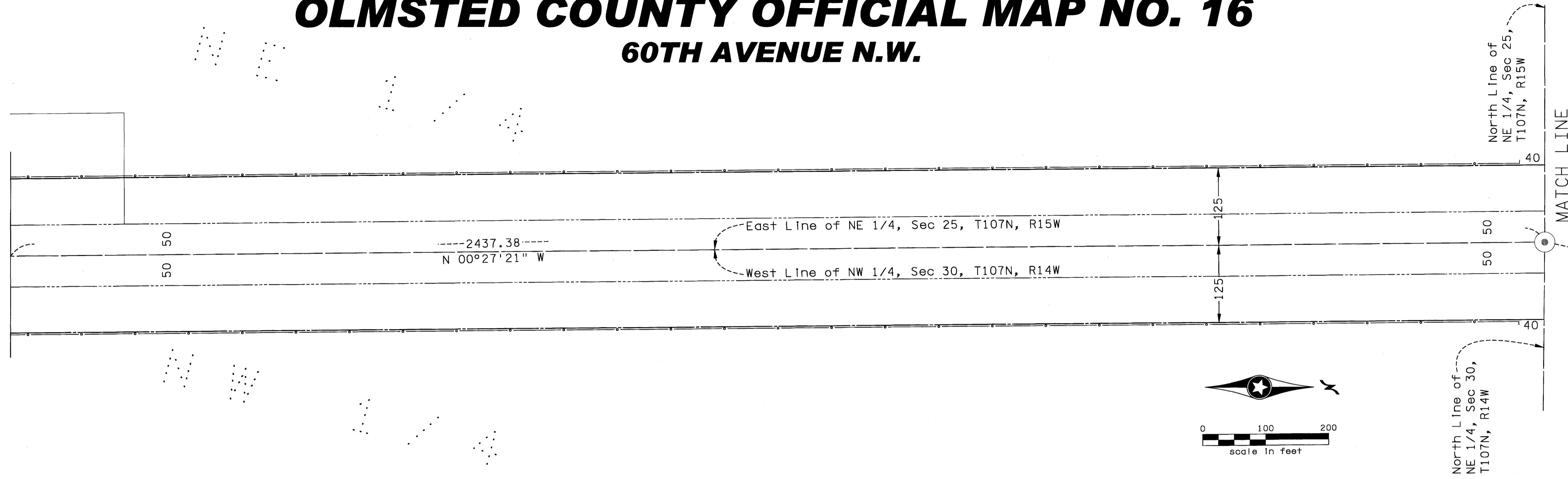
SEE SHEET 3 OF 11 SHEETS



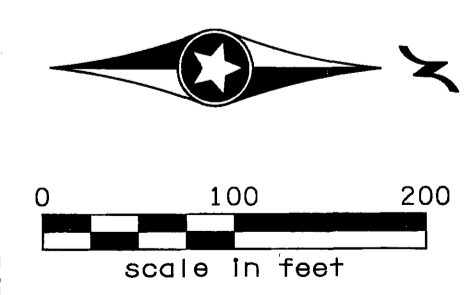
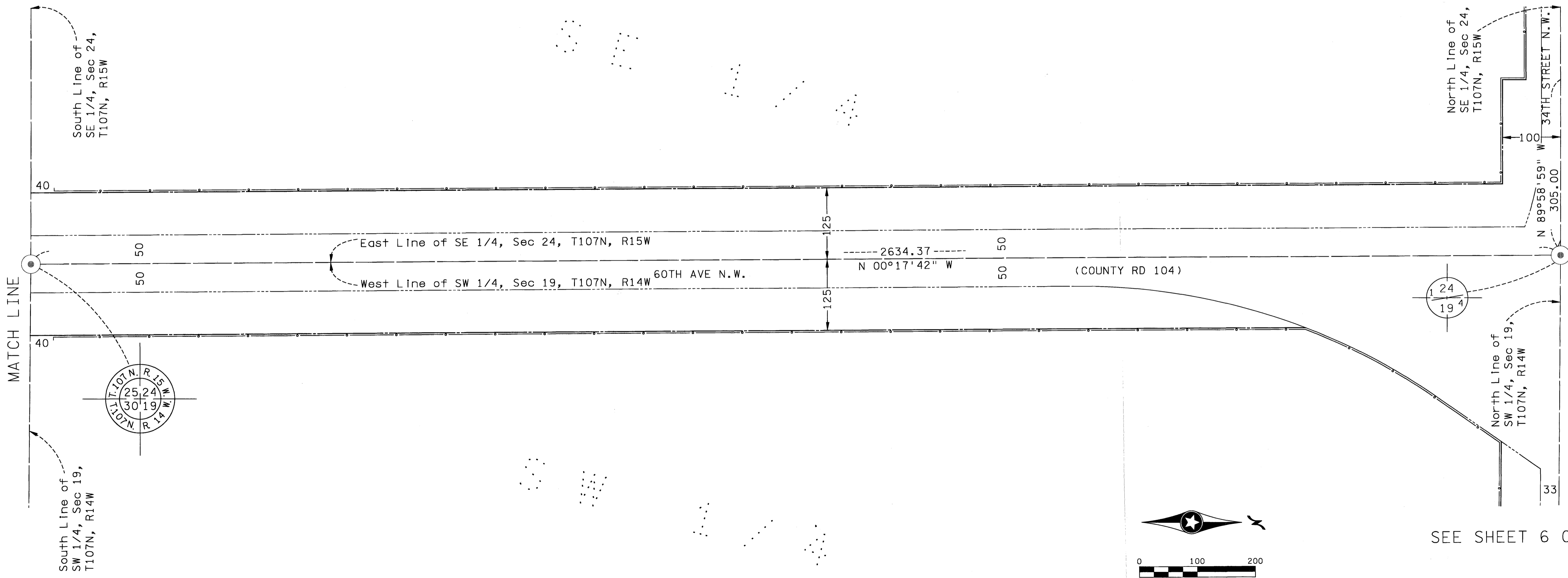
OLMSTED COUNTY OFFICIAL MAP NO. 16

60TH AVENUE N.W.

SEE SHEET 4 OF 11 SHEETS



SEE SHEET 6 OF 11 SHEETS



SEE SHEET 6 OF 11 SHEETS

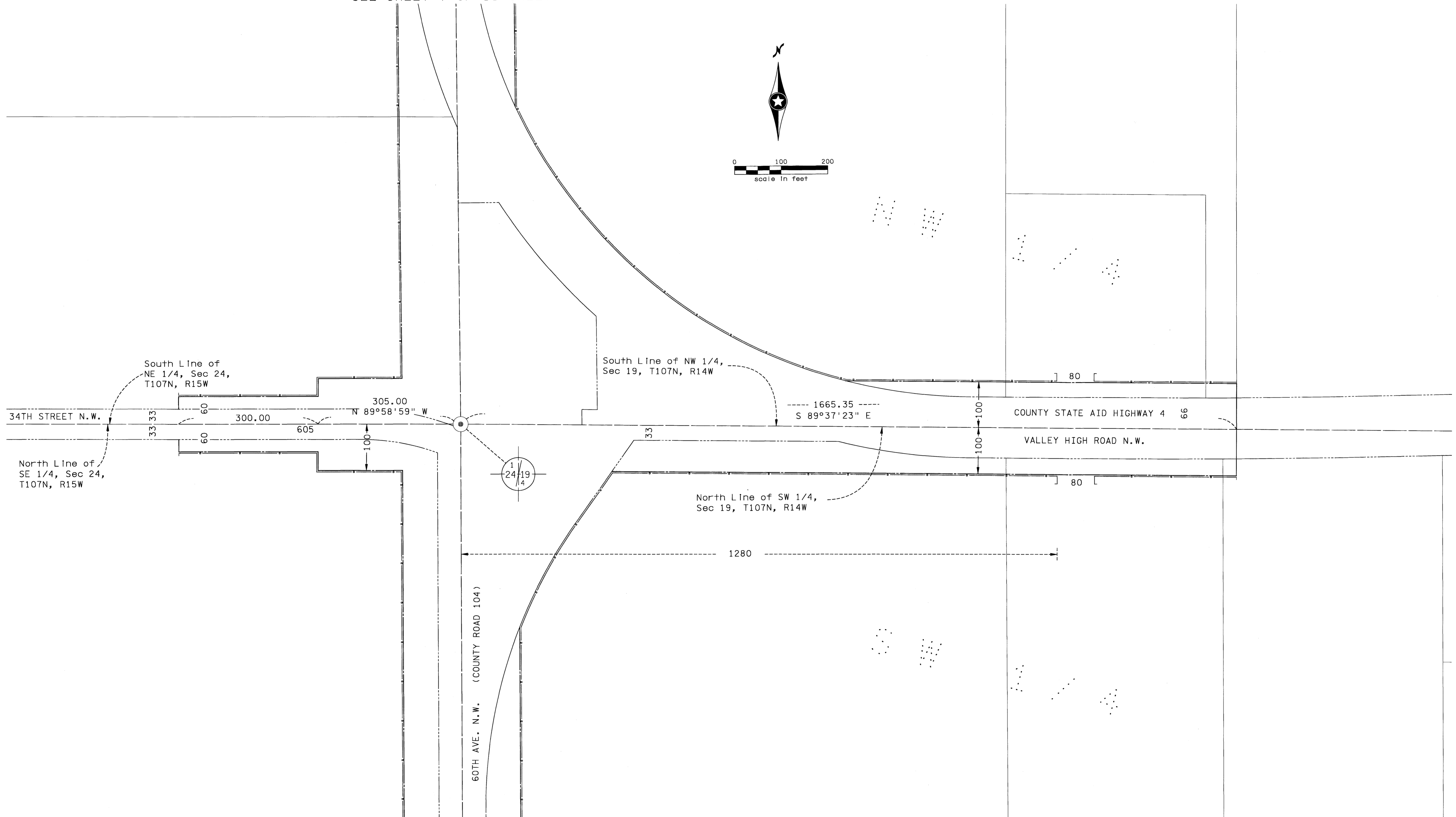
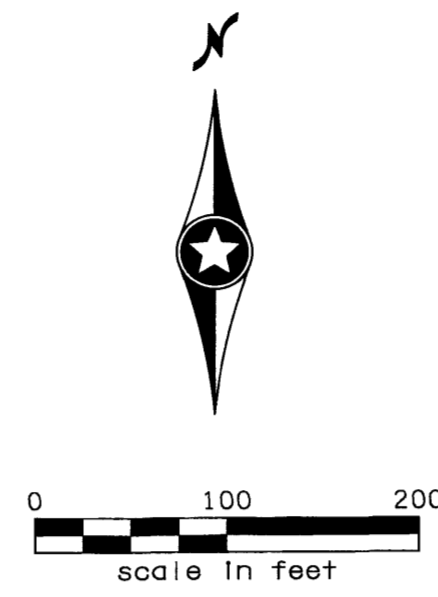
SEE SHEET 7 OF 11 SHEETS

OLMSTED COUNTY OFFICIAL MAP NO. 16

60TH AVENUE N.W.

SEE SHEET 7 OF 11 SHEETS

SEE SHEET 5 OF 11 SHEETS

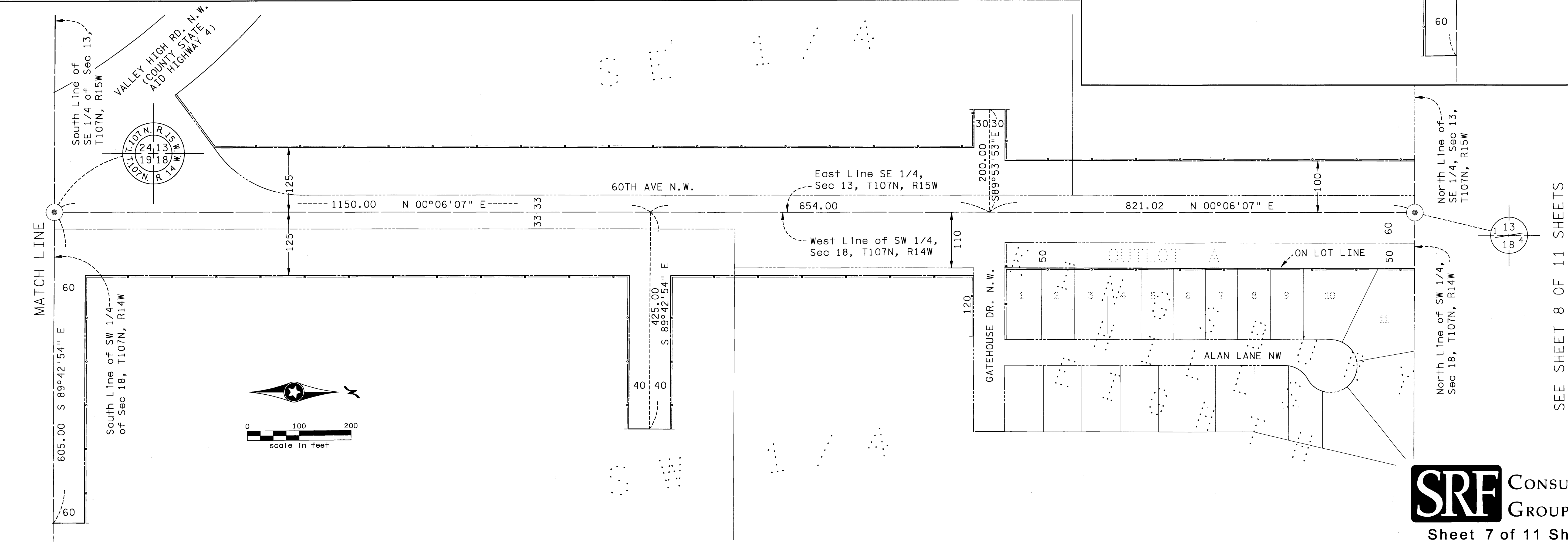
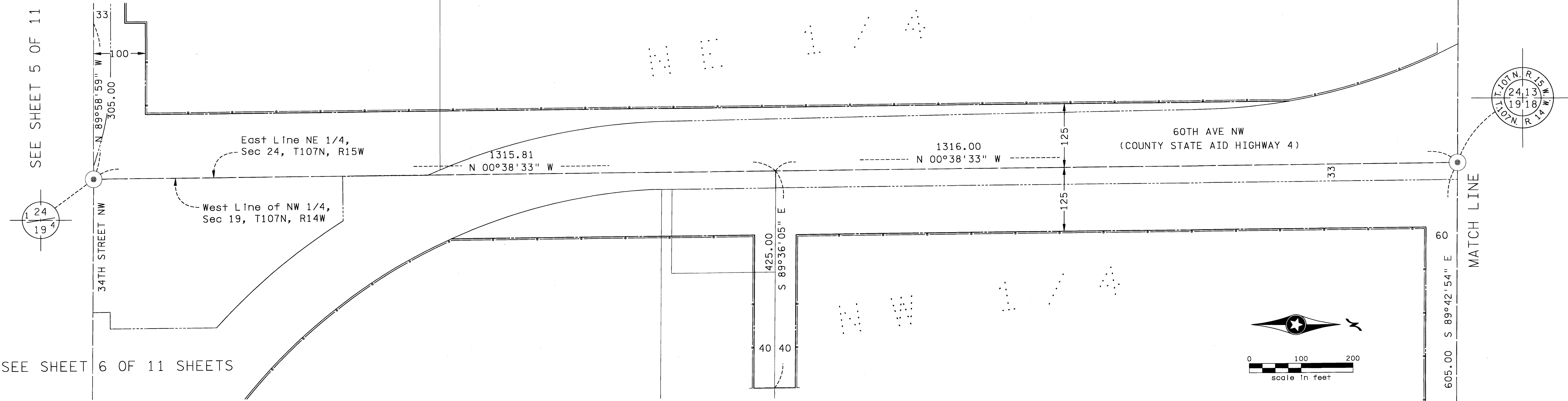


OLMSTED COUNTY OFFICIAL MAP NO. 16

60TH AVENUE N.W.

SEE SHEET 5 OF 11 SHEETS

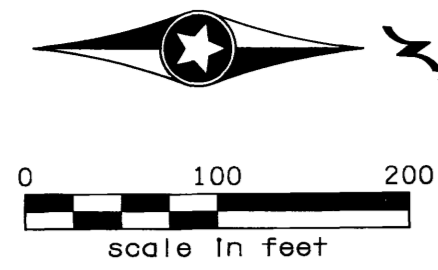
SEE SHEET 6 OF 11 SHEETS



SEE SHEET 8 OF 11 SHEETS

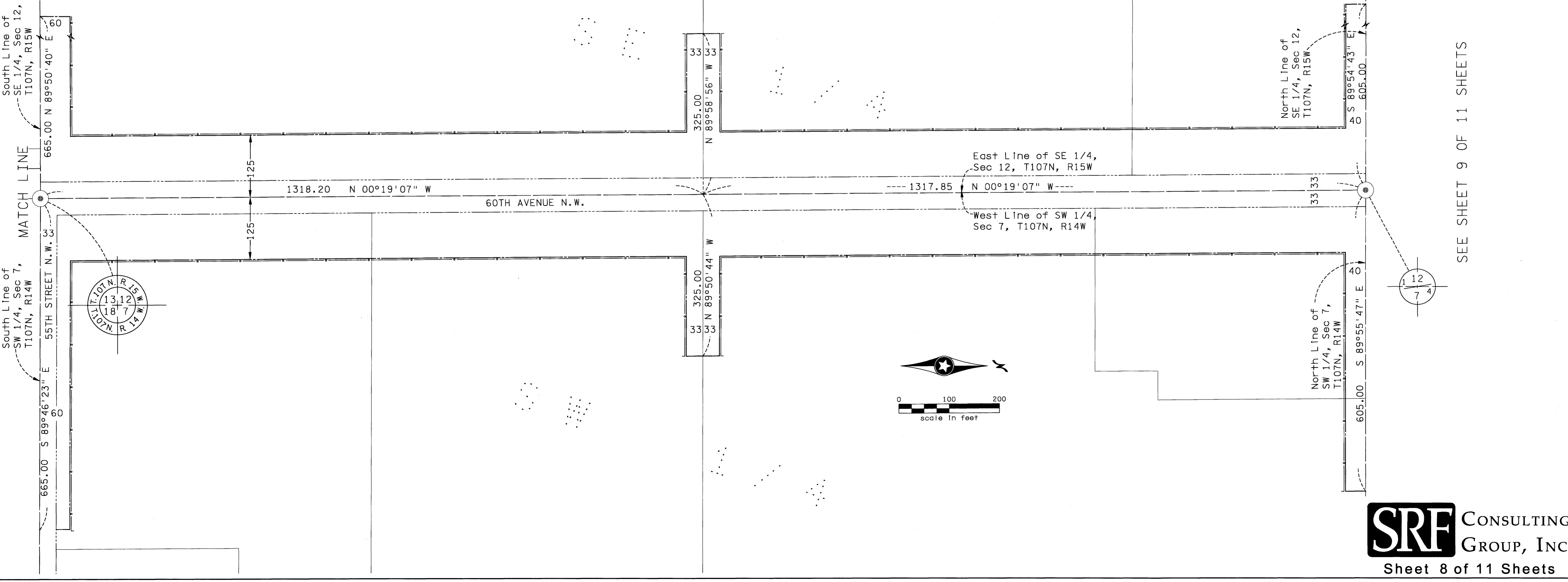
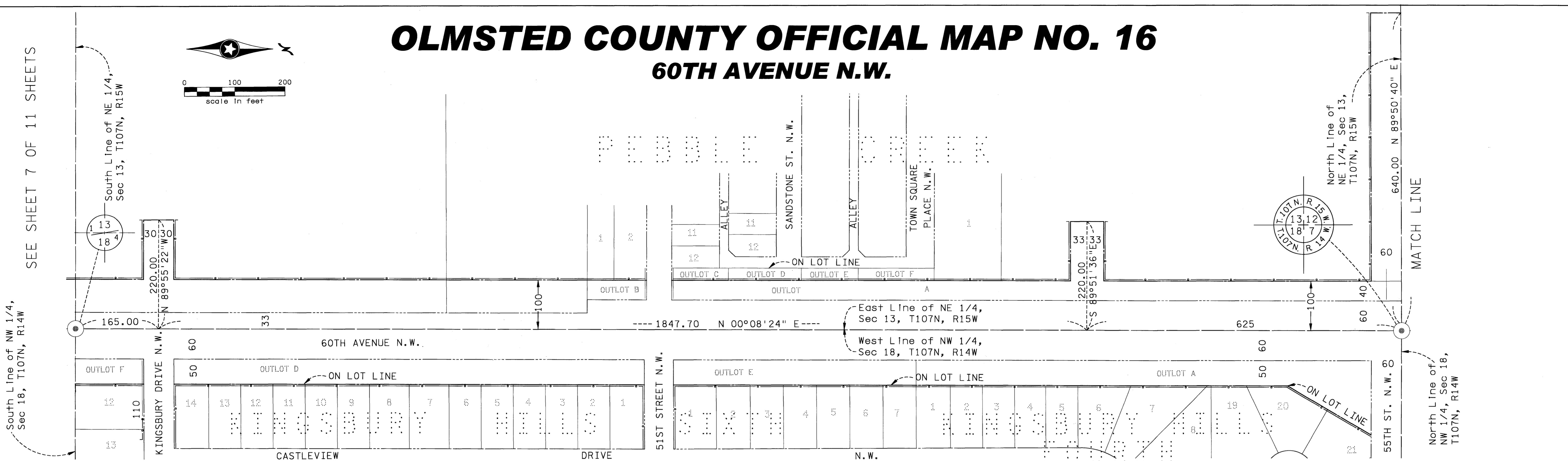
OLMSTED COUNTY OFFICIAL MAP NO. 16

60TH AVENUE N.W.



SEE SHEET 7 OF 11 SHEETS

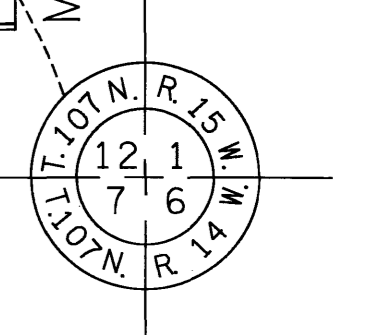
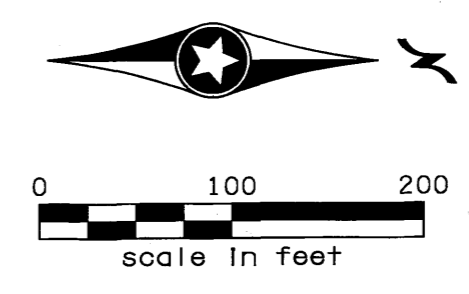
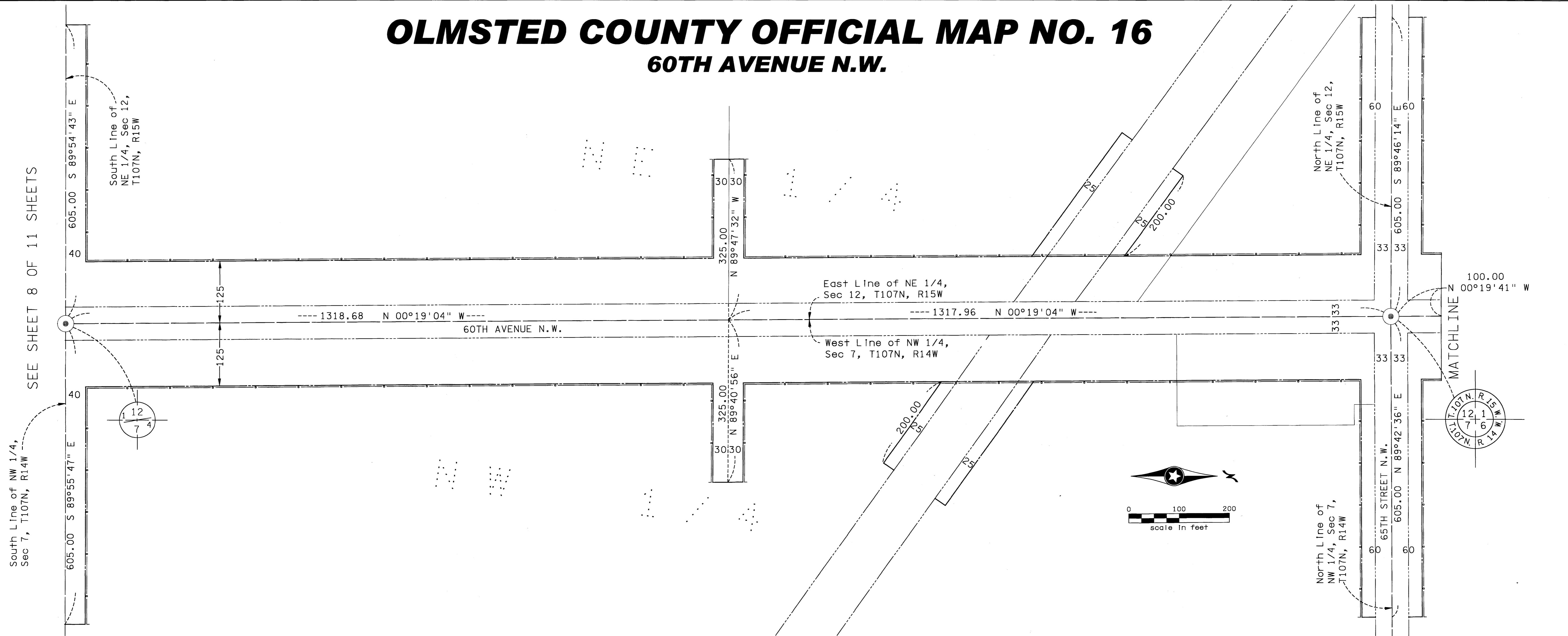
SEE SHEET 9 OF 11 SHEETS



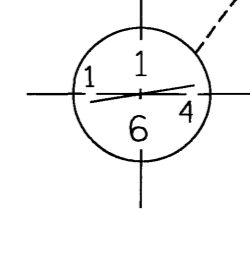
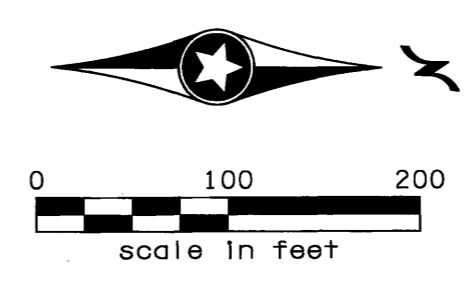
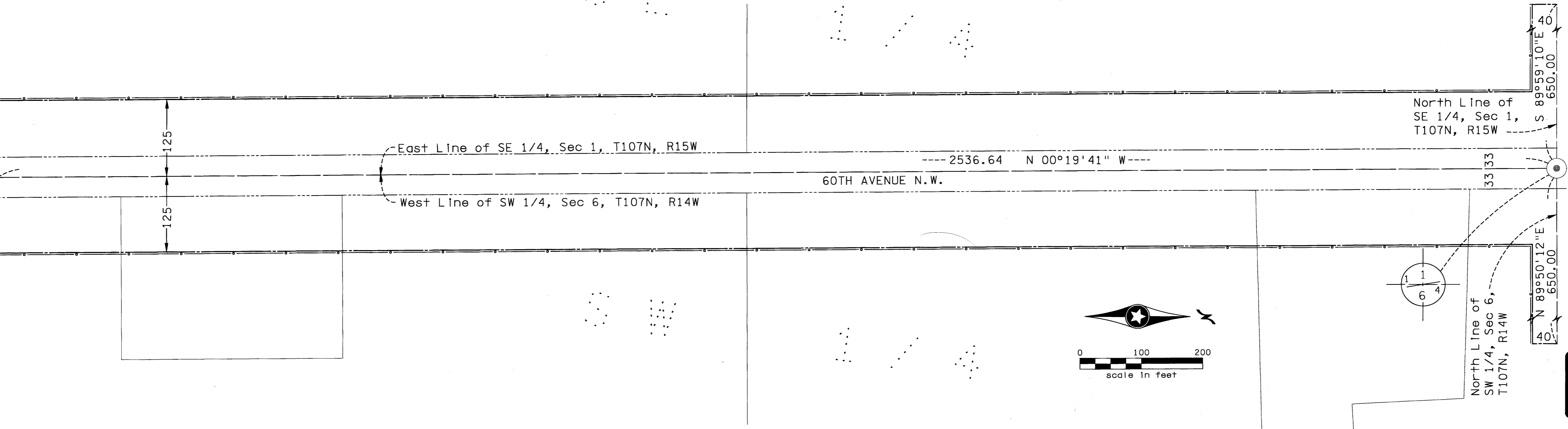
OLMSTED COUNTY OFFICIAL MAP NO. 16

60TH AVENUE N.W.

SEE SHEET 8 OF 11 SHEETS



MATCHLINE

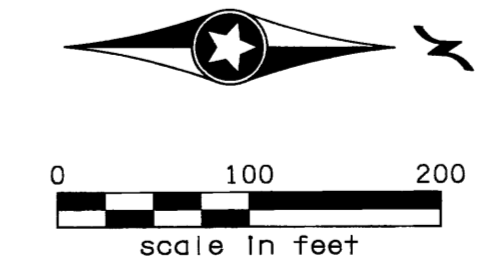
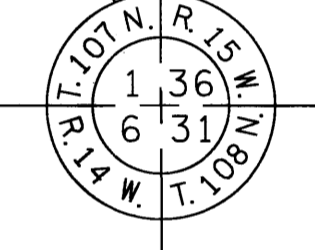
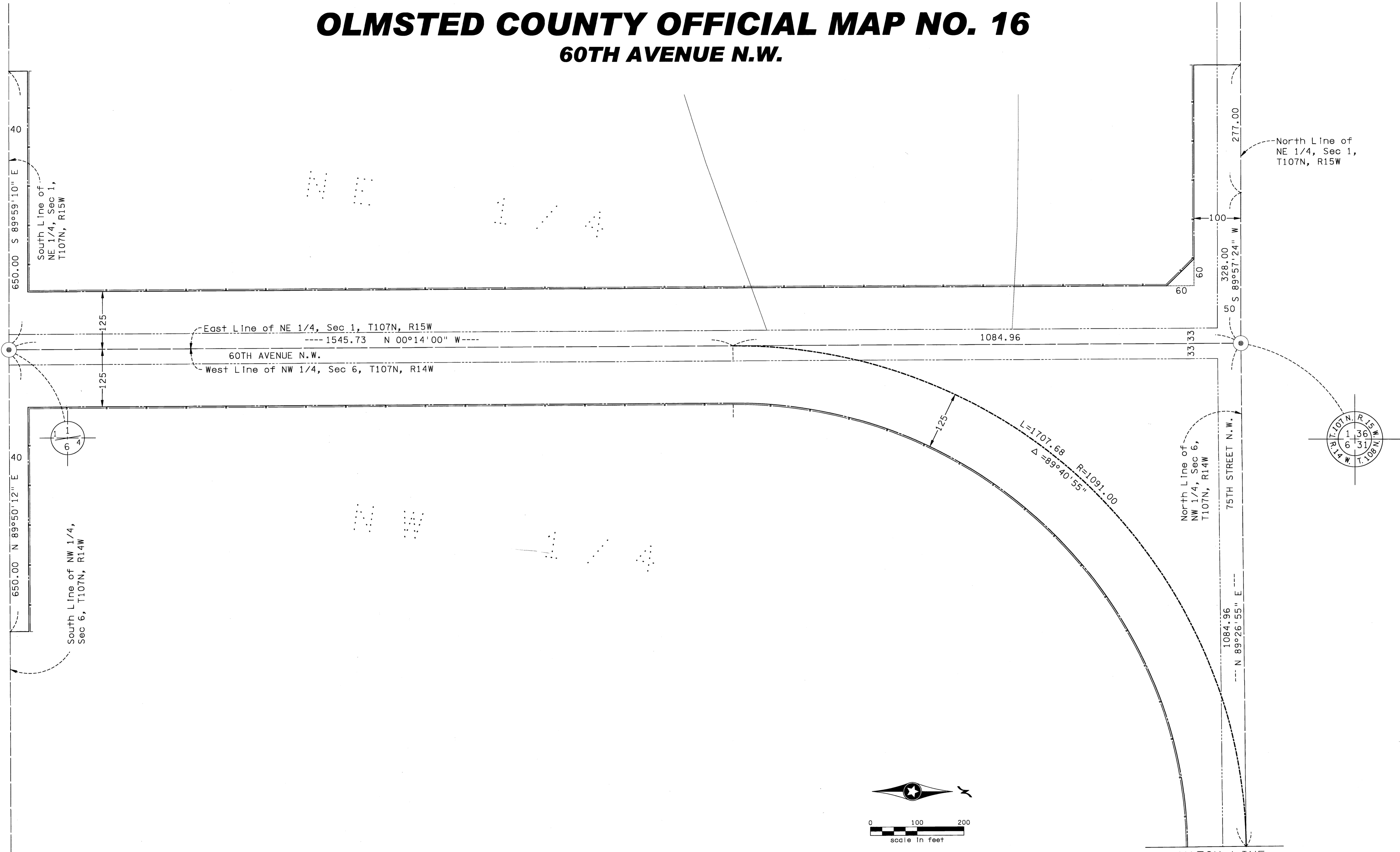


SEE SHEET 10 OF 11 SHEETS

OLMSTED COUNTY OFFICIAL MAP NO. 16

60TH AVENUE N.W.

SEE SHEET 9 OF 11 SHEETS



MATCH LINE
SEE SHEET 11 OF 11 SHEETS

OLMSTED COUNTY OFFICIAL MAP NO. 16

60TH AVENUE N.W.

