



# Welcome

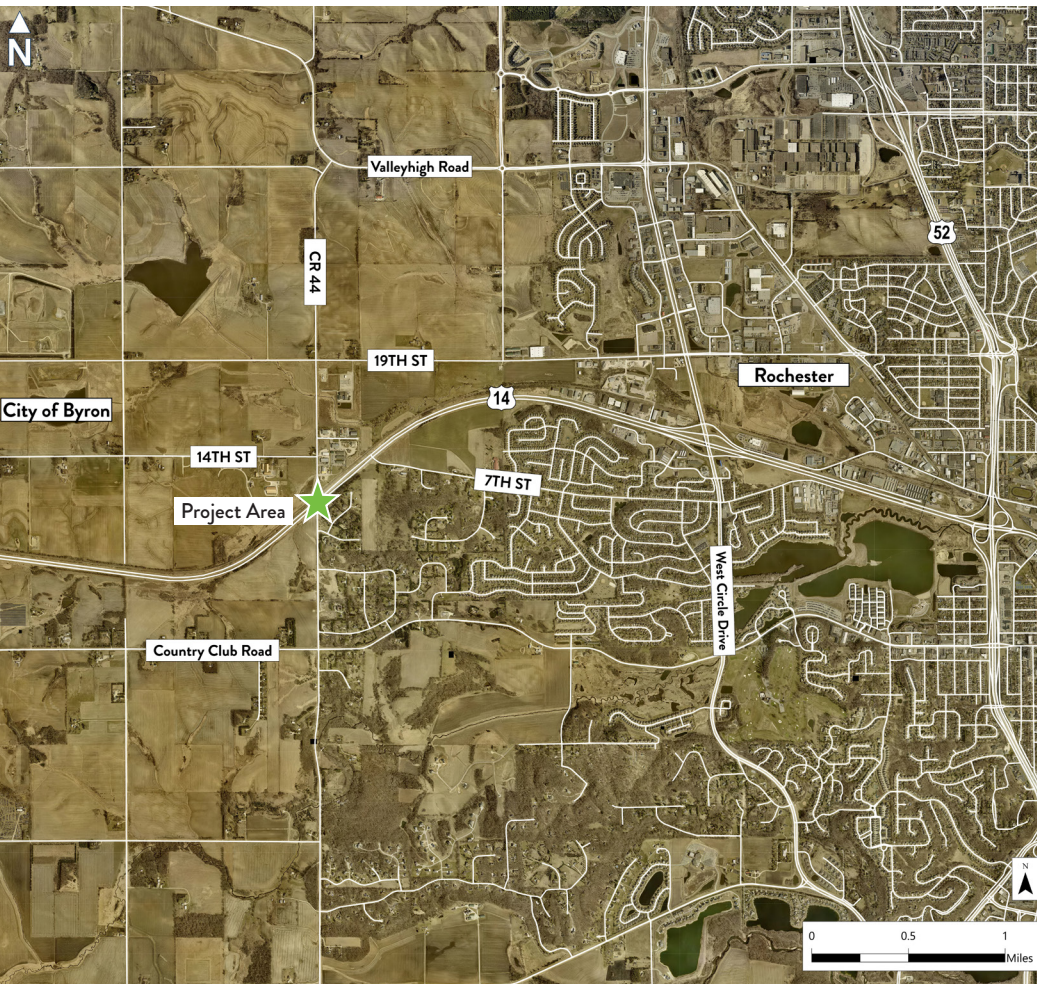
## County Road 44 and Highway 14 Intersection Project Public Meeting

Wednesday December 14th  
5:30 - 7:00 pm





# County Road 44 (CR 44) & Highway 14 (Hwy 14) Project



## Long-term Improvements at CR 44 & Hwy 14

- Construction for this project is partially funded. Olmsted County and MnDOT are actively seeking construction funding sources.

## Federal Planning Process

- Design is following federal guidelines for environmental documentation and public engagement.



## Interim Improvements at CR 44 & Hwy 14

- MnDOT has made interim safety improvements along this segment of Hwy 14. Working to determine long-term solution.





# Purpose and Need



- The purpose of the project is to improve safety and mobility at the County Road 44 (County State Aid Highway 44 / CSAH 44) and Highway 14 (Trunk Highway 14 / TH 14) intersection.
- A secondary purpose of the project is to improve walkability/ bikeability at CR 44 / Hwy 14 and address safety risks with the CR 44 / CP Railway crossing.

## Primary Needs



### Vehicle Safety

- Address safety concerns at Hwy 14 / CR 44 intersection



### Vehicle Mobility

- Reduce delays on CR 44 at Hwy 14 intersection

## Secondary Needs



### Walkability/Bikeability



### Railroad Safety



# Alternative 1

## Folded Diamond w. 7th St. Overpass



### + Pros

- Grade separation of Hwy 14 and CR 44
- Grade separation Hwy 14 and 7th St.
- Buffer from neighborhood to south

### - Cons

- Tight fit for 7th St. near businesses
- Expensive curved bridges over railroad



Rendering shows a grade-separated CR 44 passing over Hwy 14 and the CP railroad.



# Alternative 2

## Westbound Tight Diamond



### + Pros

- No ramp bridges over railroad
- Grade separation of Hwy 14 and 7th St.
- Buffer from neighborhood to south

### - Cons

- Reconstruction of westbound Hwy 14 required
- Taller retaining walls on westbound ramps
- Skewed ramp terminal intersection

# Alternative 2B

## Reduced Skew with Westbound Tight Diamond



### + Pros

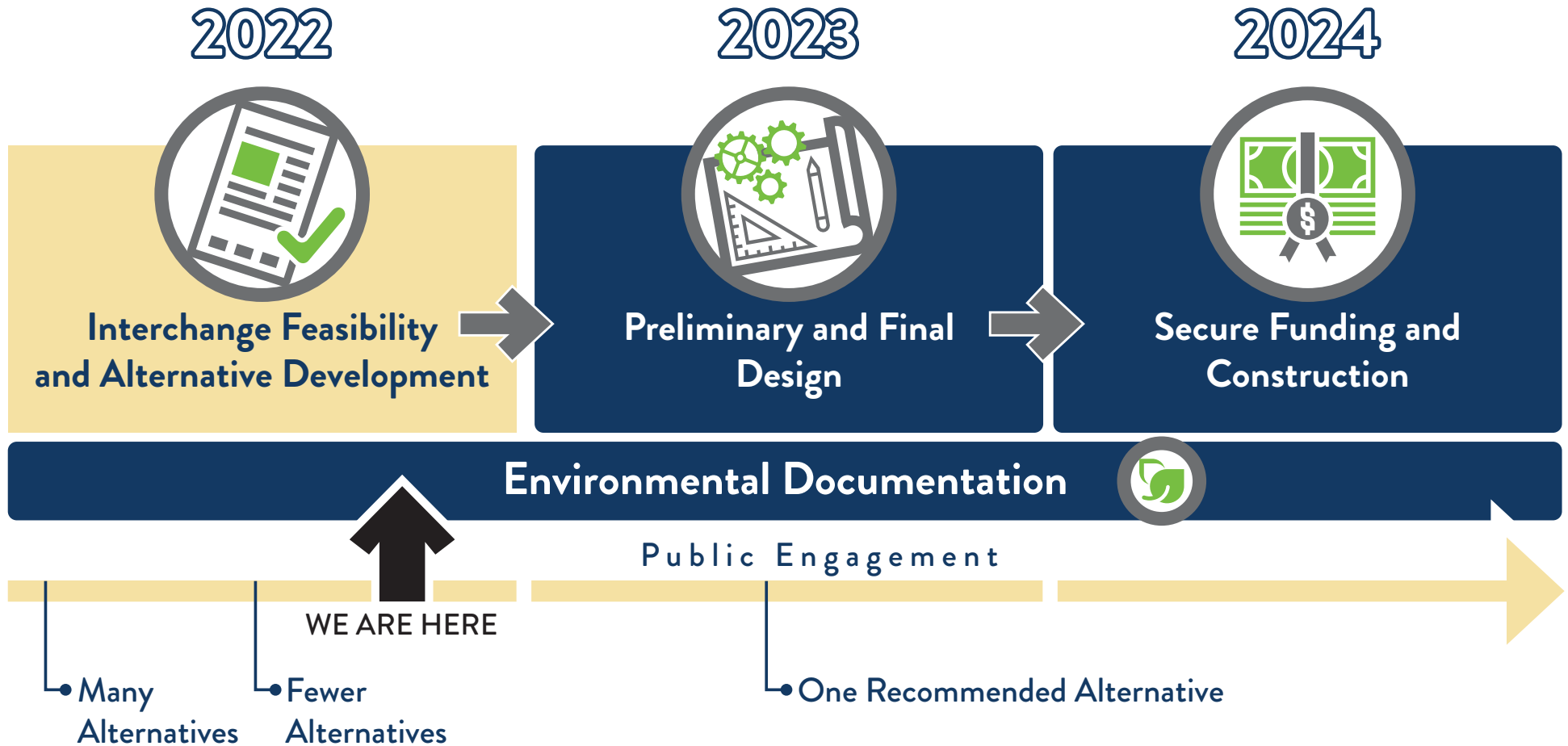
- Reduced skew of bridge crossing
- No ramp bridges over railroad
- Grade separation of Hwy 14 and railroad

### - Cons

- Reconstruction of westbound Hwy 14 required
- Taller retaining walls on westbound ramps
- Reduced buffer from neighborhood to south



# Project Schedule



# Next Steps



## What's next for CR 44 & Hwy 14?



Evaluate long-term solutions



Environmental documentation



Secure funding for construction



Additional public engagement





# Stay Involved

## Share



Please share the project website with friends, family, and coworkers that travel on or around Hwy 14 and CR 44.  
**[bit.ly/3zuf7Kp](https://bit.ly/3zuf7Kp)**

## Stay Updated



You can stay involved and submit comments or questions to the project team by visiting the project page on the Olmsted County website.

## We want to hear from you



Complete a comment form tonight to share input.



Visit project web-page:  
**[bit.ly/3zuf7Kp](https://bit.ly/3zuf7Kp)**

## Contact



**Ben Johnson**  
Director of Public Works-County Engineer  
[benjamin.johnson@olmstedcounty.gov](mailto:benjamin.johnson@olmstedcounty.gov)



**Aaron Breyfogle**  
MnDOT Contact  
[aaron.breyfogle@state.mn.us](mailto:aaron.breyfogle@state.mn.us)

