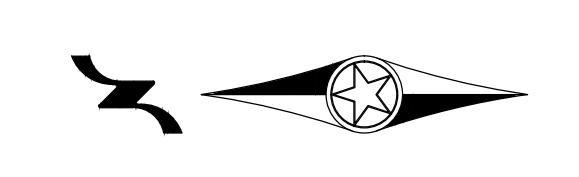


- LEGEND
- CONCRETE PAVEMENT
  - BITUMINOUS PAVEMENT
  - GRAVEL PAVEMENT
  - DRIVEWAY
  - EXISTING RIGHT OF WAY
  - PROPOSED RIGHT OF WAY
  - TEMPORARY EASEMENT



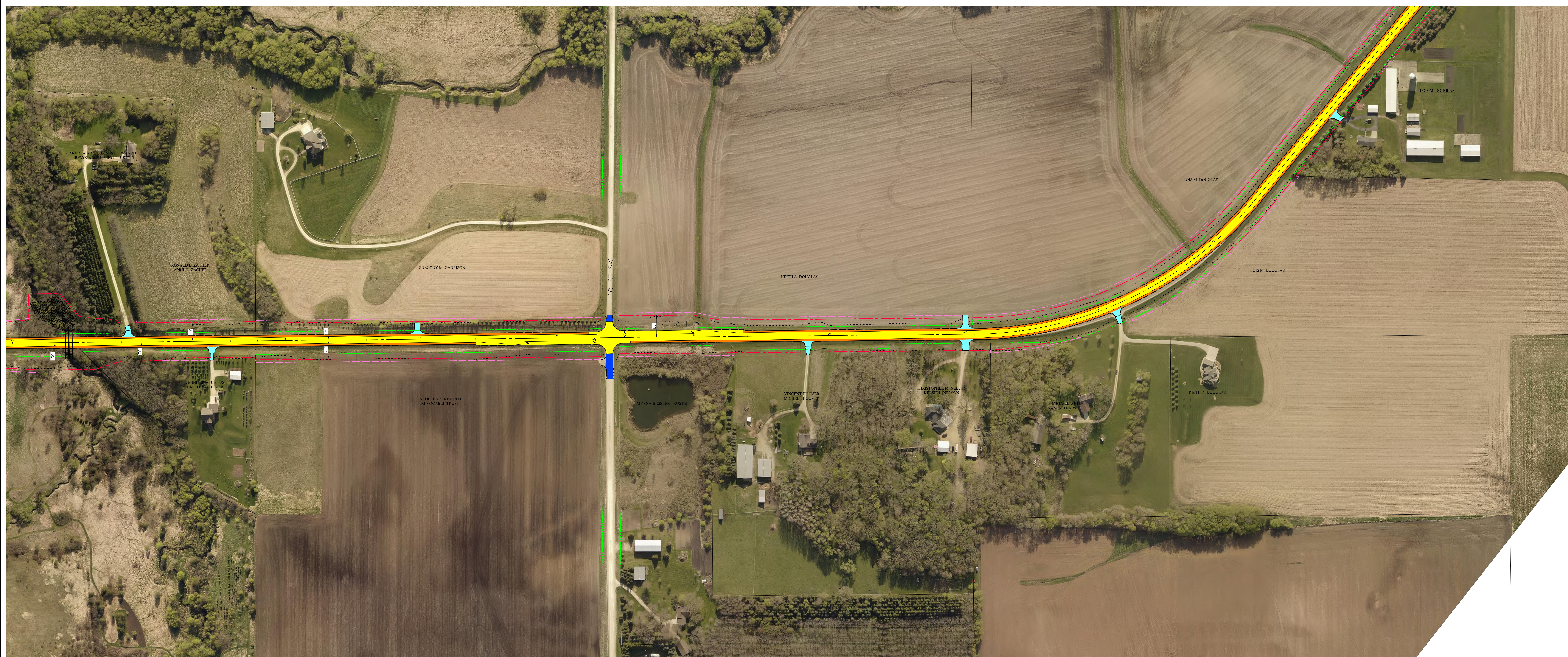
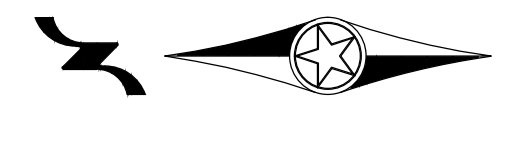
K:\PA\Virginia\_Engineering\Projects\CSAH 5\PA 05-05-018\Engineering\CAV\PAISP\CSAH 5 2nd Project Open House Layout.dwg



OLMSTED COUNTY  
PUBLIC WORKS  
2122 CAMPUS DRIVE SE,  
SUITE 200  
ROCHESTER, MN 55904

**C.S.A.H. 5**

- LEGEND
- CONCRETE PAVEMENT
  - BITUMINOUS PAVEMENT
  - GRAVEL PAVEMENT
  - DRIVEWAY
  - EXISTING RIGHT OF WAY
  - PROPOSED RIGHT OF WAY
  - TEMPORARY EASEMENT



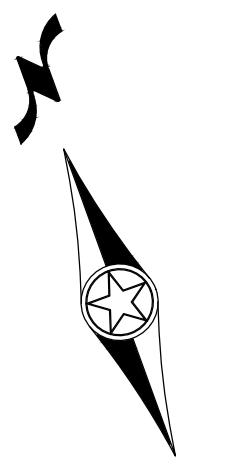
K:\PA\Virginia\_Engineering\Projects\CSAH 5\2nd Project Open House Layout.dwg



OLMSTED COUNTY  
PUBLIC WORKS  
2122 CAMPUS DRIVE SE,  
SUITE 200  
ROCHESTER, MN 55904

**C.S.A.H. 5**

- LEGEND
- CONCRETE PAVEMENT
  - BITUMINOUS PAVEMENT
  - GRAVEL PAVEMENT
  - DRIVEWAY
  - EXISTING RIGHT OF WAY
  - PROPOSED RIGHT OF WAY
  - TEMPORARY EASEMENT



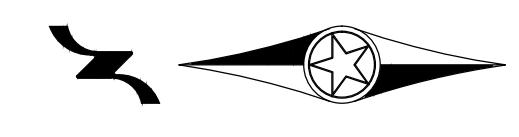
K:\PA\Virginia\_Engineering\Projects\CSAH 5\SEP\_05-05-05-018\Engineering\CAV\PLANSET\CSAH 5\_2nd Project\_Open House\_Layout.dwg



OLMSTED COUNTY  
PUBLIC WORKS  
2122 CAMPUS DRIVE SE.  
SUITE 200  
ROCHESTER, MN 55904

**C.S.A.H. 5**

- LEGEND
- CONCRETE PAVEMENT
  - BITUMINOUS PAVEMENT
  - GRAVEL PAVEMENT
  - DRIVEWAY
  - EXISTING RIGHT OF WAY
  - PROPOSED RIGHT OF WAY
  - TEMPORARY EASEMENT



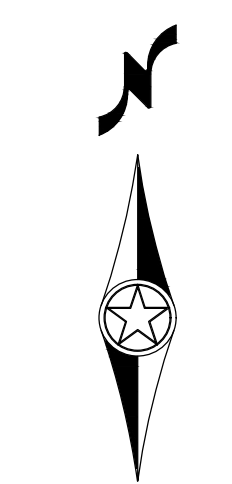
K:\PA\Virginia\_Engineering\Projects\CSAH 5\2nd Project Open House Layout.dwg



OLMSTED COUNTY  
PUBLIC WORKS  
2122 CAMPUS DRIVE SE,  
SUITE 200  
ROCHESTER, MN 55904

**C.S.A.H. 5**

- LEGEND
- CONCRETE PAVEMENT
  - BITUMINOUS PAVEMENT
  - GRAVEL PAVEMENT
  - DRIVEWAY
  - EXISTING RIGHT OF WAY
  - PROPOSED RIGHT OF WAY
  - TEMPORARY EASEMENT



K:\PA\Virginia\Engineering\Projects\CSAH 25\2nd Project Open House Layout.dwg



OLMSTED COUNTY  
PUBLIC WORKS  
2122 CAMPUS DRIVE SE,  
SUITE 200  
ROCHESTER, MN 55904

**C.S.A.H. 25**