

ABC's of Oxbow Park

In the boxes below, you can choose to investigate or find the suggested item, or you can substitute something of your choosing that relates to that letter of the alphabet. We encourage you to not only check off an item or feature that you have identified, but to draw or take a picture along with additional information of what you have found. Use the back side of your sheets for more space.

A Oxbow Park houses many species of native ANIMALS. Draw or photograph the first wild animal you see in the park.

B Oxbow Park is home to many species of BUTTERFLIES! Find one and record it here by drawing or taking a photo!

C How many CAMPSITES does Oxbow Park have?



D Find evidence of white-tail DEER in the park (not zoo). This may include scat, tracks, fur, tree scrapes, and more.

E Bald EAGLES are the national bird and are very common in Oxbow Park. Can you spot one in the park or Zollman Zoo?

F Minnesota has three species of FELINE in the state and they are all found in Zollman Zoo. What are they?



G Find something GREEN!

H There are many bee and hornet species throughout the park which make HIVES. Find a natural OR man-made bee hive.

I Find a creepy, crawly INSECT! How many legs does it have? Does it have wings? What about antennae?



J Spot an animal or insect that JUMPS! Record or draw it here.

K KARST is naturally exposed limestone bedrock with cracks, caves, waterfalls and springs. Oxbow Park has many examples! Can you find one?

L Find three different LEAVES and inspect them. Draw them here and write down what makes them different from each other.



M MUSHROOMS are a type of fungus. Find and example and draw it here.



N What is your favorite feature of Oxbow Park's NATURAL PLAY-SCAPE?

O What type of nut comes from an OAK tree? Draw it here.

P Oxbow Park has many PRAIRIES. Draw or take a photo of the PLANTS you find in a PRAIRIE.



Q Stand still, be QUIET. What do you hear around you?

R Find something RED!

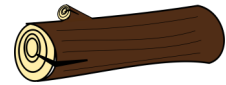
S There are many animals that call Oxbow Park home. Find a SIGN of an animal (tracks, scat, nests, sounds, etc.)



T Oxbow Park has 8 miles of TRAILS. Take a hike and find other things that start with T!



U Lift up a log. What do you find UNDER it?



V Look around you. What features make up the Oxbow VALLEY?

W Zollman Zoo has multiple animal species that start with W. Which is your favorite?!

X Draw or take a photo of something that makes you eXcited!

Y Find something YELLOW!

Z Which Oxbow Park trail runs along the river of which it is named, starting with Z?

