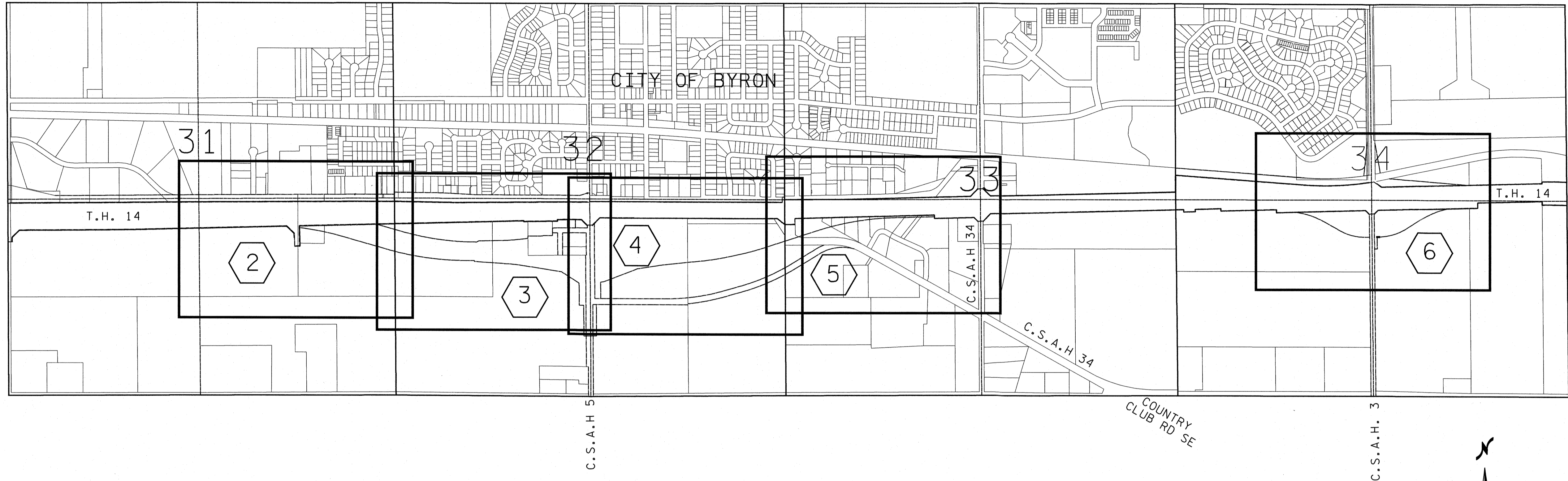


OLMSTED COUNTY OFFICIAL MAP NO. 21

R 16 W
R 15 W



T 107 N
T 106 N

C.S.A.H. 3

PROPOSED RIGHT OF WAY LIMITS FOR ROADWAY IMPROVEMENTS
ACROSS SECTIONS 31, 32, 33 AND 34, TOWNSHIP 107, RANGE 15,
OLMSTED COUNTY, MINNESOTA.

I, DEAN DUSHECK, PROFESSIONAL LAND SURVEYOR, HEREBY CERTIFY
THAT THIS OFFICIAL MAP WAS PREPARED BY ME OR UNDER MY
DIRECT SUPERVISION AND THAT I AM A DULY LICENSED PROFESSIONAL
LAND SURVEYOR UNDER THE LAWS OF THE STATE OF MINNESOTA.
THIS OFFICIAL MAP IS PREPARED IN ACCORDANCE TO AND FOR THE
PURPOSES DESCRIBED IN MINNESOTA STATUTE 394.361.

Dean Dusheck
DEAN DUSHECK
MN LICENSE NO. 16679
DATE 4/10/2023

CITY OF BYRON ORDINANCE NUMBER 20203

RECOMMENDED FOR APPROVAL BY THE CITY OF BYRON
PLANNING AND ZONING COMMISSION.

Chris Fick
CHAIRMAN
DATE 05/02/23

I, Al Roder, CITY CLERK IN AND FOR THE CITY OF
BYRON, MINNESOTA, DO HEREBY CERTIFY THAT ON
THE 11th DAY OF January, 2023 A.D. THIS OFFICIAL
MAP WAS DULY APPROVED BY SAID COMMON COUNCIL
OF THE CITY OF BYRON, IN TESTIMONY WHEREOF I
HAVE HEREONTO SIGNED MY NAME AND AFFIXED THE
SEAL OF THE CITY OF BYRON THIS 11th DAY OF
January, 2023.

Al Roder
CITY CLERK

OLMSTED COUNTY RESOLUTION NUMBER 23-59

COUNTY SURVEYOR

I HEREBY CERTIFY THAT THE CENTER LINE AND ACQUISITION LINES SHOWN ON THIS
OFFICIAL MAP HAVE BEEN CHECKED AND FOUND TO BE ACCURATE IN COMPLIANCE
WITH MINNESOTA STATUTE SECTION 394.361, DATED THIS 19 DAY
OF April, 2023.

Eric C. Stennes
ERIC C. STENNES, OLMSTED COUNTY SURVEYOR

RECOMMENDED FOR APPROVAL BY OLMSTED COUNTY PLANNING
ADVISORY COMMISSION.

Patricia Collins
CHAIRPERSON
DATE 04/17/23

BOARD OF COUNTY COMMISSIONERS CERTIFICATE:

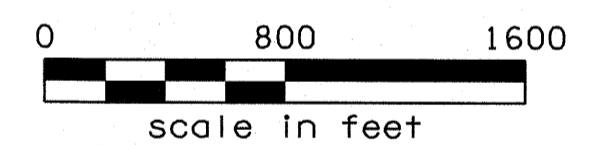
THIS OFFICIAL MAP WAS APPROVED AND ACCEPTED BY THE BOARD OF
COUNTY COMMISSIONERS OF THE COUNTY OF OLMSTED, STATE OF
MINNESOTA, AT A REGULAR MEETING HELD THIS 10 DAY OF
April, 2023, A.D.

Gregory
CHAIRPERSON

DOCUMENT NUMBER A1585807
I HEREBY CERTIFY THAT THIS INSTRUMENT WAS FILED IN THE OFFICE
OF PROPERTY RECORDS AND LICENSING FOR THE RECORD ON
THIS 11th DAY OF May, 2023, 3 O'CLOCK P. M.
AND WAS DULY RECORDED IN THE OLMSTED COUNTY RECORDS.

Mary Blain-Hoelt
DIRECTOR OF PROPERTY RECORDS & LICENSING

Wendy von Wald
DEPUTY



BEARINGS ARE REFERENCED TO THE OLMSTED
COUNTY COORDINATE SYSTEM, NAD83/96 ADJ.

LEGEND

- INDICATES EXISTING RIGHT OF WAY
- INDICATES PROPOSED RIGHT OF WAY
- INDICATES SECTION LINE
- INDICATES QUARTER LINE
- INDICATES SIXTEENTH LINE
- INDICATES PROPERTY LINE
- INDICATES CENTERLINE
- INDICATES EXISTING CONTROLLED ACCESS
- INDICATES PROPOSED CONTROLLED ACCESS
- INDICATES SHEET NO.

1

