

Driver Information for Olmsted
County Recycling Center Plus
(OCRC+)
&
Hazardous Waste Facility
(OCHW)

OLMSTED COUNTY
MINNESOTA

Recycling Center Plus (OCRC+)



Hazardous Waste Facility

305 Energy Parkway NE, Rochester, MN 55906

Note: Information in this presentation is intended for
Class D Solid Waste Hauler License “Junk Haulers.”

Safety Responsibilities

Employer Compliance:

- Your employer must adhere to all relevant OSHA (State and Federal) regulations concerning your occupational safety and health. This includes providing the necessary protective equipment and training to perform your job safely and effectively.

County's Duty to Inform:

- The County is responsible for furnishing your employer with comprehensive information regarding the hazards associated with the County's Solid Waste Facilities. This information enables your employer to properly train and equip you for your tasks.

Sharing Safety Procedures:

- The County is obligated to communicate safety procedures to your employer, ensuring that your employer can adequately brief you on the safety protocols specific to the County's Solid Waste Facilities.

Provision of Safety Equipment:

- The County has supplied essential safety equipment, including gates, long-handled tools, and fall protection attachment points to enhance safety. Using this equipment and any additional equipment your employer provides when required would be best.

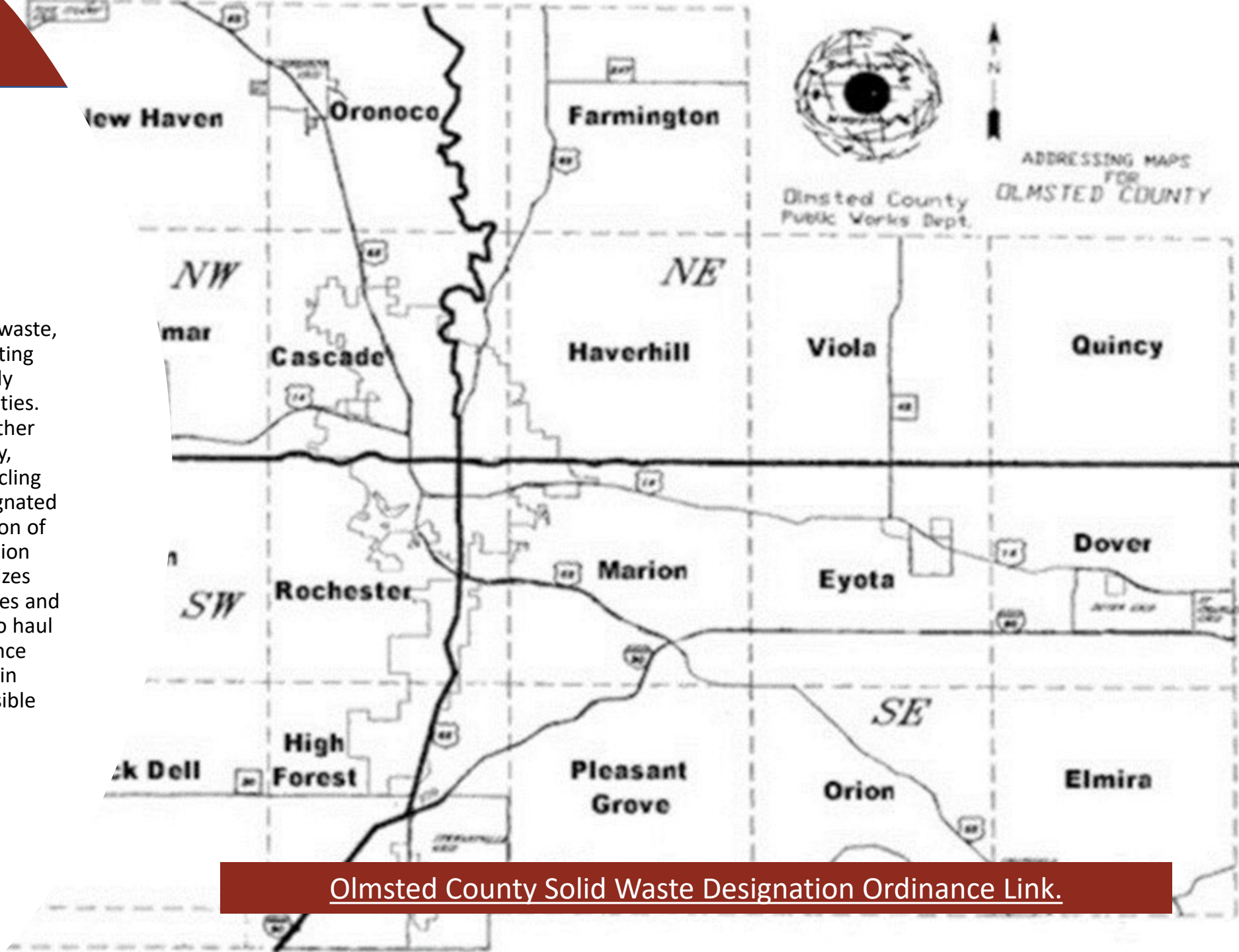
Adherence to Safety Procedures:

- As part of your responsibility, you must diligently follow the safety procedures outlined in this presentation, promoting a safe working environment within the OCRC+ & OCHW.



Designation

Olmsted County mandates that ALL solid waste, commonly referred to as garbage, originating within Olmsted County must be exclusively directed to Olmsted County disposal facilities. Any diversion of such waste to facilities other than the Olmsted Waste-to-Energy Facility, Kalmar Landfill, the Olmsted County Recycling Center, or any other facility officially designated by Olmsted County is considered a violation of the Olmsted County Solid Waste Designation Ordinance. Furthermore, this act jeopardizes your employer of incurring substantial fines and the potential revocation of their license to haul garbage within Olmsted County. Compliance with this directive is imperative to maintain regulatory adherence and ensure responsible waste management practices.



[Olmsted County Solid Waste Designation Ordinance Link.](#)

What the Recycling Center Will Accept

Items Accepted Free of Charge (Pre-Sorted Required):

- Aluminum cans
- Clear glass bottles and jars (no window glass, dishware, or ceramics)
- Colored glass bottles and jars (green, brown, and other colors; no window glass, dishware, or ceramics)
- Corrugated cardboard (clean only, remove packaging materials)
- White office paper
- Newspaper and colored paper
- Plastics #1 and #2 (with a neck)
- Clean plastic #5 dairy containers
- Tin/steel food cans
- Clean scrap iron, aluminum, copper, brass, and stainless steel

Items Commonly Accepted for a Fee (Household Quantities):

- Appliances (recycled)
- Bikes
- Brush/tree waste (incidental quantities)
- Carpeting
- Computer systems (recycled)
- Construction and demolition materials (household quantities)
- Drywall
- Furniture
- Garbage (household quantities)
- Gas Grills
- Lawnmowers (must be empty of fluids)
- Mattresses (8 or fewer per day)
- E-waste (recycled)
- Tires (automotive, eight (8) or fewer per day)



Click Waste Wizard to Learn More About What is Accepted

Hours of Operation at OCRC+

Tuesday - Saturday, 8:00 a.m. - 4:30 p.m.



Recycling Center (OCRC+) Procedures



Illustration One

The information presented here, illustrated as "Illustration One," is an example of how the disposal procedure may function at OCRC+ . Its operation is contingent upon factors such as traffic flow and the facility's usage by the general public on any given day. We acknowledge the importance of expeditious unloading for our Class D Haulers. Moreover, we recognize the necessity of introducing a dedicated Mixed Municipal Solid Waste (MMSW) container, as depicted in "Illustration Two," to prevent delays caused by the general public's unloading activities.



Illustration Two

It's essential to emphasize that the sole **non-negotiable** aspect of this procedure is that all MMSW loads must be weighed upon entry and exit through the Scale House. Scale House procedures will be outlined in the following slides.



OLMSTED COUNTY
MINNESOTA

Procedures for Weighing
Class D Solid Waste Haulers,
Also Known as "Junk Haulers"



How to Weigh at the Scale House

When you reach the Inbound gate, approach it and wait for it to fully open before moving forward. Ensure the scale registers at **zero (0)** before driving onto it cautiously. While advancing, be aware that the traffic light will stay **red**. Pay close attention to keeping your vehicle's tires on the scale. Once the OWEF scale operator has weighed your vehicle and **opened** your ticket, the light turns **green**. You can then proceed to the designated unloading area in the OCRC+. The same procedure is followed during the Outbound process, where you handle payment for your load. The scale operator will **close** your ticket and provide you with a copy.



Follow Signals & Staff Instructions

All drivers are required to follow instructions provided by Olmsted County staff, including guidance for selecting the correct disposal area for unloading materials. Additionally, drivers must observe posted signs as part of their responsibilities.

Of paramount importance, haulers must strictly adhere to the posted speed limits for the roadways and follow directional signs in and around OCRC+, OCHW and OWEF. This commitment to following instructions and guidance is vital to maintaining the safe and efficient operation of the facility.



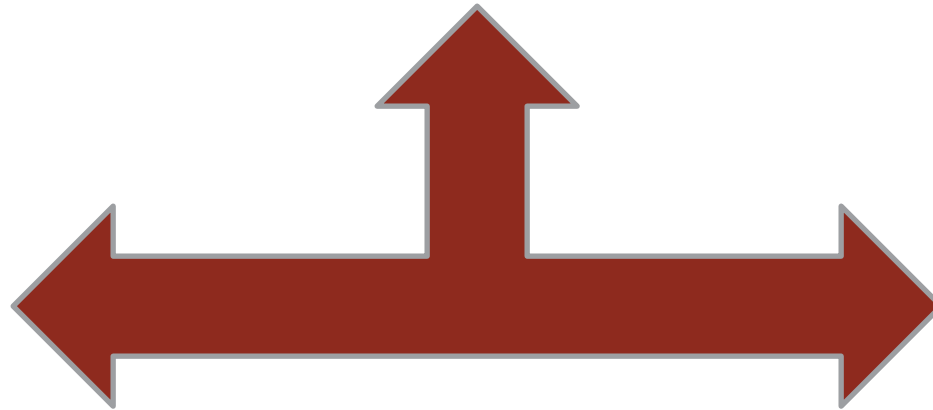
Additional Signage Installed

For your safety and the safety of others, please follow all traffic patterns and posted signs around the facility!



No Cell Phone Use OCRC+ and OWEF Premises

The use of cell phones is prohibited on the OCRC+, OCHW, and OWEF premises.



Smoking



OLMSTED COUNTY
MINNESOTA



No smoking or open flames on
OCRC+, OCHW, and OWEF premises.

Hot Loads

Hot Load Prohibition:

Strict Hot Load Policy:

Our facilities have a strict policy, and **we do not accept hot loads under any circumstances.**

Fire Prevention Measures:

Preventing Fire Hazards:

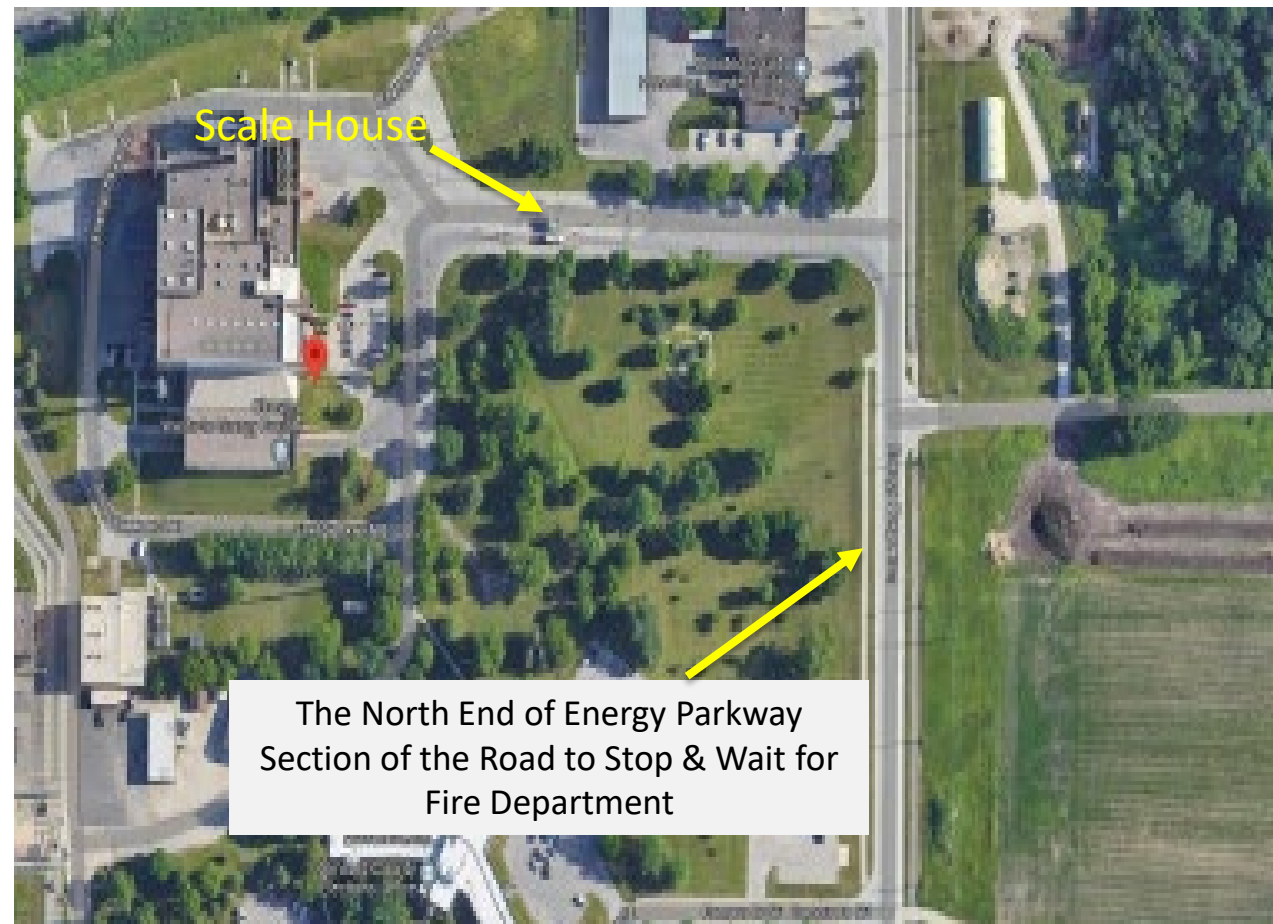
To ensure fire safety, it is imperative that you **do not attempt to drive a burning load into our facilities.**

Emergency Procedure for a Burning Load:

Immediate Action Required:

If you detect a burning load while at the OCRC+, OCHW or OWEF, please follow these immediate steps:

- Proceed **without delay** to the **north end of Energy Parkway.**
- **Dial 911** to report the fire.
- Follow your company's established policies and training protocols until the Fire Department arrives.
- Prioritize personal safety by distancing yourself from the fire hazard.
- As appropriate, Notify the County, OWEF operations, or the scale operator.
- Your safety and the safety of everyone involved are of utmost importance to us, and we appreciate your cooperation in adhering to these guidelines.



No Scavenging

Haulers are strictly prohibited from scavenging through material deposited at OCRC+ and OCHW. It's essential to understand that all materials dumped automatically become the property of Olmsted County.

NOTICE
NO
SCAVENGING

Personal Protective Equipment (PPE)



Safety Attire:

In the interest of safety, all individuals entering the OCRC+ area must wear, at a minimum, the following protective gear:

Sturdy Footwear: Sturdy footwear refers to shoes or boots known for their durability. They are typically constructed with robust materials such as thick leather or reinforced rubber. Sturdy footwear often includes features like reinforced toe caps and non-slip soles. These shoes are commonly worn in situations requiring protection and resilience, such as in industrial or outdoor settings, where individuals rely on rigid, dependable footwear to ensure safety and comfort.

Optional Safe Attire:

Safety Glasses

Reflective Clothing or Vest



Drugs, Alcohol, and Firearms

Olmsted County strictly prohibits the presence of alcohol, illegal substances, or firearms on county property. If a driver or assistant is suspected of being under the influence of drugs or alcohol, their respective company will be promptly contacted for necessary action.



Dumping in the Wrong Place



Loads under no circumstances should be deposited in an area not designated for dumping unless an OCRC+ and OCHW staff member provides explicit instructions for you to do so.

Unacceptable Waste

The following waste materials are strictly prohibited and categorized as 'Unacceptable Waste' at the OCRC+ facility:

<ul style="list-style-type: none">• Hazardous Waste	<ul style="list-style-type: none">• Pesticides, insecticides, chemicals, or other toxic materials	<ul style="list-style-type: none">• Animal Remains
<ul style="list-style-type: none">• Radioactive waste	<ul style="list-style-type: none">• Fluorescent tubes or high-intensity discharge lamps	<ul style="list-style-type: none">• Tanks and pressure vessels
<ul style="list-style-type: none">• Aerosol cans	<ul style="list-style-type: none">• Liquid wastes of any kind in large quantities	<ul style="list-style-type: none">• Motor vehicle fluids and filters
<ul style="list-style-type: none">• Asbestos products	<ul style="list-style-type: none">• Paint, solvents, gasoline, and flammable liquids	<ul style="list-style-type: none">• Automotive, rechargeable, and button batteries



***This list is incomplete, so it's advisable to consult the Waste Wizard for comprehensive information.**



Hazardous Waste Facility (OCHW)

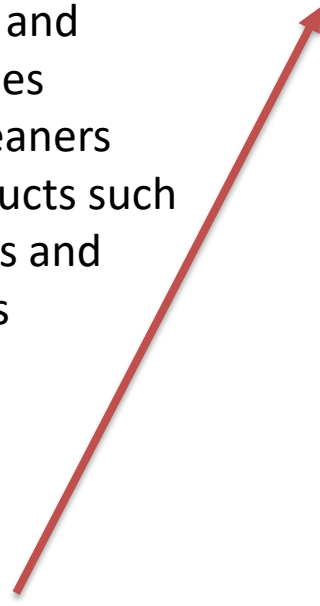
The following hazardous waste materials must be disposed of at the OCHW facility:

- Aerosols
- Automotive, rechargeable, and button batteries
- Household cleaners
- Mercury products such as thermostats and thermometers
- Pesticides
- Paints
- Sharps
- Solvents
- Special waste
- Stains
- Varnishes
- Used Antifreeze

Special Hazardous Waste

Disposal of special wastes is also free or on a fee-for-service basis for businesses and residents. Some of the items accepted under this program include:

- Agricultural Pesticides (free up to 300 lbs.)
- Antifreeze
- Asbestos Containing Materials
- Automotive Batteries (free)
- Button Batteries (free)
- Cell Phones (free)
- Filters (oil, gas, transmission)
- Fluorescent Tubes
- Lead Paint Chips
- Lithium, Mercury, Silver Oxide Batteries (free)
- Metallic Mercury
- PCB Ballasts/Capacitors
- Propane Tanks
- Rechargeable Batteries (free)



Thank you for taking the time to review this vital information, and please be safe.

