

About the Project

Reconstruction and Realignment of about 3 miles of County State Aid Highway (CSAH) 1 from CSAH 16 in Simpson to the roundabout at CSAH 47.

The two primary project goals include:

- 1) Address poor pavement condition.
- 2) Fix three substandard horizontal curves to reduce crash risk, improve driver comfort, and reduce unnecessary traffic delays.

Additional project aspects include:

- Right Turn Lanes at all public roads
- Left Turn Lanes at County Rd (CR) 111 (55th St SE) and CSAH 16
- Upgrading substandard shoulders
- Drainage infrastructure improvements

PLANNED IMPROVEMENTS



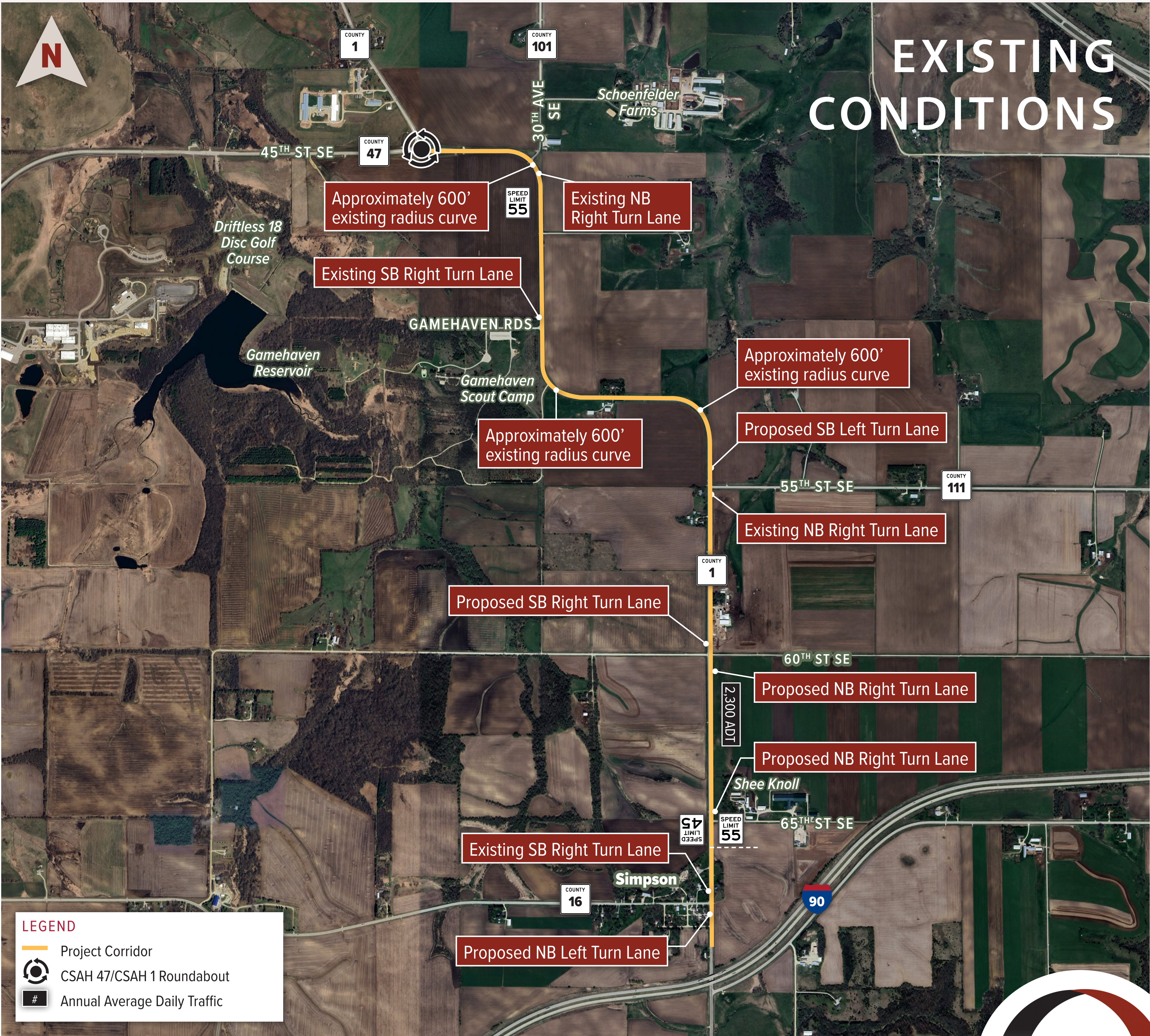
Shoulder and turn lane improvements



Drainage infrastructure improvements



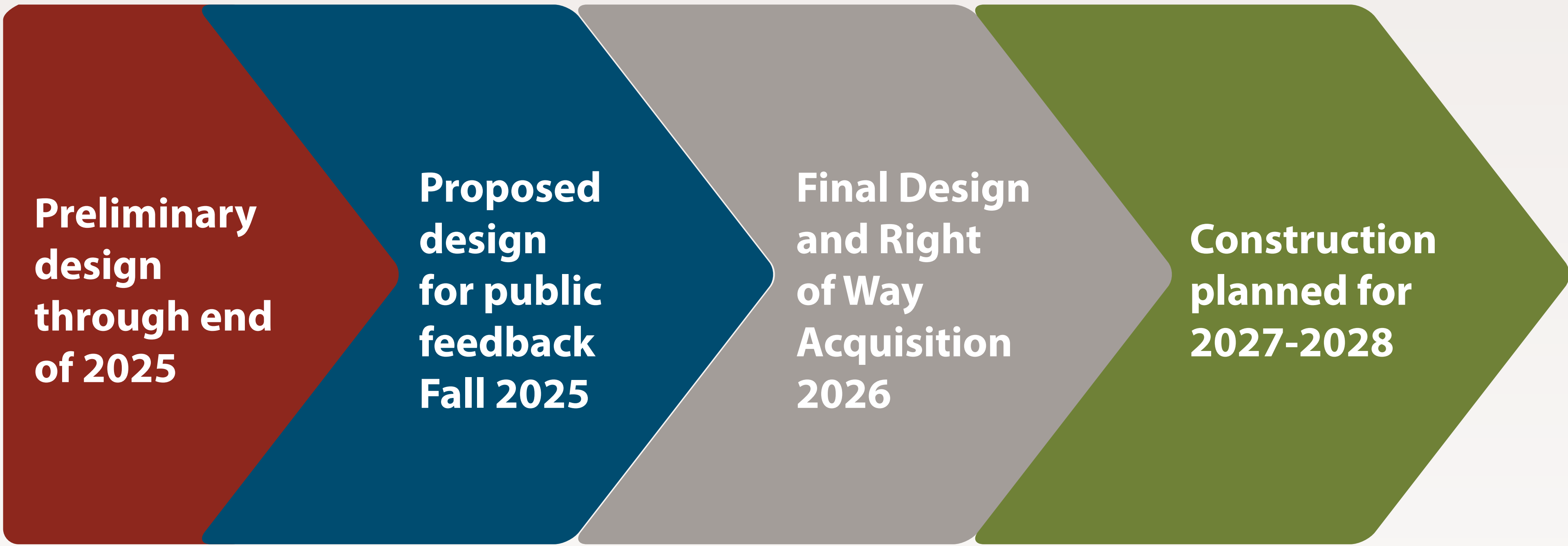
Curve safety improvements



Design Assumptions and Next Steps

SCHEDULE

Construction is expected to begin in 2027, which presents an immediate need for a preliminary engineering and public outreach effort to build consensus around a future vision for the corridor and ensure compatibility with other planned resources.



NEXT STEPS

- The project team will work your feedback in to the technical analysis to understand if any issues were missed and what types of improvements you would like to see
- A second open house is scheduled to occur in Fall/Winter of 2025 to review the proposed layout



Concept A

SOUTH LEG OF ROUNDABOUT REALIGNMENT



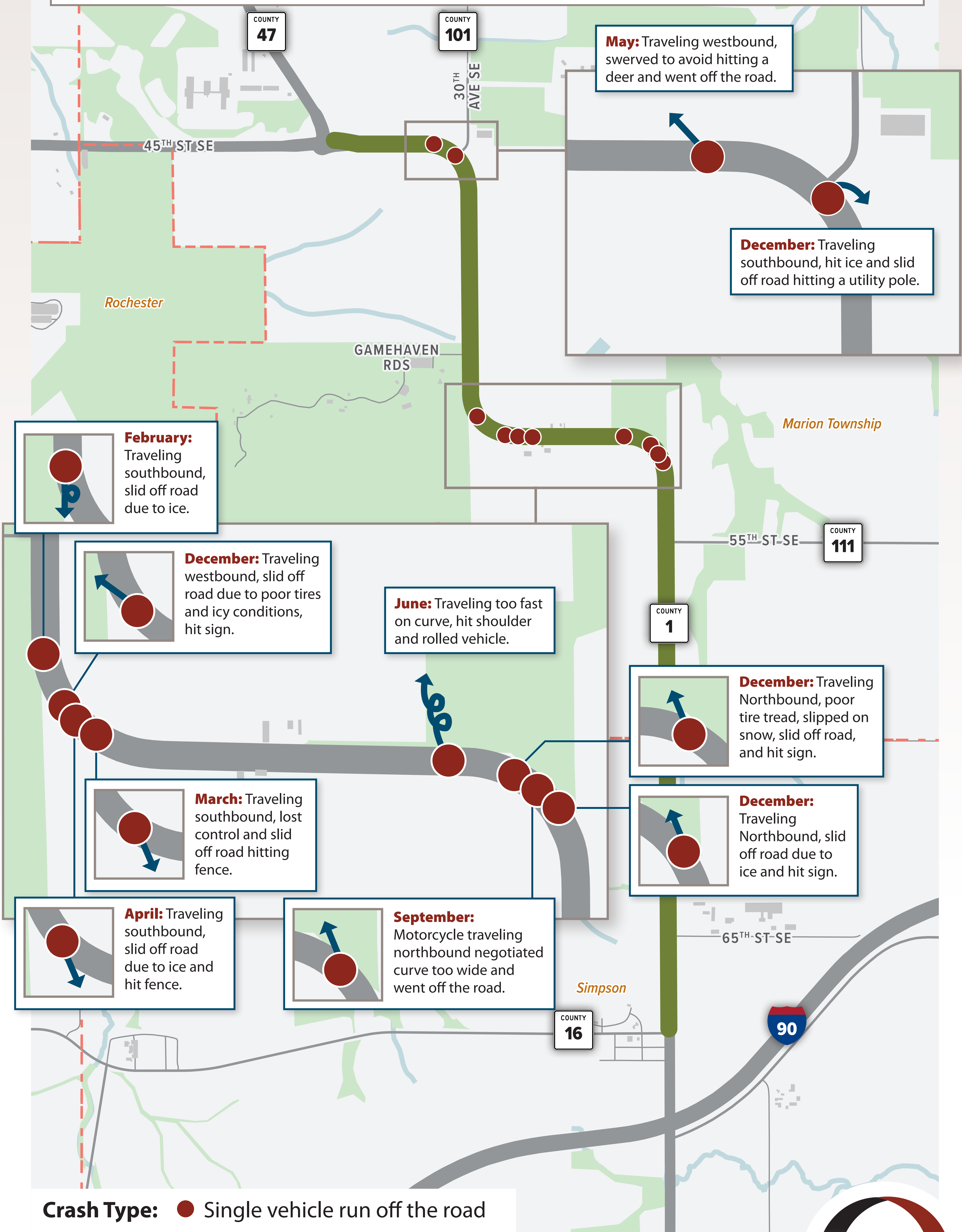
Concept B

EAST LEG OF ROUNDABOUT REALIGNMENT



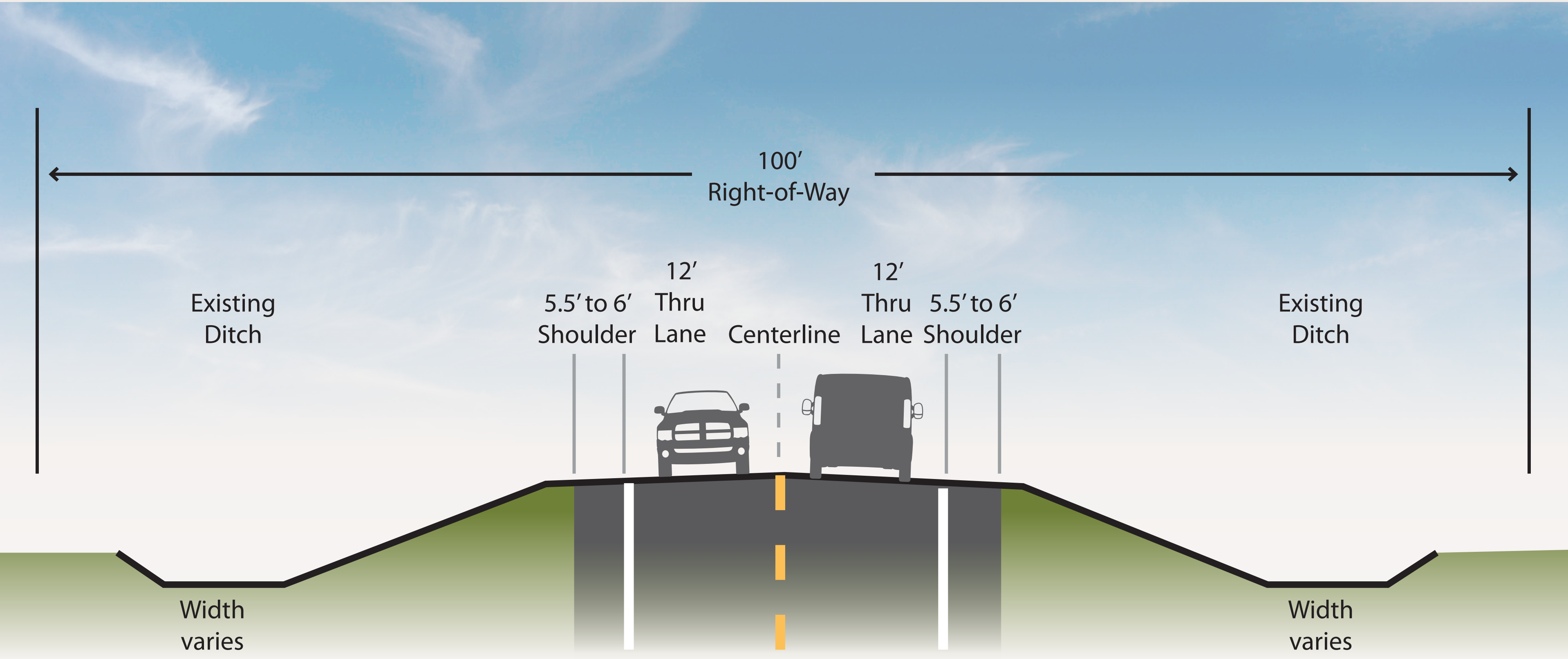
Crash Data Summary

From 2020 through present (5-years) there have been a total of 10 reported crashes along project area. All ten crashes were single vehicle run off road - one type A serious injury crash, one type C possible injury and eight property damage only crashes. All crashes are located in proximity to sub-standard horizontal curves. These statistics do not account for instances where vehicles ran off the road and continued without reporting their incident.

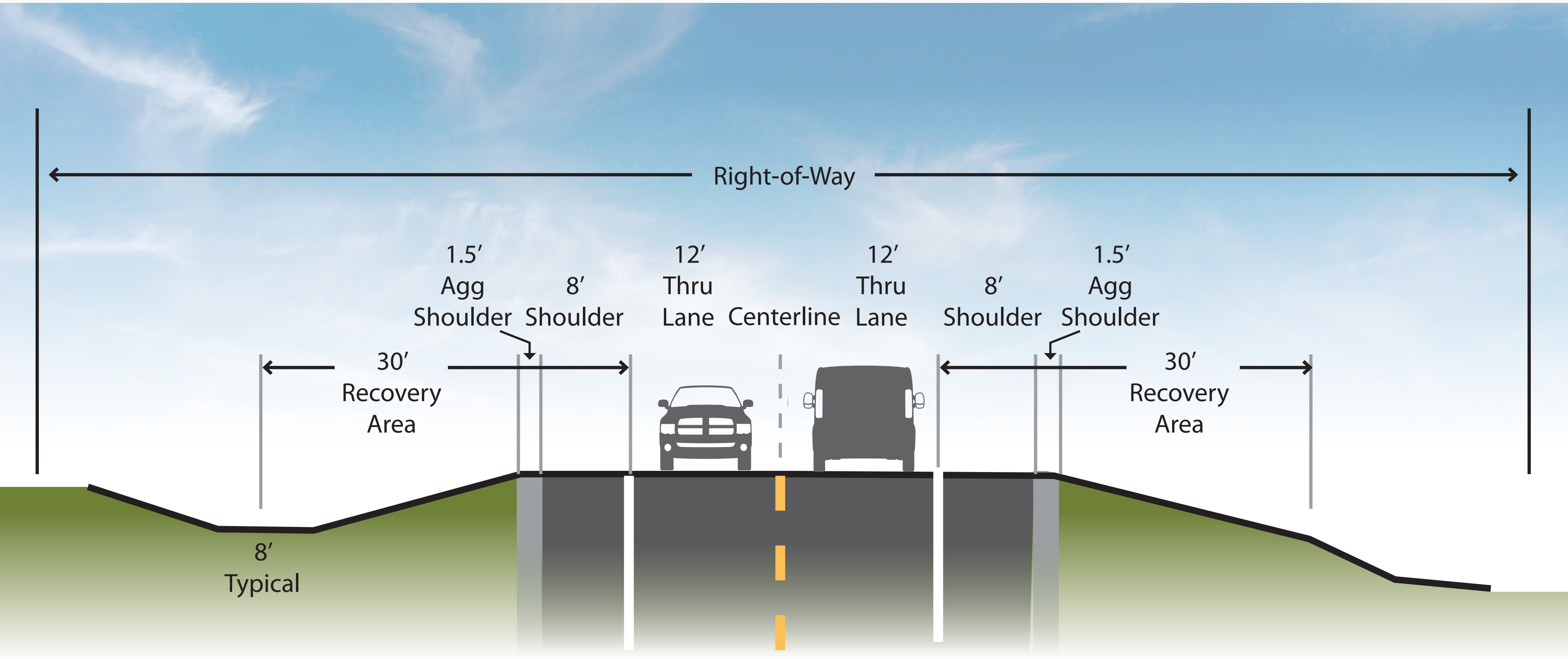


Existing/ Proposed Conditions

EXISTING CONDITIONS – TYPICAL



PROPOSED CONDITIONS



We want to hear from you!



How often do you drive through the project area?

1-2 times a day
Several times a day
Weekly
Monthly
Rarely
Never



Where are you traveling when you go through the project area?

Home
Work
School
Shopping or running errands
Medical appointments
Visiting family or friends
Recreational activities (parks, gyms, etc.)
Religious services or community events
Just passing through
Other



Anything else you want to share with the project team?
Grab a post-it and let us know!

