

CSAH 1 (CSAH 47 to CSAH 16) Reconstruction Project

About the Project

Reconstruction and Realignment of about 3 miles of County State Aid Highway (CSAH) 1 from CSAH 16 in Simpson to the roundabout at CSAH 47.

The two primary project goals include:

- 1) Address poor pavement condition.
- 2) Fix three substandard horizontal curves to reduce crash risk, improve driver comfort, and reduce unnecessary traffic delays.

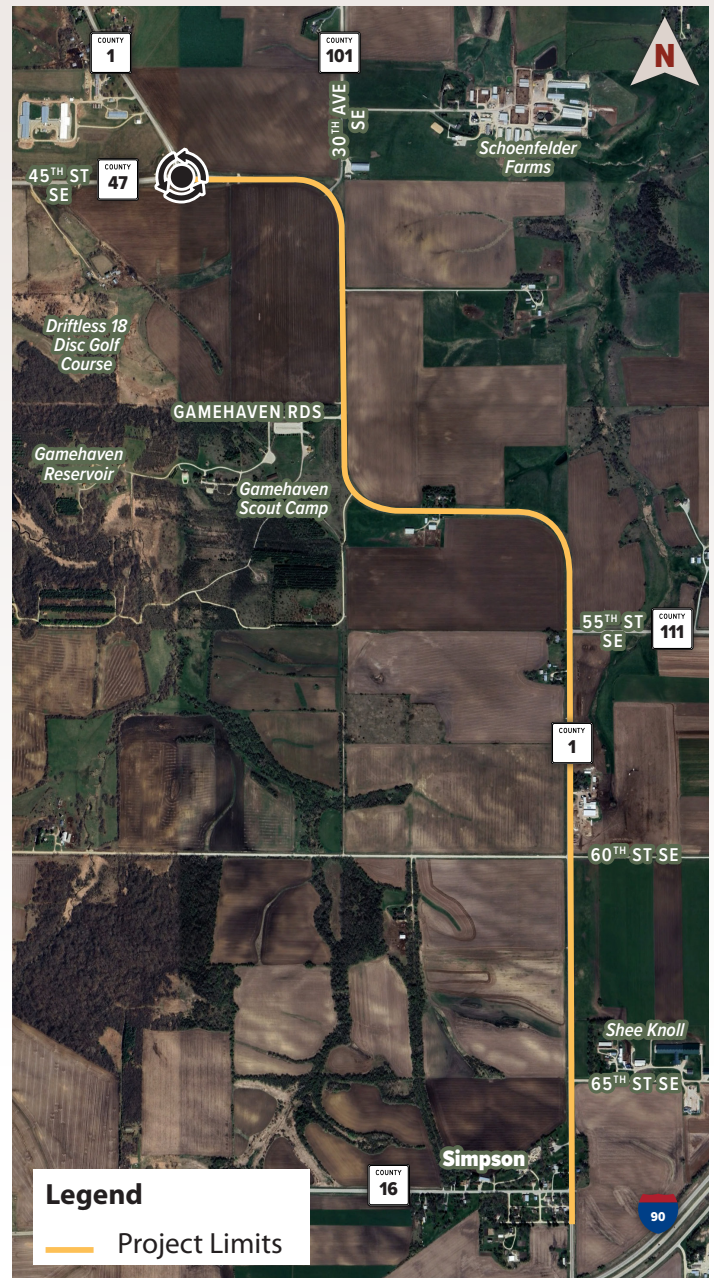
Additional project aspects include:

- Right Turn Lanes at all public roads
- Left Turn Lanes at CSAH 111 (55th St SE) and CSAH 16
- Upgrading substandard shoulders
- Drainage infrastructure improvements

SCHEDULE

Construction is expected to begin in 2027, which presents an immediate need for a preliminary engineering and public outreach effort to build consensus around a future vision for the corridor and ensure compatibility with other planned resources.

Preliminary design through end of 2025 **Proposed design for public feedback Fall 2025** **Final Design and Right of Way Acquisition 2026** **Construction planned for 2027-2028**



FOR ADDITIONAL INFORMATION

Project Contact

Nathan Arnold
Assistant County Engineer

507-328-7060

nathan.arnold@olmstedcounty.gov



Project Website

<https://www.olmstedcounty.gov/residents/roads-transportation/design-projects/csa-1-csa-47-csa-16-reconstruction-project>

