



Olmsted County Budget in Brief 2026

Overview

Every year, Olmsted County releases its Budget in Brief to offer a snapshot of the work we do, the services we provide, and the goals we're pursuing for the year ahead. While it doesn't capture every detail or break down every dollar, it's designed to give you a quick, easy-to-understand overview of how we're investing in our community.

The 2026 Budget in Brief highlights where our funding comes from, how it's allocated across divisions, and real examples of how your tax dollars support programs and services that make life better for residents. It's a concise look at our priorities—and a preview of where we're headed as we continue working to meet the needs of Olmsted County.





Democracy in action

In 2026, Olmsted County Elections will administer both the state primary and the state General Election. These elections will feature contests at every level of government, including Minnesota's governor and lieutenant governor, secretary of state, auditor, attorney general, state representatives, and state senators. County offices such as commissioners, sheriff, county attorney, and Soil and Water Conservation District supervisors will also be on the ballot, along with local races for mayor, city councils, and school boards.

Carrying out elections of this scale is one of the county's most important responsibilities. Levy funding provides the staff, technology, and resources needed to ensure a secure, transparent, and accessible process. This investment helps give residents confidence that their voices are heard and that they can fully participate in shaping the leadership at every level of government.



Child and Family Services building stronger connections in 2026

In 2026, Child and Family Services will continue its commitment to meaningful engagement—centered on listening, learning, and partnering with families and communities. Building on past work, the department is planning new efforts to strengthen relationships and improve outcomes.

Key priorities include:

Expanding community voice: Creating more ways for families to share input and help shape services, including open house opportunities and point-in-time service participant surveys. These efforts ensure the voices of those served are heard and reflected in service.

Strengthening partnerships: Deepening collaboration with schools, healthcare providers, and community organizations through initiatives like the Every Child and Family Thrives Initiative, which brings together cross-sector partners to support holistic well-being for children and families.

Investing in staff engagement: Supporting staff through consistent consultation, relevant professional development opportunities, and a weekly department-wide celebration of success and accomplishments. These strategies help ensure staff feel heard, valued, and equipped to succeed.

These efforts reflect an ongoing focus on trust, equity, and collaboration—laying the foundation for stronger outcomes and deeper connections in the year ahead.



Parks and trails incorporating feedback for future development

In 2025, Olmsted County Parks and Trails asked people to share their thoughts about local parks. They held a survey and open house events so residents could ask questions, give ideas, and learn about future plans. The county is using this feedback to update its parks master plans, which will help improve park features, nature areas, and the overall visitor experience. The final plans should be ready in early 2026.

Next, the county will focus on its trail system. In 2026, a new master plan for trails will be developed, and community input will again play a big role in this process. People will have opportunities to share what they want for future trails, like better access and connections. Through these community engagement efforts, the county will build a master trails plan that addresses resident needs and desires.



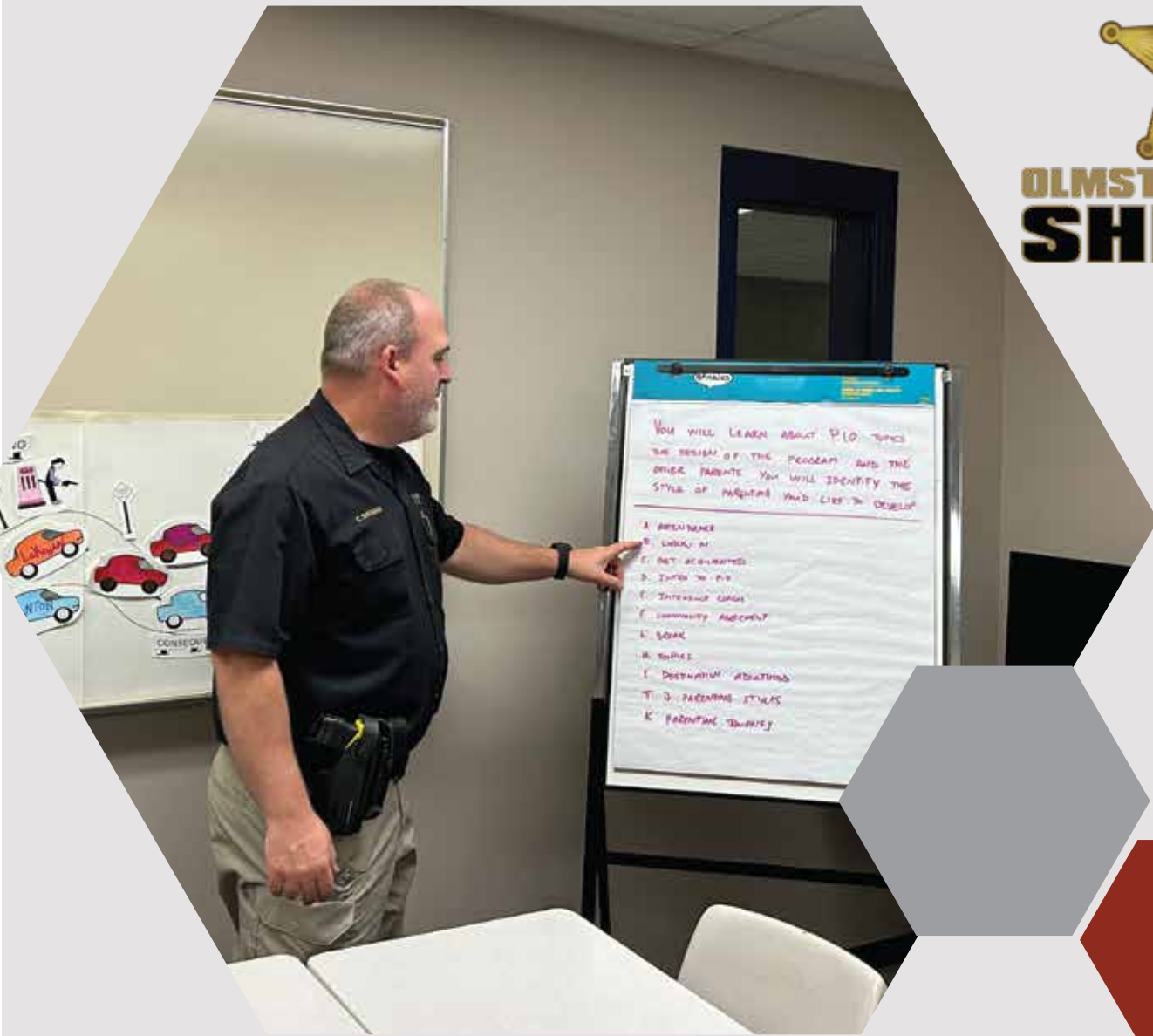
Protecting private well water to reduce nitrates

Olmsted Soil and Water Conservation District and Olmsted County Public Health Services are working together to help private well users stay safe from nitrate contamination. Through the TAP-IN Safe Drinking Water Program, families in Southeast Minnesota can get free water testing and, if needed, help paying for a water treatment system.

The program is funded by the State of Minnesota and Clean Water, Land and Legacy Amendment dollars. In 2025, the team tested more wells, helped people understand their results, and held community clinics. In 2026, they plan to keep this work going with more education, outreach in high-risk areas, and support for families—especially those with babies or financial need.



**OLMSTED COUNTY
SHERIFF**



Programming returns to Adult Detention Center in 2026

In 2026, Olmsted County is adding a Program Sergeant at the Adult Detention Center (ADC)—a key investment in helping people in our jail build better futures. The ADC is not just a place where people are held; it's also a place where they can learn new skills, prepare for jobs, and get support to make positive changes. The Program Sergeant will lead these efforts, helping people get ready to return to the community and live stable, law-abiding lives.

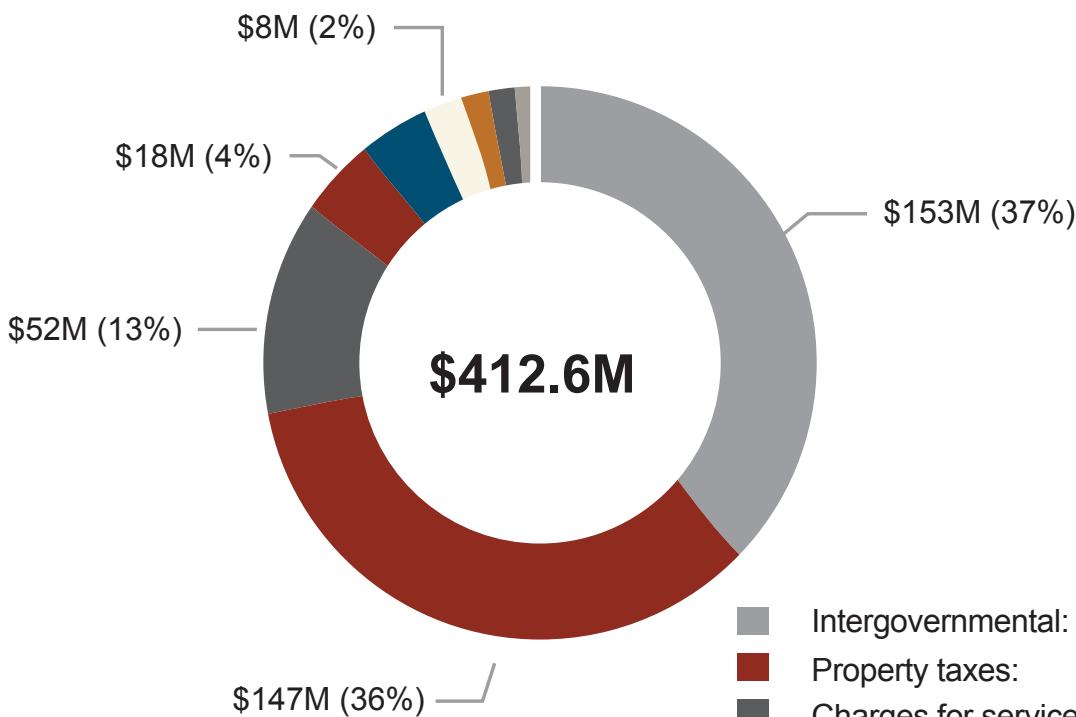
This position restores important programming. Without a Program Sergeant, the ADC hasn't had enough staff to offer the kinds of programs that help people stay out of jail after they're released. By funding this role, we're investing in safer neighborhoods, stronger families, and a healthier community—making sure people leave the ADC with more tools to succeed than when they arrived.

Where the dollars come from

County + HRA

Olmsted County plays a key role in delivering public services. In order to deliver these services effectively, the county receives funding from several sources. The chart below shows the amount of revenue received by each source. Property taxes are the largest source of revenue, but still comprise less than 40% of all revenue.

Revenues and other funding sources



Intergovernmental:	\$152,915,870	37.0%
Property taxes:	\$147,282,183	35.7%
Charges for services:	\$52,076,001	12.6%
Transportation taxes:	\$18,415,000	4.4%
Other financing sources:	\$16,597,710	4.0%
Miscellaneous:	\$8,102,410	2.0%
Interest:	\$7,413,425	1.8%
Transfers in:	\$6,155,511	1.5%
Wheelage taxes:	\$2,800,000	0.7%
Licenses & permits:	\$2,297,000	0.6%
Gifts:	\$328,000	0.1%
Fines:	\$22,000	0.0%
Reserves:	(\$1,759,785)	-0.4%

Total: \$ 412,645,825 100%

Property taxes

Property taxes (also known as levy) provide 35.6% of county revenue
 Below is the total combined taxes based on Olmsted County's total population.

COUNTY + HOUSING AND REDEVELOPMENT AUTHORITY COMBINED PROPERTY TAXES

	2025 combined levies	+ 2026 recommended increases	=	2026 recommended combined levies	Percent change
County -	\$132,690,673	+ \$9,022,966	=	\$141,713,639	6.80%
HRA -	\$5,172,068	+ \$396,476	=	\$5,568,544	7.67%
Total -	\$137,862,741	+ \$9,416,614	=	\$147,279,355	6.83%

Allocation of county property tax dollars

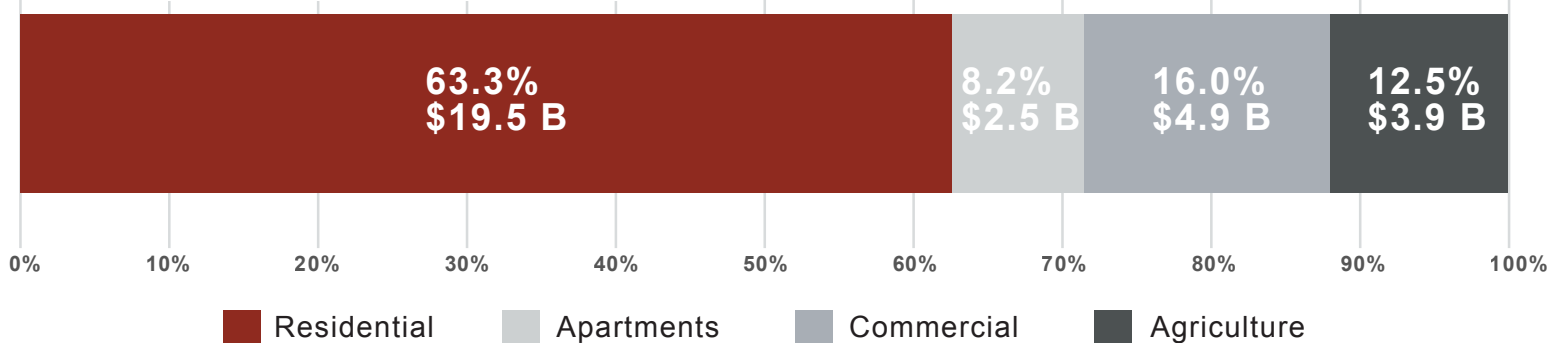
The amount of property tax assessed is based on the estimated market value of residential, commercial, and agricultural parcels per rates established by the Minnesota legislature. In Olmsted County, the total allocation of property taxes paid by residential properties is less than the allocated estimated market value while the opposite is true for commercial properties.

County + HRA Property Taxes = \$147.2 Million



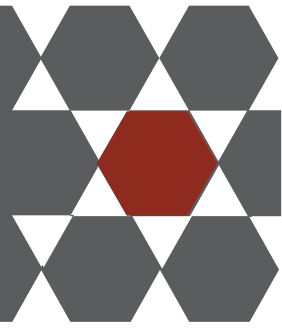
Residential and apartments represent about 72% of market value and pay about 64% or \$93.6M of County + HRA property taxes.

Estimated Market Value = \$30.8 Billion



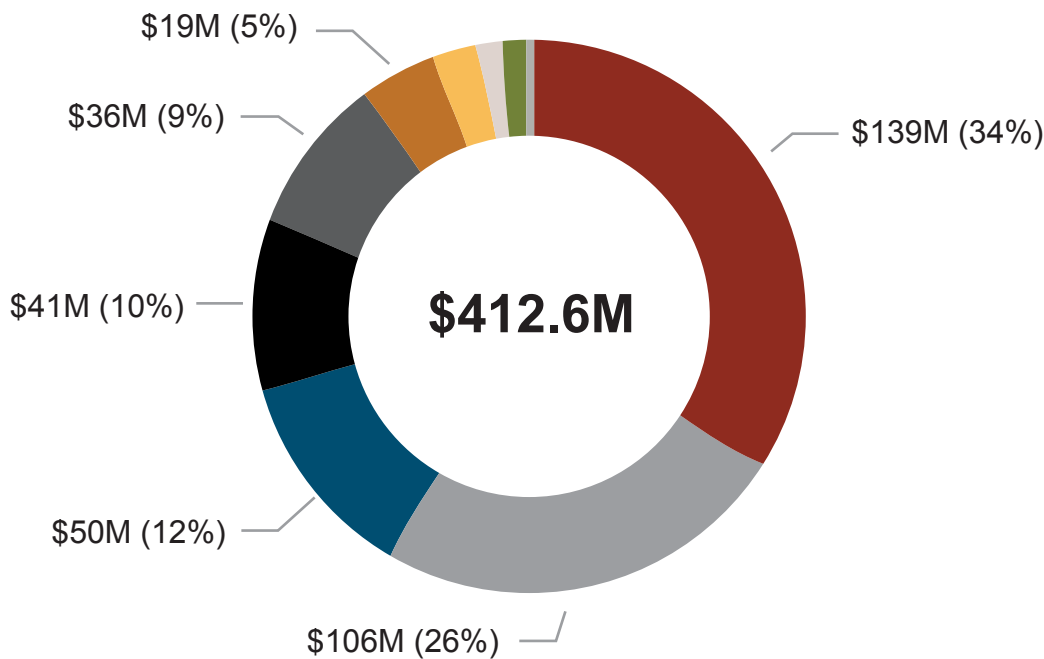
Residential
 Apartments
 Commercial
 Agriculture

Where the dollars go



County + HRA

Expenses and other funding

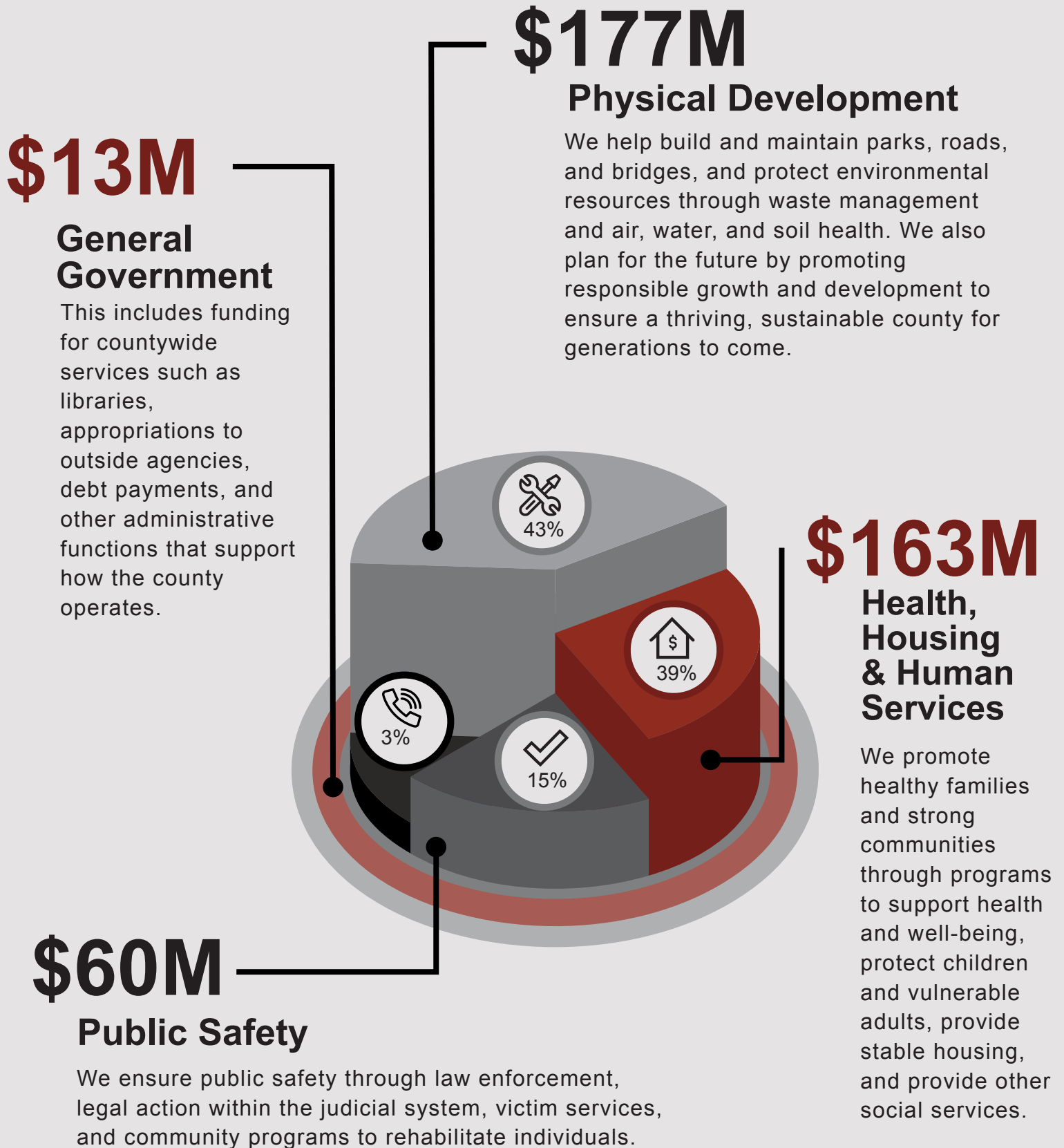


Salaries & benefits:	\$139,110,918	33.7%
Capital outlay:	\$105,755,380	25.6%
Interdepartmental:	\$49,610,148	12.0%
Payments for clients:	\$41,124,841	10.0%
Other services & charges:	\$35,750,128	8.7%
Debt service:	\$19,000,024	4.6%
Supplies:	\$8,861,980	2.2%
Miscellaneous:	\$6,785,393	1.6%
Transfers out:	\$6,197,013	1.5%
Contingency:	\$450,000	0.1%

Total: \$ 412,645,825 100%

Expenses by division

Olmsted County, like many other counties, budgets expenses by function



*Costs for Administrative Services (Information Technology; Human Resources; Finance; and Policy, Analysis and Communications) are built into each division budget rather than shown here separately.



For more information about
Olmsted County's 2026 budget,
visit www.olmstedcounty.gov/budget

If you would like to request a translated version of the 2026
Budget in Brief or would like this information in a different format,
please contact: communications@olmstedcounty.gov

CONTACT US:

OLMSTED COUNTY

151 4th Street SE
Rochester, MN 55904-3710
1-507-328-6000

olmstedcounty.gov

FOLLOW US!

